



جمهوری اسلامی افغانستان د افغانستان اسلامي جمهوریت  
وزارت زراعت و مواد غذایی د کرنی او خوراکي موادو وزارت



## نشریه قیمت های امتعه زراعتی

(سال دوم : شماره ۷)

## Agricultural Commodity Price Bulletin

(Year 2 : Volume 7)



**Year 2: Volume 7**

# **Agricultural Commodity Price Bulletin**

**Ministry of Agriculture and Food  
Policy and Planning Department  
Marketing, Economics and Statistics Division  
(FAAHM)  
Kabul, 18 July 2006**

## Abbreviations

DAP	Diammonium Phosphate
FAAHM	Food, Agriculture and Animal Husbandry Information Management Unit
FAO	Food and Agriculture Organization of the United Nations
MAF	Ministry of Agriculture and Food
WFP	World Food Program

### Contact us

Comments on this bulletin are most welcome. Contact us at:

Haqiqatpal Ghulam Rabbani, Director, FAAHM, MAF  
[GhulamRabbani.haqiqatpal@fao.org](mailto:GhulamRabbani.haqiqatpal@fao.org)

Mobile: +93-(0)70-284879



The FAO project “Support to FAAHM in the MAF” (GCP/AFG/034/GER) provided technical guidance and financial support for the publication of this bulletin. The project is funded by the Government of Germany.

This and earlier issues of the FAAHM price bulletin are available at:  
[www.agriculture.gov.af](http://www.agriculture.gov.af)

# Contents

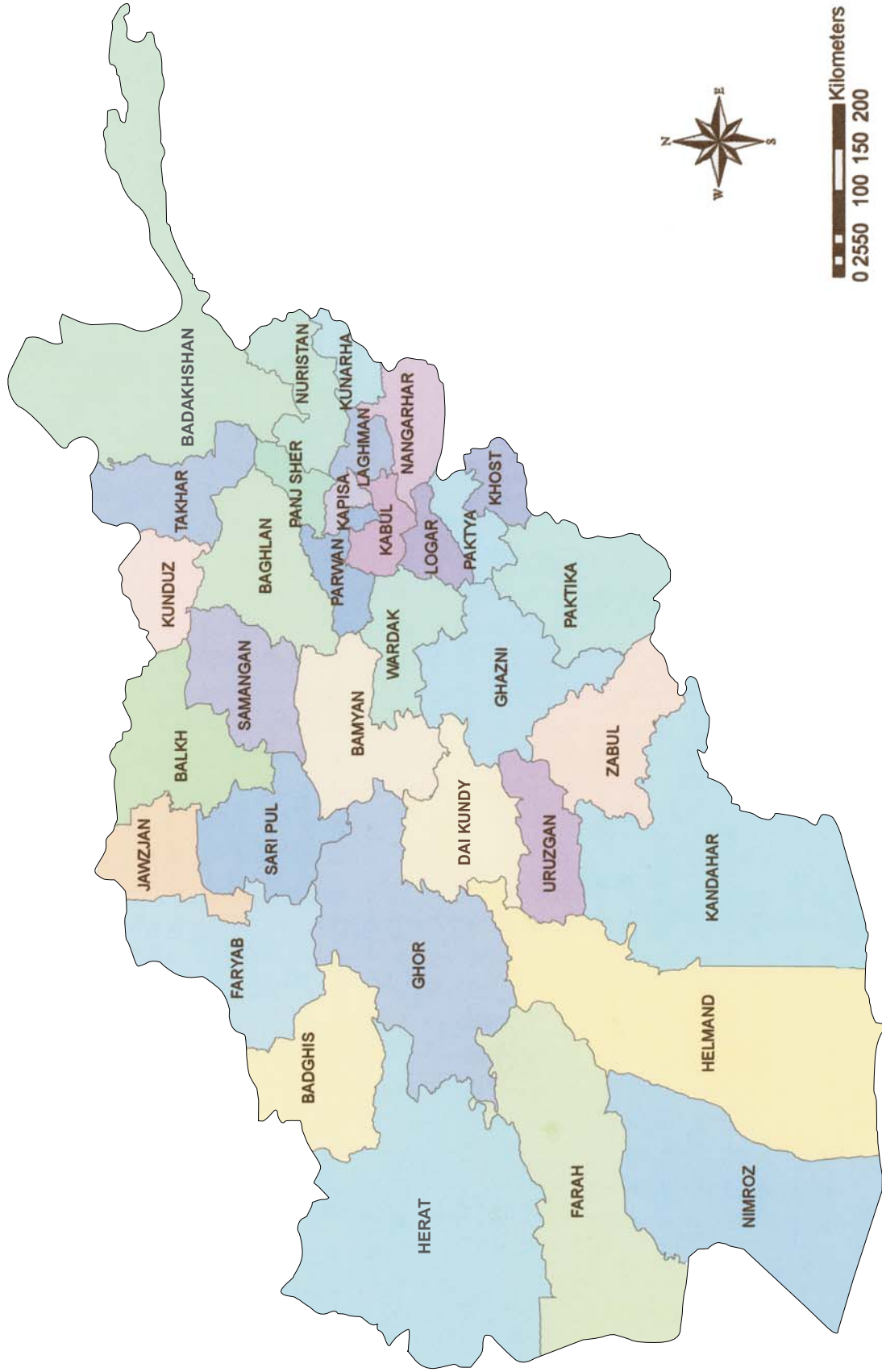
*Map: Afghanistan with provincial boundary*

1. CONSUMER PRICE INDEX	1
2. PRICE OF AGRICULTURAL COMMODITIES	4
2.1. WHEAT PRICE	4
2.2. LIVESTOCK AND LIVESTOCK PRODUCTS PRICES	5
2.3. LABOR COSTS	9
2.4. FERTILIZER PRICES	10

## *Annexes*

- I. Consumer Price Indexes (CPI) - national level and six locations, June 2005 to June 2006 (Source: Central Statistics Office)*
- II. National Consumer Price Index (CPI) by items, June 2005 to June 2006 (Source: CSO)*
- III. Kabul Consumer Price Index (CPI), June 2005 to June 2006 (Source: CSO)*
- IV. Monthly prices of 32 commodities in 34 locations for June 2006 (Source: FAAHM)*
- V. Weekly prices of 6 commodities in eight locations, January to mid-July 2006 (Source: World Food Program, Kabul)*

# MAP OF AFGHANISTAN



**Ministry of Agriculture and Food (MAF)**  
**Policy and Planning Department**  
**Marketing, Economics and Statistics Division (FAAHM)**  
**Agricultural Commodity Price Bulletin**  
**(Year 2: Volume 7)**

**1. Consumer Price Index**

National Consumer Price Index<sup>1</sup> (CPI) in June 2006 was higher by 6.4 percent points compared to June 2005<sup>2</sup>. The annual increases in the national food index and the non-food index in the said period were 4.7 and 9.1 percent points respectively. The exchange-rate did not distort these indexes; the exchange-rate index rose only by 2 percent-points in the period.

From May to June 2006, CPI decreased by 0.6 percent point, with 0.3 percent point decrease in the food items and 1.1 percent point decrease in the case of non-food. The exchange-rate increased by about 3.5 percent point in that one-month period.

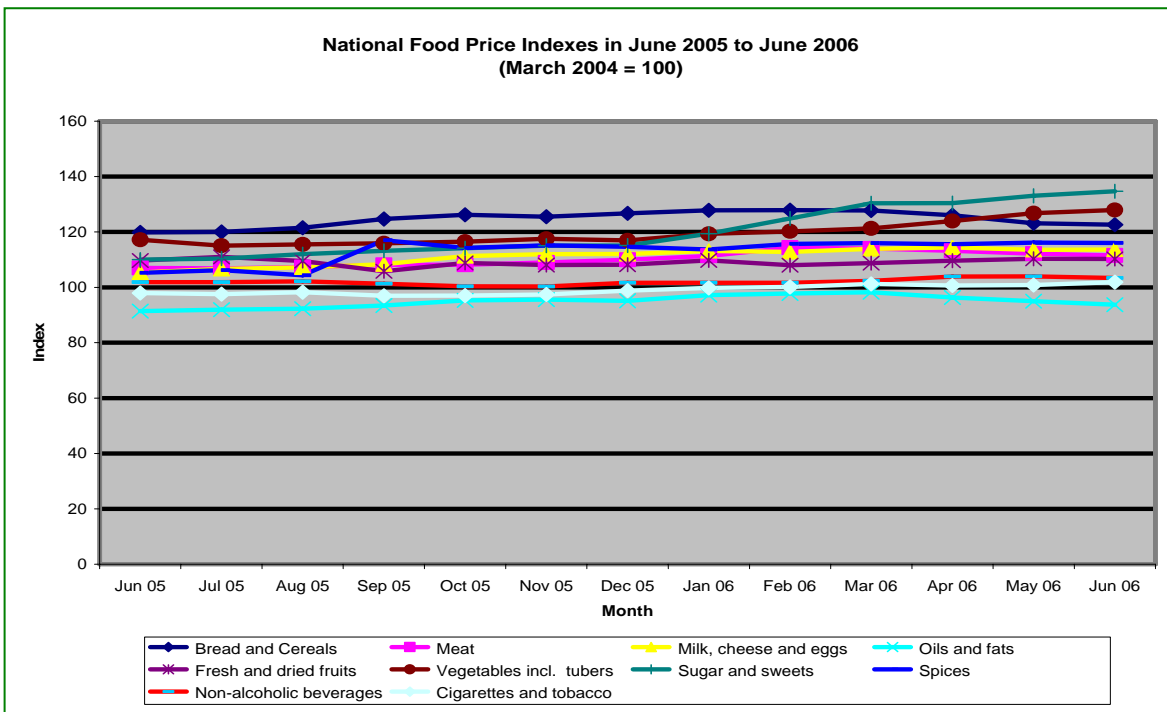
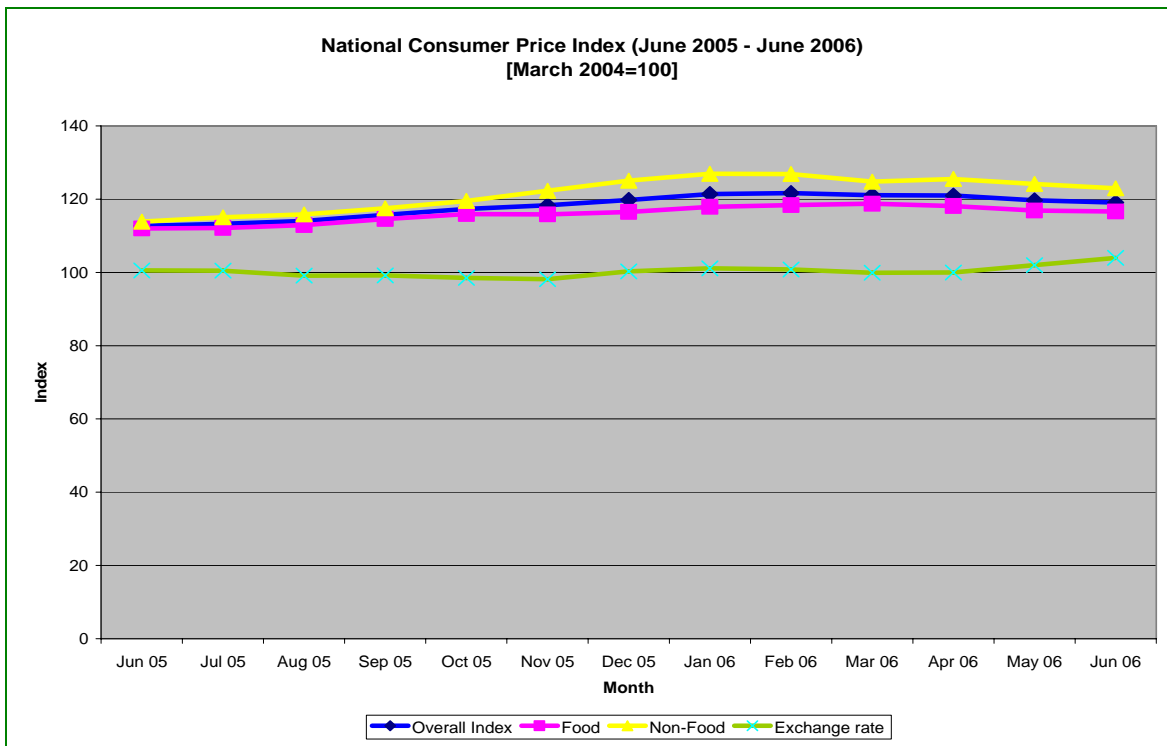
**Table 1: CPI in June 2006 compared to the last month and the same month last year**

Description	Increase in CPI percent points	
	Compared to May 06	Compared to June 2005
<b>OVERALL INDEX</b>	<b>-0.6</b>	<b>6.4</b>
<b>Food Index</b>	<b>-0.3</b>	<b>4.7</b>
Bread and cereals	-0.5	2.8
Meat	-0.7	4.5
Milk, cheese and eggs	0.1	8.3
Oils and fats	-1.3	2.3
Fresh and dried fruits	-0.1	0.6
Vegetables including tubers	1.2	10.7
Sugar and sweets	1.6	24.6
Spices	-0.1	10.8
Non-alcoholic beverages	-0.6	1.5
Cigarettes and tobacco	1.1	3.9
<b>Non-food Index</b>	<b>-1.1</b>	<b>9.1</b>
<b>Exchange rate Index</b>	<b>3.5</b>	<b>2.0</b>

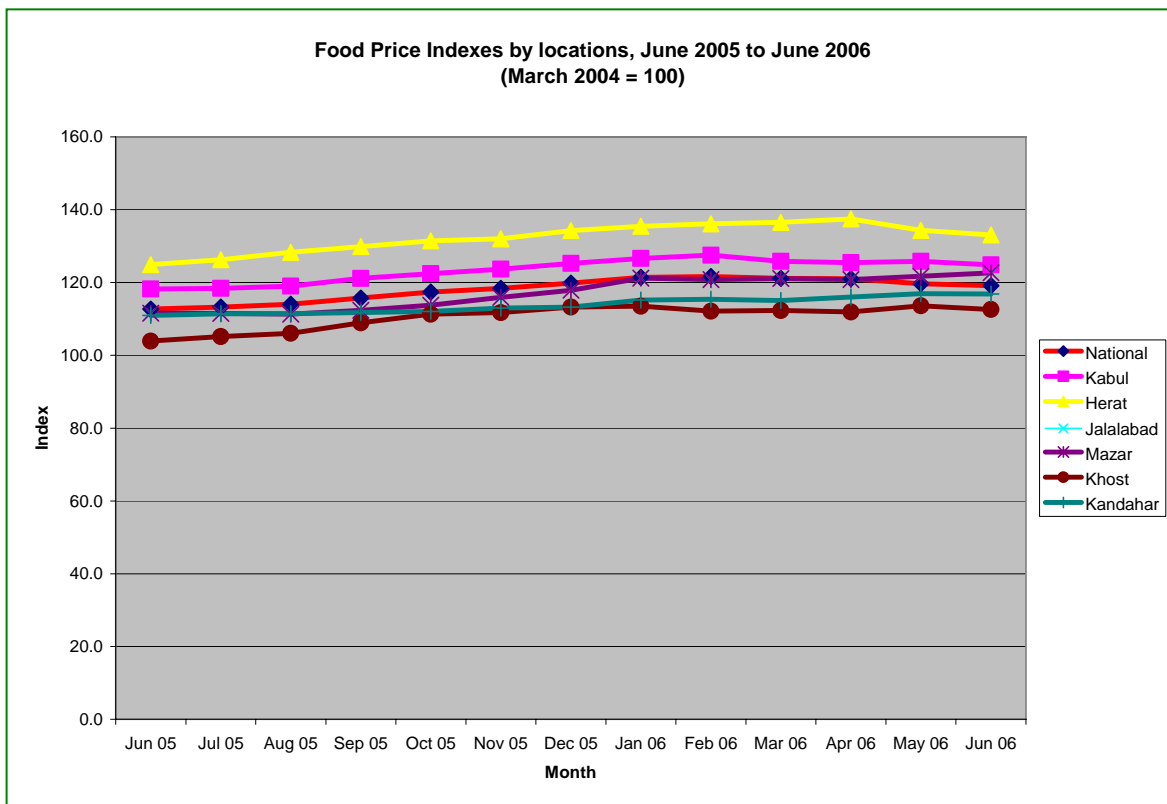
Among the food items, the annual increase in the index was the highest in the case of “sugar and sweets” (24.6 percent points up). This is not a good sign as far as healthy diversity in food consumption is concerned. Annual increases in the indexes in some of other food items – in order of the size in the increases - were as follows: “Spices” (10.8 percent points); “vegetables” (10.7); “milk cheese and egg” (8.3); “meat” (4.5); “bread and cereals” (2.8); “oil and fats” (2.3); and “fresh and dry fruits” (0.6).

<sup>1</sup>Consumer Price Index (CPI) is an index of the prices of consumer goods and services purchased by the consumers. It is generally used to measure the rate of inflation or the cost of living.

<sup>2</sup> Source: Central Statistics Office (CSO); see Annex I, II and III for details on these



Of the six locations covered under the CPI data collection, the highest annual inflation-rate for the food items was reported from Herat (12.6 percent points). The inflation-rate in food items was the least in Khost (3.7). In the case of non-food items Khost (16.6), Kabul (11.7) and Mazar/Jalalbad (11.1) experienced the highest annual inflation rates and Herat the least (1). (Annex I)



Compared to June 2005 Kabul's overall CPI rose by 6.7 percent points in June 2006. The annual increase in the food index in the period was 3.5 percent points. Inflation in the case of non-food crossed the 2-digit mark (the index rose by 11.7 percent points).

**Table 2: Annual and Monthly increases in CPI for Kabul (June 2006 compared to June 2005 and May 2006)**

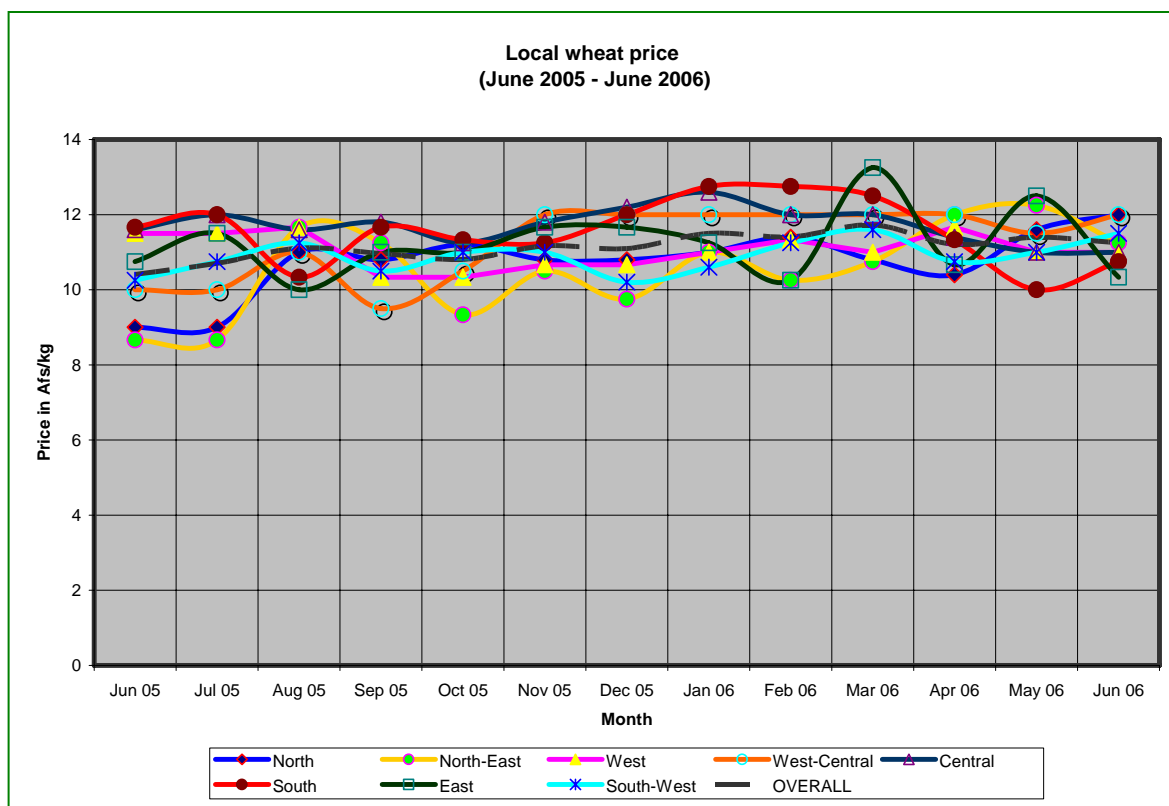
Description	Increase in CPI (Percent points)	
	In A year	In a Month
<b>OVERALL INDEX</b>	<b>6.7</b>	<b>-1.0</b>
<b>Food Index</b>	<b>3.5</b>	<b>-0.1</b>
Bread and cereals	0.9	-1.1
Meat	3.9	0.6
Milk, cheese and eggs	2.5	-0.2
Oils and fats	-1.2	1.0
Fresh and dried fruits	4.0	-1.3
Vegetables including tubers	17.2	3.1
Sugar and sweets	24.5	4.4
Spices	13.6	0.3
Non-alcoholic beverages	4.1	-0.4
Cigarettes and tobacco	-5.5	-0.6
<b>Non-food Index</b>	<b>11.7</b>	<b>-2.3</b>

In a month (May to June 2006) the CPI for Kabul decreased by 1.0 percent point, with a decrease of 0.1 in the food index and 2.3 in non-food.

## 2. Price of agricultural commodities

### 2.1. Wheat price

In June 2006 the average price of local wheat in the local markets was in the range of Afs 10.3-12.0 per kg. The price of local wheat in June was 3-5% higher than the price in May in the north, west-central, south and the south-west. The June prices in other regions were either at par or slightly lower than in May. At the national level, the price of this commodity in June was Afs 11.3 per kg, which is almost at par with the price in May 2006.

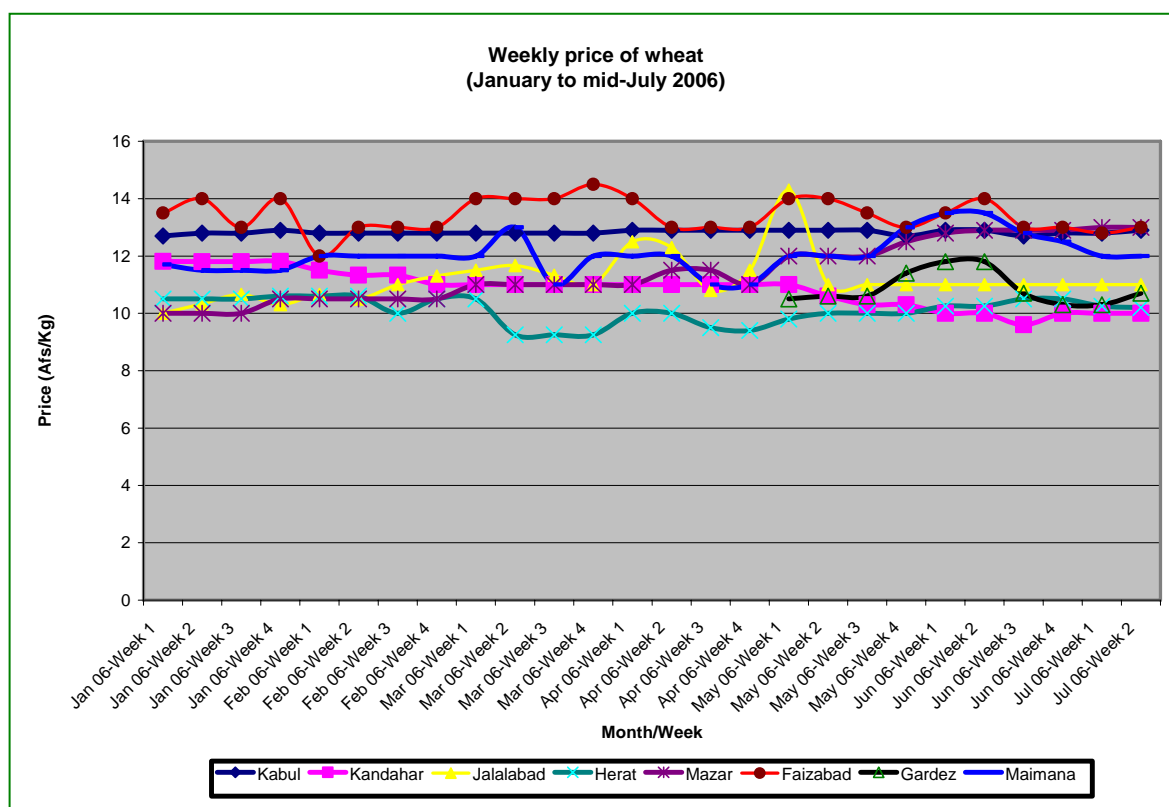


**Table 3: Average price of local wheat in various regions (Afs/kg)**

Region	February 2006	March 2006	April 2006	May 2006	June 2006
North	11.4	10.8	10.4	11.6	12.0
North-East	10.0	10.8	12.0	12.3	11.3
West	11.3	11.0	11.7	11.0	11.0
West-Central	12.0	12.0	12.0	11.5	12.0
Central	12.0	12.0	11.4	11.0	11.0
South	12.3	12.5	11.3	10.0	10.8
East	10.5	13.3	10.7	12.5	10.3
South-West	11.3	11.6	10.8	11.0	11.5
<b>Overall</b>	<b>11.4</b>	<b>11.7</b>	<b>11.2</b>	<b>11.4</b>	<b>11.3</b>

The average prices of local wheat in May and June 2006 across provinces show significantly lesser variations compared to the corresponding prices in May and June 2005. The wheat price in coming two months is expected to rise given the poor production prospects, especially from the standing rainfed crops. (Graph above and Annex IV)

Data on “weekly market price of wheat in the eight markets for January to mid-July 2006”<sup>3</sup> also suggests the above price pattern. (Graph below and Annex V)



## 2.2. Livestock and livestock products prices

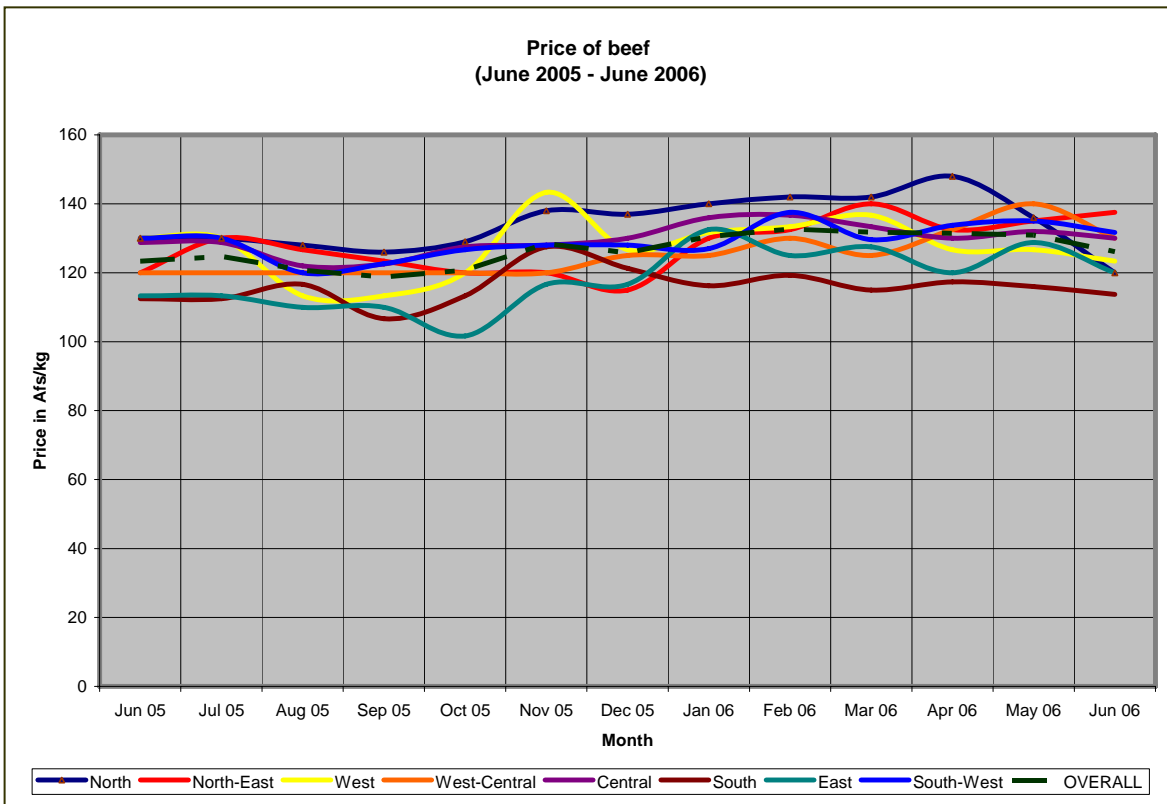
The prices of beef and mutton showed a generally decreasing trend in June. However, the price of chicken was about 10% higher than the price in May. The latter is an encouraging development indeed.

**Table 4: Average price of beef, mutton/lamb and chicken in the past six months**

Region	January	February	March	April	May	June	% increase/ decrease compared to the last month
Beef	131	134	132	131	131	126	-3.8%
Mutton	174	177	176	178	175	169	-3.4%
Chicken	81	82	79	71	70	74	+9.7%

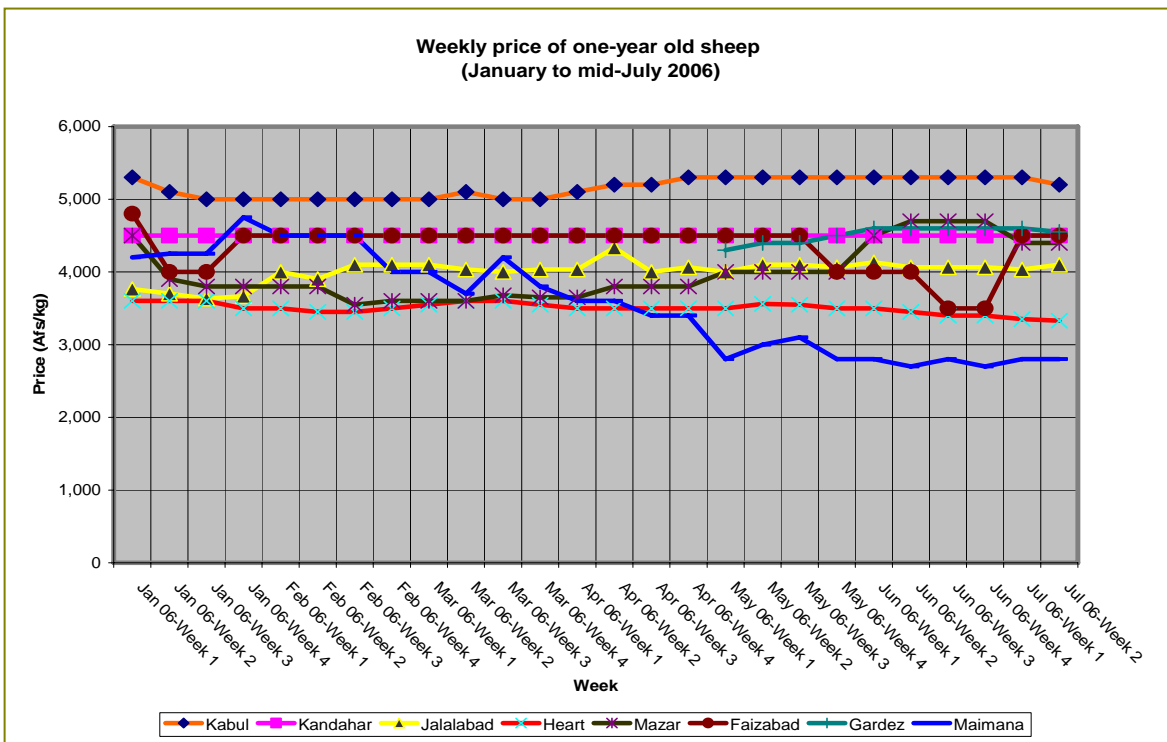
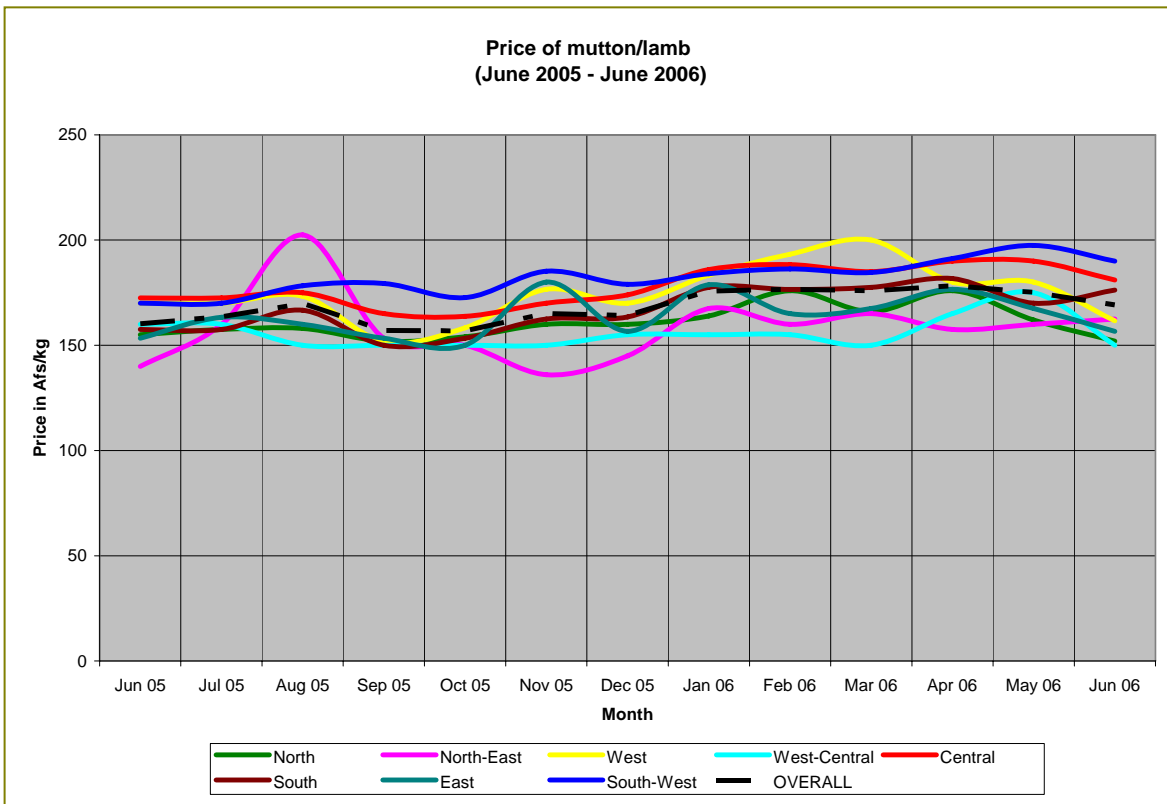
The prices of beef and mutton in June 2006 were Afs 126/kg and 169/kg, respectively. The price of beef showed a generally decreasing trend in all but the north-east region, where it showed 2% increase for the month. In the northern region, the price of beef in June was significantly lower (by 12%) compared to the price in May.

<sup>3</sup> Source: WFP

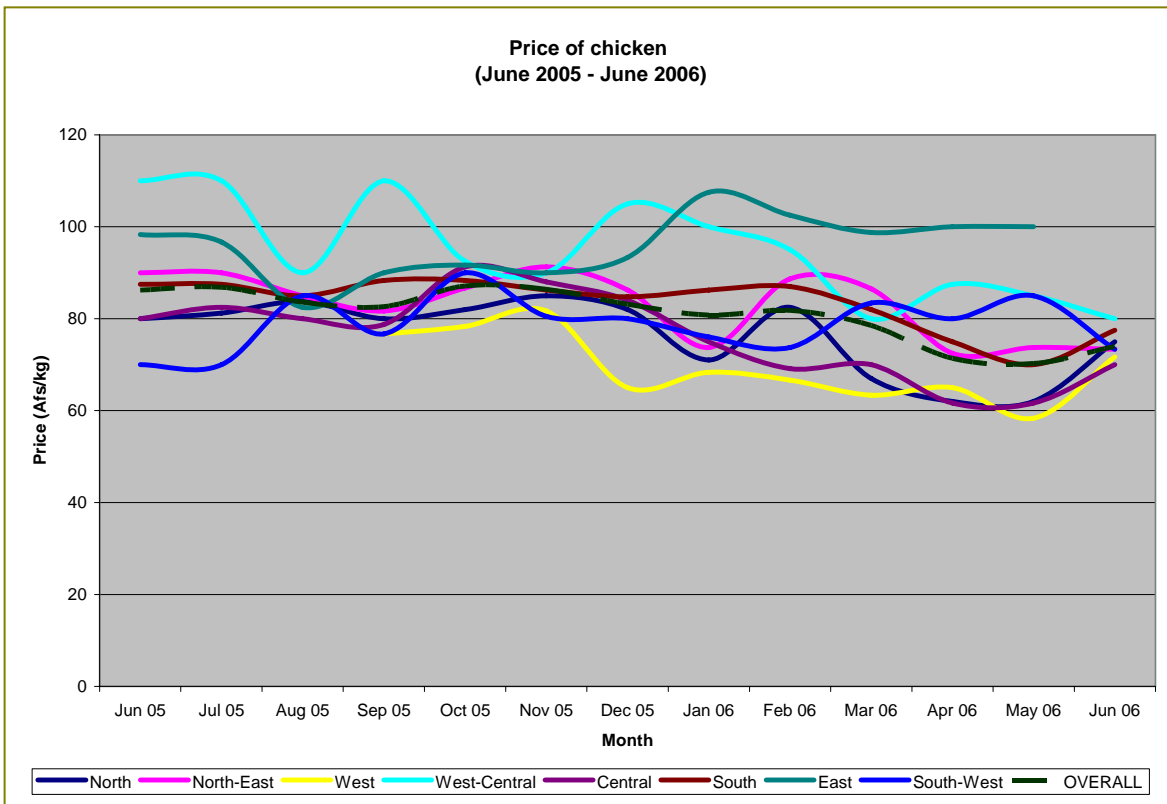


The price of mutton also showed a generally decreasing trend in June in all but the north-east and southern regions, where the monthly increases were in the range of 2% and 4%. The price of mutton/lamb in the west-central regions was significantly lower (by 14%) in June compared to the price in May. In June 2006 the average price of a one-year sheep ranged between Afs 2,800 (Maimana) to Afs 5,200 (Kabul) in the eight reporting locations<sup>4</sup>. No significant change in the price of one-year sheep was observed in the month. (Annex V and the Next page)

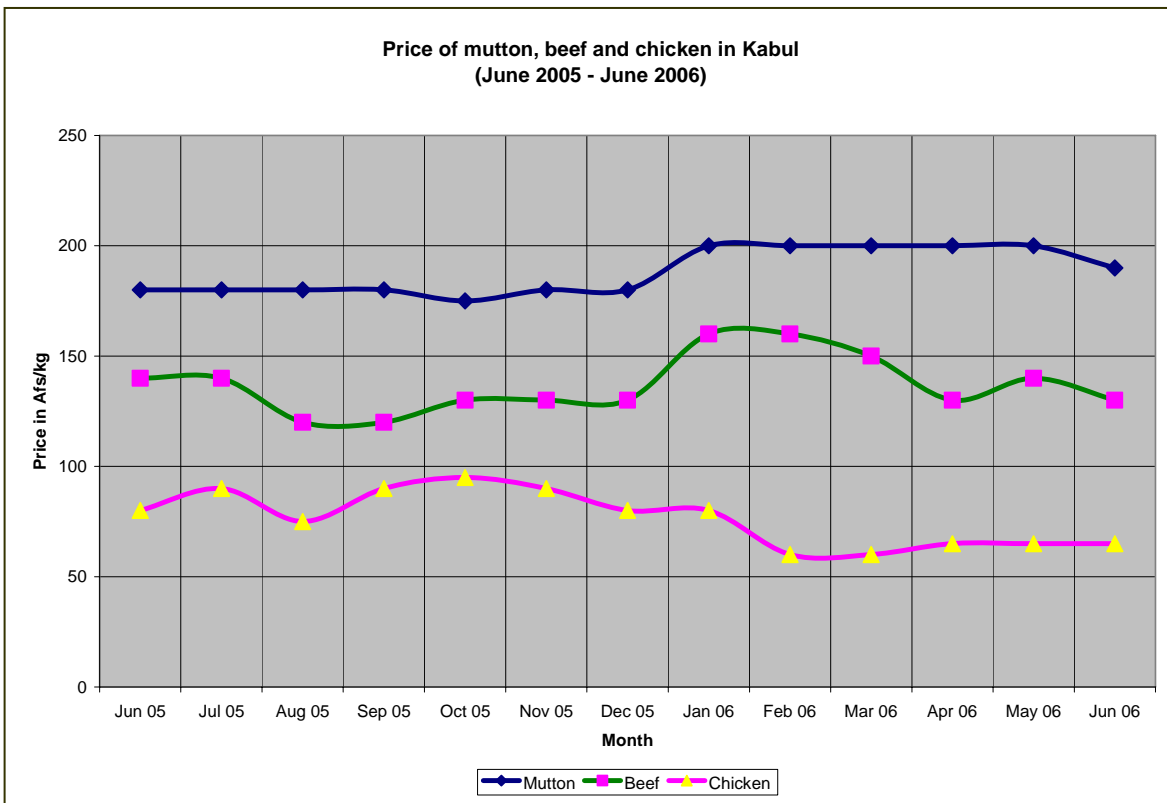
<sup>4</sup> Source: WFP



The price of chicken shows generally an increasing or at par trend across regions, except for the south-western parts of the country, where it still shows a negative trend. (Graph below)

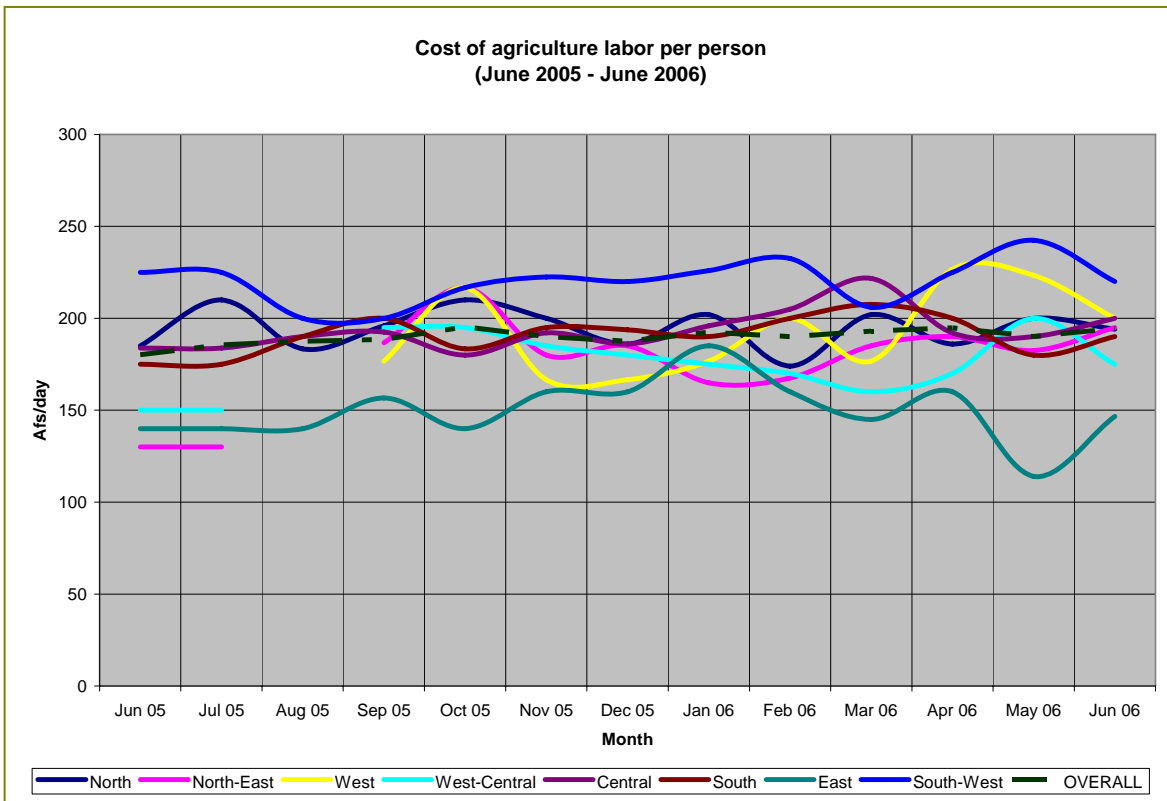


In Kabul, the prices of beef and mutton moderately and proportionately decreased in June. The price of chicken (Afs 65/kg) showed virtually no change from April to June.



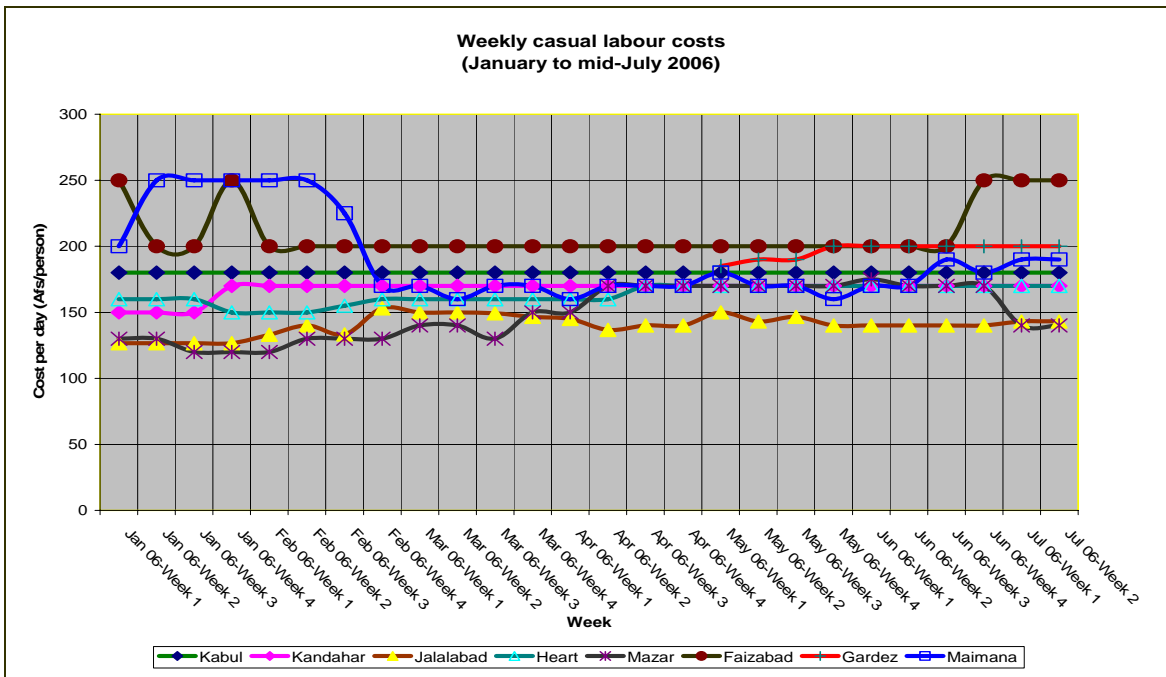
### 2.3. Labor costs

The average agriculture labor cost was around Afs 194 per person per day in June 2006, which is higher by 2% compared to the cost in May 2006. The labor cost for the month ranged between Afs 148-220 and showed substantial variations across provinces. Seasonal variations of labor costs within a region are also considerable.



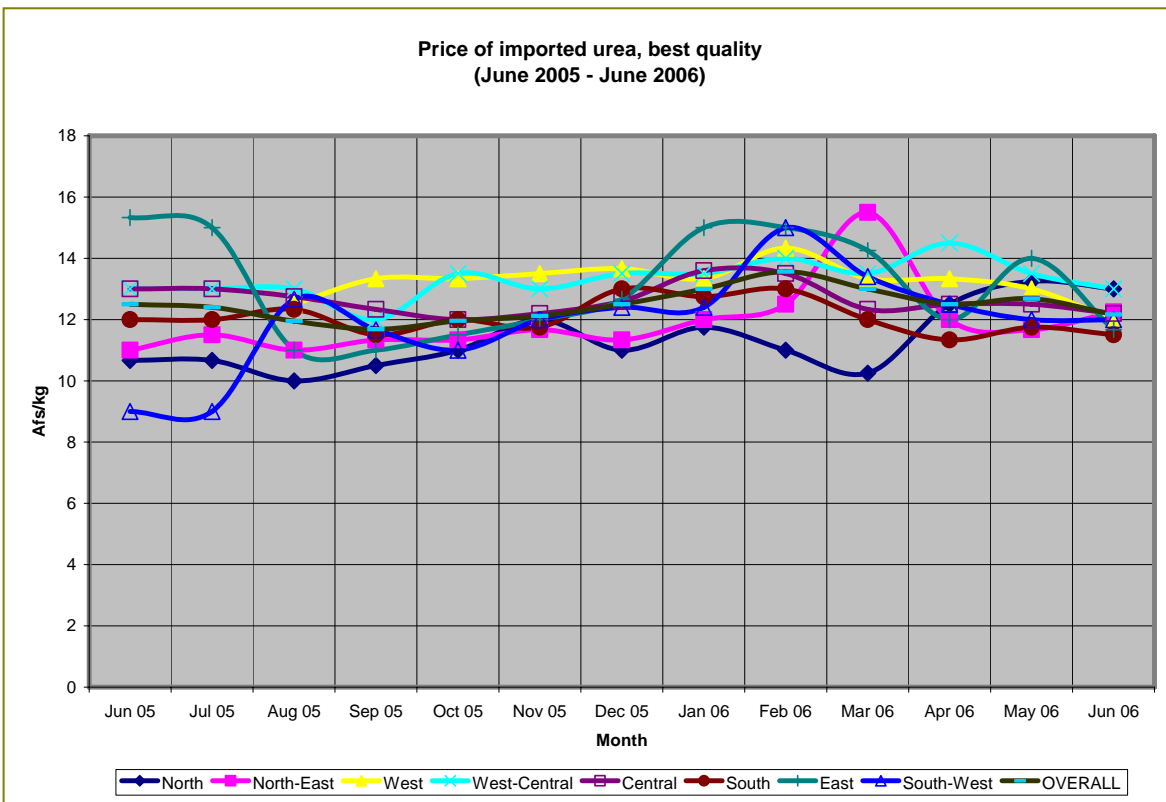
In June 2006 the casual labor costs<sup>5</sup> ranged between Afs 143 (Jalalabad) to Afs 250 (Faizabad) per day. These costs do not show much seasonal variations. (Graph next page and Annex V)

<sup>5</sup> Source: WFP



### 2.4. Fertilizer prices<sup>6</sup>

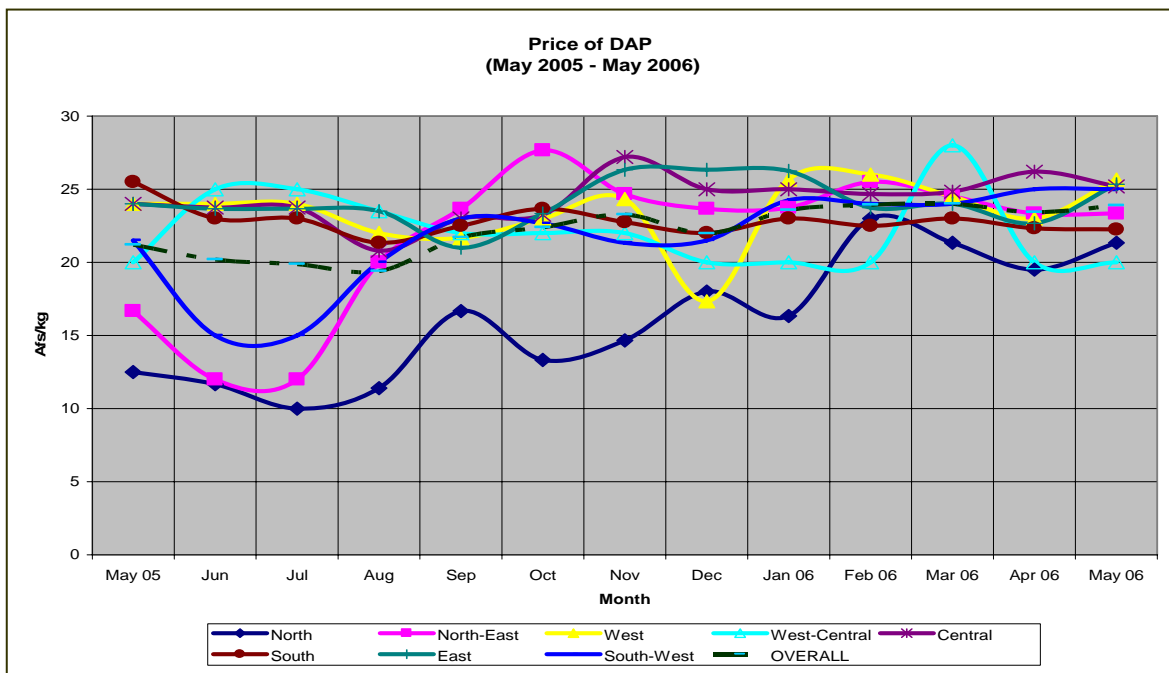
In June 2006 the average price of best quality, imported urea showed a generally decreasing trend. The price was Afs 12.2/kg, which is about 4% lower than the price in May.



<sup>6</sup> The price per bag expressed in Afs/kg

For majority of provinces the price of DAP showed decreasing or stabilizing tendency in June. The average price of the best quality DAP was Afs 23.4/kg for the month, which is equal to the price in April and 2% lower than the price in May (Afs 23.9/Kg).

DAP prices are highly variable in Afghanistan. The large variations in DAP prices across provinces can be attributed to: (i) the marked difference in the quality of DAP available in the markets and (ii) the transportation costs involved. DAP prices in the northern part of the country are more consistent with the international price.



**Annex I: Consumer Price Index (CPI) for June 2005 - June 2006 by location**

(March 2004 = 100)

	Jun 2005	Jul 2005	Aug 2005	Sep 2005	Oct 2005	Nov 2005	Dec 2005	Jan 2006	Feb 2006	Mar 2006	Apr 2006	May 2006	Jun 2006
<b>National</b>													
<b>Overall Index</b>	<b>112.7</b>	<b>113.3</b>	<b>114.1</b>	<b>115.7</b>	<b>117.3</b>	<b>118.4</b>	<b>119.8</b>	<b>121.4</b>	<b>121.7</b>	<b>121.1</b>	<b>121.0</b>	<b>119.7</b>	<b>119.1</b>
- Food	112.0	112.2	112.9	114.6	115.9	115.9	116.5	117.9	118.4	118.8	118.1	116.9	116.6
- Non-Food	113.9	115.0	115.9	117.5	119.6	122.3	125.1	126.9	126.9	124.8	125.5	124.2	123.0
<b>Kabul</b>													
<b>Overall Index</b>	<b>118.2</b>	<b>118.4</b>	<b>119.0</b>	<b>121.1</b>	<b>122.4</b>	<b>123.7</b>	<b>125.2</b>	<b>126.6</b>	<b>127.5</b>	<b>125.8</b>	<b>125.5</b>	<b>125.8</b>	<b>124.9</b>
- Food	114.4	114.2	114.3	115.5	116.7	117.2	117.6	118.6	119.8	118.5	117.4	118.1	118.0
- Non-Food	124.1	125.1	126.3	130.0	131.4	134.0	137.4	139.3	139.6	137.5	138.3	138.1	135.8
<b>Herat</b>													
<b>Overall Index</b>	<b>124.9</b>	<b>126.2</b>	<b>128.3</b>	<b>129.9</b>	<b>131.5</b>	<b>132.0</b>	<b>134.3</b>	<b>135.5</b>	<b>136.1</b>	<b>136.5</b>	<b>137.5</b>	<b>134.3</b>	<b>133.1</b>
- Food	121.6	121.3	124.0	126.8	128.9	128.0	129.6	131.7	133.0	135.7	136.8	134.5	134.3
- Non-Food	130.1	134.2	135.1	134.8	135.5	138.4	141.7	141.5	141.2	137.9	138.5	134.1	131.2
<b>Jalalabad</b>													
<b>Overall Index</b>	<b>111.5</b>	<b>111.5</b>	<b>111.3</b>	<b>112.4</b>	<b>113.8</b>	<b>115.9</b>	<b>117.9</b>	<b>121.2</b>	<b>120.8</b>	<b>121.1</b>	<b>120.8</b>	<b>121.7</b>	<b>122.7</b>
- Food	108.5	108.4	108.0	109.4	110.1	111.9	112.7	114.4	114.0	114.8	114.0	118.4	119.3
- Non-Food	116.4	116.5	116.4	117.1	119.5	122.4	126.1	132.0	131.7	131.0	131.7	127.0	127.9
<b>Mazar</b>													
<b>Overall Index</b>	<b>111.5</b>	<b>111.5</b>	<b>111.3</b>	<b>112.4</b>	<b>113.8</b>	<b>115.9</b>	<b>117.9</b>	<b>121.2</b>	<b>120.8</b>	<b>121.1</b>	<b>120.8</b>	<b>121.7</b>	<b>122.7</b>
- Food	108.5	108.4	108.0	109.4	110.1	111.9	112.7	114.4	114.0	114.8	114.0	118.4	119.3
- Non-Food	116.4	116.5	116.4	117.1	119.5	122.4	126.1	132.0	131.7	131.0	131.7	127.0	127.9
<b>Khost</b>													
<b>Overall Index</b>	<b>103.9</b>	<b>105.1</b>	<b>106.1</b>	<b>108.9</b>	<b>111.3</b>	<b>111.8</b>	<b>113.2</b>	<b>113.5</b>	<b>112.1</b>	<b>112.3</b>	<b>111.9</b>	<b>113.6</b>	<b>112.6</b>
- Food	103.4	103.9	104.5	106.7	108.7	106.1	107.7	108.6	106.0	107.9	108.5	108.7	107.1
- Non-Food	104.8	107.1	108.6	112.5	115.4	120.8	122.1	121.1	121.8	119.2	117.3	121.4	121.3
<b>Kadahar</b>													
<b>Overall Index</b>	<b>110.9</b>	<b>111.4</b>	<b>111.5</b>	<b>111.7</b>	<b>112.1</b>	<b>113.0</b>	<b>113.2</b>	<b>115.2</b>	<b>115.4</b>	<b>115.0</b>	<b>116.0</b>	<b>116.9</b>	<b>116.9</b>
- Food	107.0	107.6	107.6	107.8	108.4	108.4	108.2	109.7	109.8	110.5	111.0	111.6	112.2
- Non-Food	117.1	117.5	117.7	118.0	118.0	120.1	121.3	123.9	124.3	122.3	124.1	125.4	124.4

**Annex II: National Consumer Price Index (CPI) for June 2005 to June 2006 by item**  
(March 2004 = 100)

	Weight	Jun 2005	July 2005	Aug 2005	Sep 2005	Oct 2005	Nov 2005	Dec 2005	Jan 2006	Feb 2006	Mar 2006	Apr 2006	May 2006	Jun 2006
<b>Overall Index</b>	<b>100.0</b>	<b>112.7</b>	<b>113.3</b>	<b>114.1</b>	<b>115.7</b>	<b>117.3</b>	<b>118.4</b>	<b>119.8</b>	<b>121.4</b>	<b>121.7</b>	<b>121.1</b>	<b>121.0</b>	<b>119.7</b>	<b>119.1</b>
Monthly % Change		0.7	0.5	0.7	1.5	1.4	0.9	1.2	1.3	0.2	(0.5)	(0.1)	(1.1)	(0.5)
<b>Food</b>	<b>61.3</b>	<b>112.0</b>	<b>112.2</b>	<b>112.9</b>	<b>114.6</b>	<b>115.9</b>	<b>115.9</b>	<b>116.5</b>	<b>117.9</b>	<b>118.4</b>	<b>118.8</b>	<b>118.1</b>	<b>116.9</b>	<b>116.6</b>
Bread and Cereals	28.0	119.8	120.0	121.5	124.7	126.1	125.5	126.7	127.8	127.9	127.7	126.1	123.1	122.6
Meat	6.0	106.9	106.8	107.3	108.1	108.1	108.9	109.9	111.4	114.3	114.0	113.2	112.1	111.5
Milk, cheese and eggs	5.6	105.3	106.6	107.2	108.3	111.3	112.0	112.0	113.2	112.8	113.8	114.4	113.5	113.6
Oils and fats	5.3	91.4	91.9	92.3	93.4	95.3	95.6	95.1	97.2	97.8	98.2	96.3	95.0	93.7
Fresh and dried fruits	4.9	109.7	111.0	109.4	105.8	108.8	108.0	108.1	109.7	107.9	108.7	109.6	110.3	110.2
Vegetables incl. tubers	4.9	117.2	115.0	115.5	115.9	116.4	117.5	116.9	119.3	120.2	121.2	124.0	126.7	127.9
Sugar and sweets	1.8	110.0	110.3	111.9	113.2	114.1	115.0	115.1	119.3	124.8	130.4	130.4	133.0	134.7
Spices	1.1	105.2	106.2	104.4	117.0	114.3	115.2	114.6	113.7	115.7	116.0	115.6	116.1	116.0
Non-alcoholic beverages	2.0	101.9	101.8	102.1	101.3	100.4	100.3	101.6	101.6	101.6	102.3	103.9	104.0	103.4
Cigarettes and tobacco	1.7	97.9	97.6	98.2	96.9	97.0	97.4	98.8	99.7	100.1	101.2	100.6	100.8	101.9
<b>Non-Food</b>	<b>38.7</b>	<b>113.9</b>	<b>115.0</b>	<b>115.9</b>	<b>117.5</b>	<b>119.6</b>	<b>122.3</b>	<b>125.1</b>	<b>126.9</b>	<b>126.9</b>	<b>124.8</b>	<b>125.5</b>	<b>124.2</b>	<b>123.0</b>
Clothing	7.2	101.8	101.3	100.8	101.1	102.0	103.0	103.4	103.7	103.9	104.4	103.5	103.0	103.9
Housing	17.2	126.4	129.0	130.4	133.4	136.1	140.3	145.2	147.9	148.7	144.7	144.3	140.6	137.7
- Rent	7.1	156.1	162.9	164.5	165.8	166.9	168.3	172.3	173.4	174.2	172.2	171.5	164.9	161.3
-Construction material	3.2	107.4	109.2	112.6	112.0	112.2	112.5	114.2	114.4	113.9	114.8	120.2	120.4	116.4
-Electricity and fuels	6.8	104.2	102.8	103.1	109.5	115.1	124.0	131.4	137.1	138.4	130.1	127.2	124.9	122.9
Household goods	7.0	97.2	97.0	96.9	97.2	97.9	98.3	98.7	100.0	100.5	101.7	101.9	101.6	102.3
Health	2.0	111.7	113.2	114.0	114.7	116.8	117.5	117.6	120.1	122.7	122.7	123.2	122.5	123.4
Transportation	2.3	130.0	129.3	133.5	138.5	145.6	155.3	160.8	162.4	151.2	142.1	157.7	165.0	162.7
Communication	0.9	97.4	97.4	97.4	97.4	97.4	97.4	97.4	97.4	97.7	97.7	97.7	97.7	97.7
Education	1.2	100.4	100.3	100.2	99.2	99.6	99.3	99.1	99.3	99.6	96.9	99.9	99.6	99.8
Miscellaneous	0.9	98.9	104.0	103.5	100.6	100.9	101.3	107.1	111.8	111.5	112.1	112.0	110.9	110.5
<b>Exchange rate Afghani/US\$</b>		100.5	100.5	99.2	99.2	98.5	98.2	100.3	101.1	100.8	99.9	100.0	102.0	104.0

**Annex III: Kabul Consumer Price Index for June 2005 to June 2006**

(March 2004 = 100)

	Jun 2005	Jul 2005	Aug 2005	Sep 2005	Oct 2005	Nov 2005	Dec 2005	Jan 2006	Feb 2006	Mar 2006	Apr 2006	May 2006	Jun 2006
<b>Overall Index</b>	<b>118.2</b>	<b>118.4</b>	<b>119.0</b>	<b>121.1</b>	<b>122.4</b>	<b>123.7</b>	<b>125.2</b>	<b>126.6</b>	<b>127.5</b>	<b>125.8</b>	<b>125.5</b>	<b>125.8</b>	<b>124.9</b>
Monthly % Change	0.8	0.2	0.5	1.8	1.1	1.0	1.2	1.1	0.7	-1.3	-0.3	0.3	-0.8
<b>Food</b>	<b>114.4</b>	<b>114.2</b>	<b>114.3</b>	<b>115.5</b>	<b>116.7</b>	<b>117.2</b>	<b>117.6</b>	<b>118.6</b>	<b>119.8</b>	<b>118.5</b>	<b>117.4</b>	<b>118.1</b>	<b>118.0</b>
Bread and Cereals	116.8	116.1	116.2	118.7	120.8	121.7	122.0	122.9	124.6	121.4	119.5	118.8	117.7
Meat	117.4	116.6	116.8	116.7	117.4	117.1	117.8	118.4	120.6	120.8	120.2	120.7	121.3
Milk, cheese and eggs	108.9	108.7	109.9	111.2	112.0	111.8	112.5	113.0	113.6	112.9	112.3	111.6	111.4
Oils and fats	98.9	99.0	98.2	98.5	98.7	98.8	98.2	98.4	98.3	97.1	95.6	96.7	97.7
Fresh and dried fruits	122.7	123.3	123.1	123.7	125.9	126.1	126.7	129.4	125.7	126.5	126.2	128.1	126.8
Vegetables incl. tubers	121.5	121.8	122.0	121.8	121.0	120.7	121.5	123.0	124.8	125.9	127.9	135.6	138.7
Sugar and sweets	117.9	118.0	120.8	120.7	120.1	120.7	120.5	125.5	134.7	137.2	136.7	137.9	142.3
Spices	113.3	116.6	117.9	116.8	119.4	121.8	123.1	123.0	126.7	126.9	124.2	126.6	126.9
Non-alcoholic beverages	103.9	104.2	103.7	103.3	103.4	104.6	105.1	105.6	106.3	105.7	106.2	108.5	108.1
Cigarettes and tobacco	97.5	97.5	97.6	92.6	92.6	92.8	92.9	92.9	92.9	94.0	92.6	92.6	92.0
<b>Non-Food</b>	<b>124.1</b>	<b>125.1</b>	<b>126.3</b>	<b>130.0</b>	<b>131.4</b>	<b>134.0</b>	<b>137.4</b>	<b>139.3</b>	<b>139.6</b>	<b>137.5</b>	<b>138.3</b>	<b>138.1</b>	<b>135.8</b>
Clothing	111.8	111.8	111.5	111.6	112.8	113.2	113.4	113.9	113.8	112.6	112.3	112.3	114.7
Housing	140.8	142.8	145.1	149.9	152.4	157.1	162.6	165.9	166.8	164.0	163.4	161.8	155.6
- Rent	189.5	194.2	198.2	201.7	205.5	209.6	213.1	217.9	220.9	218.8	217.0	215.3	205.8
-Construction material	119.6	123.4	126.6	124.9	126.8	125.1	125.8	125.7	123.9	125.0	130.8	129.1	121.7
-Electricity and fuels	99.7	98.0	98.2	107.2	109.0	117.3	127.1	130.3	130.3	125.2	122.8	121.0	119.1
Household goods	104.0	104.1	104.4	105.7	106.9	108.1	108.7	109.1	109.1	110.5	109.5	110.4	111.0
Health	124.7	126.8	128.3	129.4	131.3	131.5	132.6	135.0	140.3	140.0	140.4	140.9	143.9
Transportation	123.8	122.6	124.9	144.4	139.6	142.5	150.8	150.5	146.1	129.7	151.7	157.1	153.1
Communication	103.0	103.0	103.0	103.0	103.0	103.0	103.0	103.0	103.0	103.0	103.0	103.0	103.0
Education	99.5	100.1	100.1	100.2	100.5	100.6	100.6	100.6	100.4	99.8	99.7	99.6	99.0
Miscellaneous	115.0	115.6	113.6	118.2	118.5	118.6	131.4	138.2	137.2	139.2	139.6	139.0	139.3

Source: Central Statistics Office

Annex IV: Retail market price of agricultural commodities in provincial centers in June 2006 (Source: FAAHM)

SN	Region	Province	Wheat Local (Afs/kg)	Wheat imported (Afs/kg)	Wheat Flour local (Afs/kg)	Wheat Flour imported (Afs/kg)	Rice local (Afs/kg)	Rice imported (Afs/kg)	Maize (Afs/kg)	Mungbeans (Afs/kg)	Pea (Afs/kg)	Potato (Afs/kg)	Vegetable oil (Afs/litre)
1	North	Faryab	12	12	14	15	31	35	11	47	45	14	45
2	North	Juzjan	12	11	13	15	33	36	10	40	40	17	40
3	North	Sar-i-Pul	12	10	14	14	26	35	9	28	29	18	45
4	North	Balkh	12		13	13	32	35	12	31	40	16	40
5	North	Samangan	12		14	13	25	32	15	34	40	15	34
6	North-East	Bughlan	12		13	13	26	34	7	30	40	15	40
7	North-East	Kunduz	10		13	14	24	35	10	22	38	12	42
8	North-East	Takhar	11	9	12	15	22	34	10	34	30	19	45
9	North-East	Badakhshan	12	14	16	20	25	33	14	25	50	15	45
10	West	Heart	11		15	15	33	34	9	30	35	10	40
11	West	Farah	10			14		38	8	45	40	10	40
12	West	Badghis	12		13	16		36	12	35		20	43
13	West-Central	Ghor	13			14		45	12	40	40	20	45
14	West-Central	Bamyan	11		13	15	29	34		45	50	13	40
15	Central	Kabul	11		12	12	26	35	10	30	40	17	42
16	Central	Parwan	11	8	12	14	30	32	7	40	45	16	40
17	Central	Panjsheer											
18	Central	Kapisa	10	10	13	14	17	33	7	35	42	14	46
19	Central	Logar	11	11	12	12		35	9	35	48	18	45
20	Central	Wardak	12	12	14	15	23	35	9	45	50	16	40
21	South	Paktya	10	12	12	13	24	33	8	36	34	17	38
22	South	Paktika	12	13		15		33	9	35	40	16	40
23	South	Khost	10			12	15	35	6	37	33	17	43
24	South	Ghazni	11	12		13		30	7	40	40	14	40
25	East	Nangarhar	10		11	12	26	30	8	39	43	11	38
26	East	Laghman	11		13	15	21	35	8	35	39	10	40
27	East	Kunarha	10	10	12	13	30	35	8	45	45	17	45
28	East	Nooristan											
29	South-West	Kandahar	13		14			34	9	36	59	14	43
30	South-West	Helmand	10		12	14		30	6	49	45	16	38
31	South-West	Zabul	11		14	14		35	10	27	35	16	40
32	South-West	Nimroz	10			14		36	10	38	35	16	40
33	South-West	Uruzgan	11	13	13	16	25	45	8	45	45	18	46
34	South-West	Daikunde	14	16		16		38		29	29	20	50

Annex IV: Retail market price of agricultural commodities in provincial centers in June 2006 (Source: FAAHM)

SN	Region	Province	Milk (Afs/litre)	Beef (Afs/kg)	Mutton (Afs/kg)	Chicken Local (Afs/kg)	Chicken Imported (Afs/kg)	Male Sheep live, one year (Afs/head)	Female Sheep live, one year (Afs/head)	Male Goat live, one year (Afs/head)	Female Goat live, one year (Afs/head)	Wheat seed best quality (Afs/kg)	Local Urea best quality (Afs/kg)
1	North	Faryab	20	120	150		70	3,500	3,000	2,500	2,300	15	14
2	North	Juzjan	18	130	160		80	3,500	4,000	2,200	2,500	13	
3	North	Sar-i-Pul	10	100	140		90	4,000	3,000	2,500	2,000	13	14
4	North	Balkh	20	130	160		60	3,000	2,800	2,000	2,300	14	12
5	North	Samangan	20	120	150		75	2,450	2,300	1,800	1,900	13	11
6	North-East	Bughlan	20	140	160	90	80	2,500	2,300	2,300	2,100	11	12
7	North-East	Kunduz	15	160	180	100	60	3,800	3,500	3,500	2,800	12	12
8	North-East	Takhar	16	130	150		80	4,000	5,000	3,000	3,000	12	13
9	North-East	Badakhshan		120	160			5,000	4,500	3,500	3,000	13	16
10	West	Heart	20	140	180		75	3,000	3,500	2,500	3,000	11	
11	West	Farah	15	130	170		80	3,000	3,000	1,800	1,800	12	
12	West	Badghis	20	100	135		60	2,000	1,700	2,000	2,000	12	
13	West-Central	Ghor	20	100	120		80	4,000	3,000	3,000	2,000	14	
14	West-Central	Bamyan	30	160	180			6,000	3,200	2,500	2,000	14	14
15	Central	Kabul	20	130	190	100	65	5,000	4,200	3,000	2,800	12	
16	Central	Parwan	16	120	180		75	4,200	4,500	3,500	3,000	13	13
17	Central	Panjsheer											
18	Central	Kapisa		140	180			5,000	4,500	4,000	3,500	11	
19	Central	Logar	13	130	180			5,000	3,500	3,500	3,000		12
20	Central	Wardak	16	130	175			5,000	4,500	2,500	2,000	15	11
21	South	Paktya		110	170		80	5,000	4,500	4,000	3,500	12	
22	South	Paktika	30	115	185			5,000	4,500	3,000	2,500	17	
23	South	Khost		100	170		75	2,000	2,000	1,500	1,500	11	
24	South	Ghazni	25	130	180			4,000	3,500	2,600	2,500	12	
25	East	Nangarhar	20	120	170	110		4,500	3,700	2,900	2,400	12	
26	East	Laghman	10	130	140	110		4,000	3,400	3,000	2,500		
27	East	Kunarha	20	110	160			4,500	3,000	2,500	2,000		
28	East	Nooristan											
29	South-West	Kandahar	23	125	205			4,920	4,510	3,500	3,000	13	
30	South-West	Helmand	18	125	180	100	75	2,800	2,400	1,500	2,000	10	
31	South-West	Zabul	18	125	190		75	3,100	3,000	2,300	2,200	14	
32	South-West	Nimroz		130	165		70	4,500	4,100	4,200	3,600		
33	South-West	Uruzgan		145	230	110		4,500	6,000	6,000	4,500	15	
34	South-West	Daikunde		140	170	150		2,500	2,300	2,000	1,800	15	

Annex IV: Retail market price of agricultural commodities in provincial centers in June 2006 (Source: FAAHM)

SN	Region	Province	Imported Urea best quality (Afs/kg)	DAP best quality (Afs/kg)	Agriculture labour (Afs/day)	Pair of oxen hiring (Afs/day)	Water pump charge (Afs/hour)	Tractor hiring charge (Afs/hour)	Diesel (Afs/Litre)	Liquid Gas (Afs/kg)	Kerosene (Afs/litre)	Petrol (Afs/litre)	Raw Opium (Afs/kg)
1	North	Faryab	14	18	200	500	120	600	30	40	27	28	
2	North	Juzjan			200	600	300	550	27	35	30	27	4,000
3	North	Sar-i-Pul	15		200	600		700	26	40	26	28	
4	North	Balkh	12	25	200	660	260	550	28	35	29	27	4,000
5	North	Samangan	11		170	350		500	28	35	29	28	
6	North-East	Bughlan	10	22	180	700	140	650	27	36		25	4,500
7	North-East	Kunduz	11	23	230	500		700	30	40		28	
8	North-East	Takhar	12	27	170	700		700	31	35		29	
9	North-East	Badakhshan	16		200	1,000			35	50		35	2,500
10	West	Heart	11	22	200	800	340	400	28	30	28	28	
11	West	Farah	13	24	200		100	500	30	28	38	25	
12	West	Badghis	12		200	400		550	45	45	45	45	
13	West-Central	Ghor	13	20	150	300	350	500	35	36		34	
14	West-Central	Bamyan	13	25	200				35	43		35	
15	Central	Kabul	11	24	200	600	250	450	30	33	30	28	
16	Central	Parwan	15	26	200	500	150	400	35	40	30	30	
17	Central	Panjsheer											
18	Central	Kapisa	12	24	200	500	150	500	30	35	34	30	
19	Central	Logar	11	22	200	700	250	400	30	45		28	
20	Central	Wardak	12	24	200	500	130	500	28	40	36	29	
21	South	Paktya	11	22	200		200	350	30	38	25	27	
22	South	Paktika	13	23	160		150	300	33	35	35	35	
23	South	Khost	11	23	200		250	400	29	41	30	31	
24	South	Ghazni	11	20	200	600	200	400	33	35	30	33	
25	East	Nangarhar	11	25	160	500	200	300	30	40	32	29	
26	East	Laghman	12	23	150	500		400	32	40	35	30	
27	East	Kunarha	12	25	130			350	31	42	33	33	
28	East	Nooristan											
29	South-West	Kandahar		25	200		350	350	28	28	28	32	5,000
30	South-West	Helmand	10	21	200		100	800	25	30	26	27	6,000
31	South-West	Zabul	12	22	200	420	200	360	25	35	30	30	
32	South-West	Nimroz	10		270			550	23	20	23	23	
33	South-West	Uruzgan	13	28	250			350	36	36	36	36	6,250
34	South-West	Daikunde	15	26	200	500		500	38	48	65	38	8,000

**Annex V**

**Weekly Market price of agricultural commodities/services**  
**[Source: Vulnerability Mapping Unit (VAM), WFP Afghanistan]**

Location	Commodity/Service	April, 06		May, 06				June, 06				July, 06	
		Week 3	Week 4	Week 1	Week 2	Week 3	Week 4	Week 1	Week 2	Week 3	Week 4	Week 1	Week 2
Kabul	Wheat (kg)	12.9	12.9	12.9	12.9	12.9	12.7	12.9	12.9	12.7	12.8	12.8	12.9
Kandahar	Wheat (kg)	11.0	11.0	11.0	10.6	10.3	10.3	10.0	10.0	9.6	10.0	10.0	10.0
Jalalabad	Wheat (kg)	10.8	11.5	14.3	11.0	11.0	11.0	11.0	11.0	11.0	11.0	11.0	11.0
Heart	Wheat (kg)	9.5	9.4	9.8	10.0	10.0	10.0	10.3	10.3	10.5	10.5	10.3	10.2
Mazar	Wheat (kg)	11.5	11.0	12.0	12.0	12.0	12.5	12.8	12.9	12.9	12.9	13.0	13.0
Faizabad	Wheat (kg)	13.0	13.0	14.0	14.0	13.5	13.0	13.5	14.0	13.0	13.0	12.8	13.0
Gardez	Wheat (kg)			10.5	10.6	10.6	11.4	11.8	11.8	10.7	10.3	10.3	10.7
Maimana	Wheat (kg)	11.0	11.0	12.0	12.0	12.0	13.0	13.5	13.5	12.8	12.5	12.0	12.0
Kabul	Wheat flour (kg)	13.8	13.9	13.9	13.8	13.9	13.8	13.8	13.8	13.8	13.8	13.8	14.0
Kandahar	Wheat flour (kg)	12.4	12.4	12.4	12.1	12.0	12.0	11.9	11.9	11.8	11.8	11.8	11.8
Jalalabad	Wheat flour (kg)	13.8	14.0	13.6	12.8	12.7	11.8	12.3	12.6	13.0	13.3	13.0	12.0
Heart	Wheat flour (kg)	13.6	13.7	13.5	13.4	13.3	13.5	13.8	13.5	14.0	13.7	13.8	13.7
Mazar	Wheat flour (kg)	13.5	13.0	13.5	13.5	13.5	14.0	14.2	14.5	14.5	14.5	15.0	15.0
Faizabad	Wheat flour (kg)	16.0	16.0	14.0	17.0	15.7	17.0	16.0	17.0	16.0	16.5	15.7	16.0
Gardez	Wheat flour (kg)			13.2	13.4	13.4	12.8	13.0	13.0	13.0	13.0	13.0	13.5
Maimana	Wheat flour (kg)	15.0	15.0	16.0	16.0	16.0	17.0	17.0	16.0	15.0	15.0	15.0	15.0
Kabul	Bread (kg)	19.5	21.0	21.0	20.5	20.5	20.0	20.0	20.0	20.0	21.0	21.0	24.0
Kandahar	Bread (kg)	20.0	20.0	20.0	20.0	20.0	20.0	20.0	20.0	20.0	20.0	20.0	20.0
Jalalabad	Bread (kg)	17.6	17.6	17.6	17.6	17.6	17.6	17.6	17.6	17.6	17.6	17.6	17.6
Heart	Bread (kg)	20.0	20.0	20.0	20.0	20.0	20.0	20.0	20.0	20.0	20.0	20.0	20.0
Mazar	Bread (kg)	20.0	20.0	20.0	20.0	20.0	20.0	21.5	21.8	22.0	22.5	25.0	25.0
Faizabad	Bread (kg)	33.3	33.3	33.3	33.3	33.3	33.3	33.3	33.3	33.3	33.3	33.3	33.3
Gardez	Bread (kg)			24.0	24.0	24.0	24.0	24.0	24.0	24.0	24.0	24.0	24.0
Maimana	Bread (kg)	25.0	25.0	25.0	25.0	25.0	25.0	25.0	25.0	25.0	25.0	25.0	25.0

**Annex V**

**Weekly Market price of agricultural commodities/services**  
**[Source: Vulnerability Mapping Unit (VAM), WFP Afghanistan]**

Location	Commodity/Service	April, 06		May, 06				June, 06				July, 06	
		Week 3	Week 4	Week 1	Week 2	Week 3	Week 4	Week 1	Week 2	Week 3	Week 4	Week 1	Week 2
Kabul	Diesel/litre	29.0	31.0	31.0	31.0	30.0	30.0	30.0	30.0	30.0	31.0	31.0	32.0
Kandahar	Diesel/litre	26.0	28.0	28.0	29.0	29.0	29.0	27.5	27.5	27.5	27.0	27.0	29.0
Jalalabad	Diesel/litre	30.3	29.6	31.5	31.5	31.6	31.3	31.6	31.3	31.6	31.6	32.3	32.0
Heart	Diesel/litre	25.0	25.0	27.0	29.0	29.0	29.0	29.0	29.0	28.0	28.0	28.0	28.0
Mazar	Diesel/litre	29.0	30.0	29.0	29.0	29.0	30.0	32.0	31.0	31.0	30.0	30.0	30.0
Faizabad	Diesel/litre	33.0	36.0	35.0	35.0	35.0	35.0	34.0	34.0	34.0	34.0	33.0	35.0
Gardez	Diesel/litre			29.2	31.0	31.0	29.7	31.0	31.0	28.6	28.6	28.6	32.0
Maimana	Diesel/litre	28.0	28.0	29.0	28.0	28.0	28.0	28.0	28.0	26.0	28.0	27.0	27.0
Kabul	One-year female sheep, live	5,200	5,300	5,300	5,300	5,300	5,300	5,300	5,300	5,300	5,300	5,300	5,200
Kandahar	One-year female sheep, live	4,500	4,500	4,500	4,500	4,500	4,500	4,500	4,500	4,500	4,500	4,500	4,500
Jalalabad	One-year female sheep, live	4,000	4,066	4,000	4,100	4,100	4,066	4,133	4,066	4,066	4,066	4,033	4,100
Heart	One-year female sheep, live	3,500	3,500	3,500	3,560	3,550	3,500	3,500	3,450	3,400	3,400	3,350	3,330
Mazar	One-year female sheep, live	3,800	3,800	4,000	4,000	4,000	4,000	4,500	4,700	4,700	4,700	4,400	4,400
Faizabad	One-year female sheep, live	4,500	4,500	4,500	4,500	4,500	4,000	4,000	4,000	3,500	3,500	4,500	4,500
Gardez	One-year female sheep, live			4,300	4,400	4,400	4,500	4,600	4,600	4,600	4,600	4,600	4,550
Maimana	One-year female sheep, live	3,400	3,400	2,800	3,000	3,100	2,800	2,800	2,700	2,800	2,700	2,800	2,800
Kabul	Casual labour/day	180	180	180	180	180	180	180	180	180	180	180	180
Kandahar	Casual labour/day	170	170	170	170	170	170	170	170	170	170	170	170
Jalalabad	Casual labour/day	140	140	150	143	147	140	140	140	140	140	143	143
Heart	Casual labour/day	170	170	170	170	170	170	170	170	170	170	170	170
Mazar	Casual labour/day	170	170	170	170	170	170	175	170	170	170	140	140
Faizabad	Casual labour/day	200	200	200	200	200	200	200	200	200	250	250	250
Gardez	Casual labour/day			185	190	190	200	200	200	200	200	200	200
Maimana	Casual labour/day	170	170	180	170	170	160	170	170	190	180	190	190