



دکرهڼی ، اوبولگولو او مالدارۍ وزارت
وزارت زراعت ، آبیاری و مالدارۍ

دافغانستان اسلامي جمهوریت
جمهوری اسلامی افغانستان

Islamic Republic of Afghanistan
Ministry of Agriculture, Irrigation and Livestock



نشریه قیمت های محصولات زراعتی

(سال 5 : شماره 11)

Agricultural Commodity Price Bulletin

(Year 5 : Volume 11)

Ministry of Agriculture, Irrigation and Livestock
General Department of Policy and Planning
Marketing, Economics and Statistics Division

Kabul, 17 November 2009



Abbreviations

DAP	Diammonium Phosphate
EC	European Commission
FAAHM	Food, Agriculture and Animal Husbandry Information Management Unit
FAO	Food and Agriculture Organization of the United Nations
MAIL	Ministry of Agriculture, Irrigation and Livestock
USDA	United States Department of Agriculture
WFP	World Food Program

Contact us

Comments on this bulletin are welcome. Contact us at:

Haqiqatpal Ghulam Rabbani, Director, Statistics and Marketing Information Office, MAIL

Rabani.Haqiqatpal@gmail.com

Mobile: +93(0)700 284 879

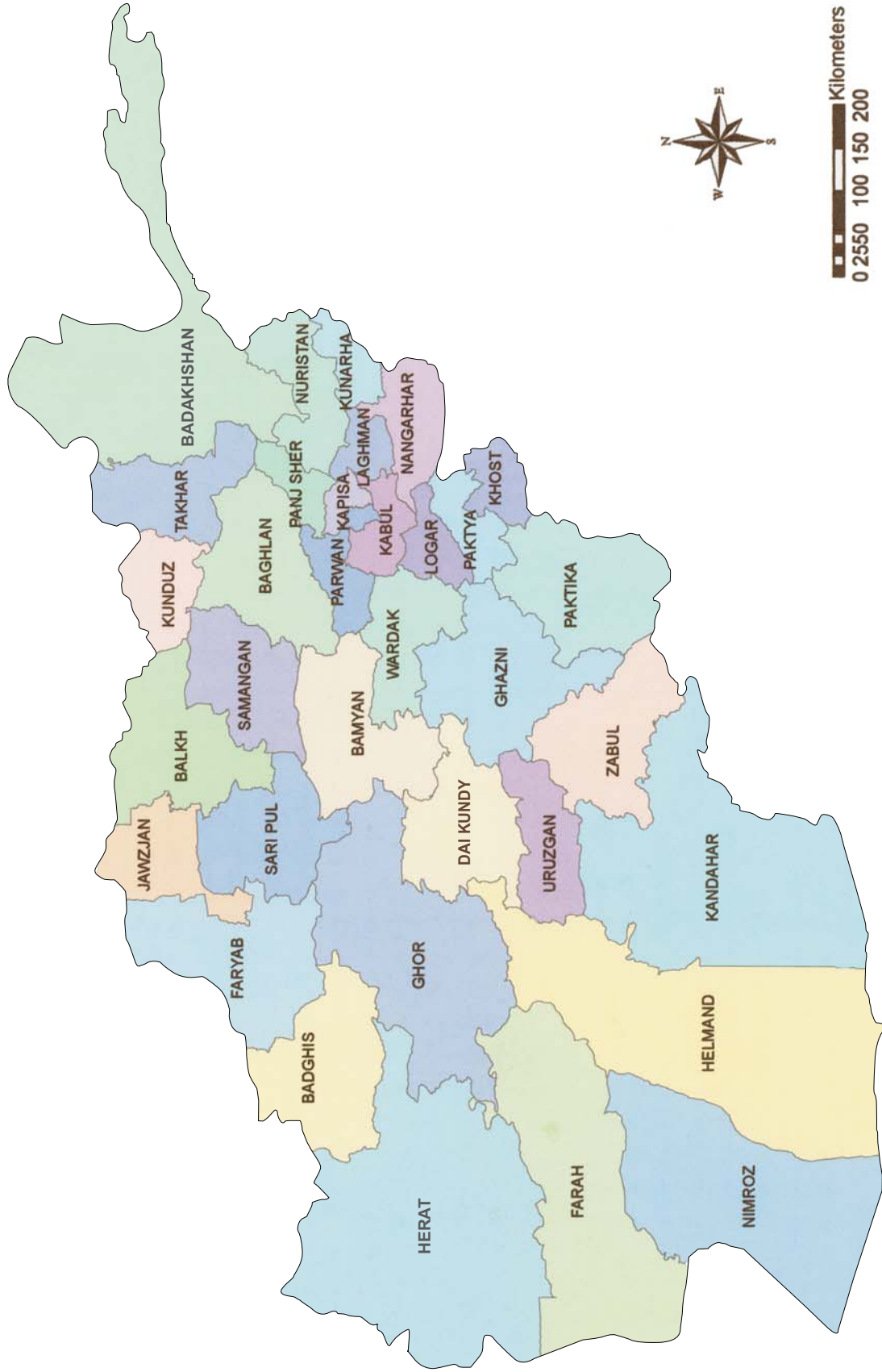


**“Support to FAAHM in Developing an Agricultural Statistics and Market Information System”
(GCP/AFG/042/EC)**

The FAO project mentioned above provides technical guidance and financial support for the publication of this bulletin. The project is funded by the European Commission.

*FAAHM bulletins and reports are available at:
<http://www.mail.gov.af/m/english/English.htm>
http://www.fao.org/world/afghanistan/agteo_en.htm*

MAP OF AFGHANISTAN



Kilometers
0 25 50 100 150 200

Source: Central Statistics Office

CONTENTS

Map of Afghanistan

Summary Table 1: Commodity retail market prices (Afs/Kg.) in October 2009

Summary Table 2: Retail market prices of wheat, beef and mutton in November 09

Summary Table 3: Wholesale price (Rs.) of wheat and wheat flour in Peshawar in July-September 09

Summary Table 4: fob prices of wheat in 2009

1.	Consumer Price Index (CPI).....	1
2.	Price of agricultural commodities.....	3
2.1.	Price of wheat.....	3
2.2.	Price of fruits and vegetables.....	6
2.3.	Price of livestock and livestock products.....	6
2.4.	Cost of agricultural labour, casual labour and fertilizer.....	7

Annexes

Annex I: Consumer Price Index (CPI) by location (October 2008 - October 2009)

Annex II: National Consumer Price Index (CPI) by item (October 2008 - October 2009)

Annex III: Kabul Consumer Price Index (October 2008 - October 2009)

Annex IV: Retail market price of agricultural commodities in provincial centers in October 2009

Annex V: Retail market prices of selected agricultural commodities in Wk 2; November 2009

Annex VI: Agricultural commodity Prices in border towns in October 2009

Annex VII: Weekly retail market prices of fruits and vegetables in Kabul, Kunduz, Herat, Kandahar and Jalalabad in October/November 09

Annex VIII: Weekly market price of agricultural commodities/services (August 09 – Wk 1; November 09)

Annex IX: Monthly price of wheat on global markets (January 2004-November 2009)

Summary Table 1: Agricultural commodity retail market prices (Afs/Kg.) in October 2009

Commodity	Region	Reporting month	Last month	Last year same month	% change on	
					Last month	Last year same month
		(i.e. Oct 09)	(Sep 09)	(Oct 08)	(Sep 09)	(Oct 08)
Wheat	North	15.4	15.4	29.4	--	-47.6
Wheat	North-East	15.3	14.3	31.5	7.0	-51.6
Wheat	West	14.7	13.3	30.7	10.0	-52.2
Wheat	West-Central	16.5	17.5	33.0	-5.7	-50.0
Wheat	Central	17.7	17.0	30.8	3.9	-42.6
Wheat	South	17.8	17.3	30.0	2.9	-40.8
Wheat	East	17.5	18.5	29.8	-5.4	-41.2
Wheat	South-West	17.0	17.8	31.7	-4.7	-46.3
Wheat	Overall	16.6	16.5	30.7	0.5	-46.0
Beef	Overall	149.9	148.1	129.8	1.2	15.4
Mutton	Overall	197.6	196.0	182.0	0.8	8.5
Chicken	Overall	112.8	106.5	104.9	5.9	7.6
Agri. Labor	Overall	228.8	222.0	199.4	3.1	14.8
Urea	Overall	18.7	17.0	18.8	10.1	-0.4
DAP	Overall	33.6	33.4	50.7	0.5	-33.7

Summary Table 2: Price of wheat, beef and mutton on 13 November 09

Commodity	Region	Price (Afs/kg)		
		Wheat	Beef	Mutton
Wheat	North	14.5	168.0	208.0
Wheat	North-East	15.0	152.5	195.0
Wheat	West	14.3	160.0	223.3
Wheat	West-Central	17.0	150.0	175.0
Wheat	Central	16.6	143.3	200.0
Wheat	South	17.8	132.5	186.5
Wheat	East	18.4	139.0	177.5
Wheat	South-West	16.8	155.8	205.0
Wheat	Overall	16.3	150.3	197.8

Summary Table 3: Wholesale price (Rs.) of wheat in Peshawar (July-September 09)

Commodity	Quantity	Jul 09	Aug 09	Sep 09	Oct 09
Wheat	40 kg	947	871	917	NA
Wheat flour	40 kg	1,027	1,106	1,111	NA

Summary Table 4: Price of wheat in the international market, 2009

Description	Wheat fob prices (US\$/tonne)		
	Argentina up river	US Hard Red Winter (HRW)	US Soft Red Winter (SRW)
Average price in 2009	216.64	236.18	182.91
% change on 2008	-23.0	-31.5	-31.9

Agricultural Commodity Price Bulletin
(Year 5: Volume 11)

1. Consumer Price Index (CPI)

National Consumer Price Index (CPI)¹ in October 2009 was 29.8 percent points lower than in October 2008. The annual drop in the national food index was 48.6 percent points, which was mainly due to fall in the price of wheat in local markets. Among food items, annual drop in the “Bread and Cereals” index was 102.3 percent points.

The non-food index showed no change. Annual decrease in exchange-rate index was 3.9 per cent point. (Table 1/Annex I&II)

Table 1: CPI in October 2009 compared to CPIs in October 2008 and September 2009

Description	Percent point change in October 09 CPI	
	On Oct 2008	On Sep 2009
	(Last year)	(Last month)
OVERALL INDEX	-29.8	1.5
Food Index	-48.6	1.9
Bread and cereals	-102.3	5.1
Meat	8.3	2.7
Milk, cheese and eggs	-1.9	-0.2
Oils and fats	-37.8	1.3
Fresh and dried fruits	8.8	-7.8
Vegetables including tubers	-16.4	-1.9
Sugar and sweets	17.6	-3.2
Spices	6.0	0.4
Non-alcoholic beverages	7.2	2.4
Cigarettes and tobacco	15.4	0.8
Non-food Index	--	0.9
Exchange rate Index	-3.9	-0.1

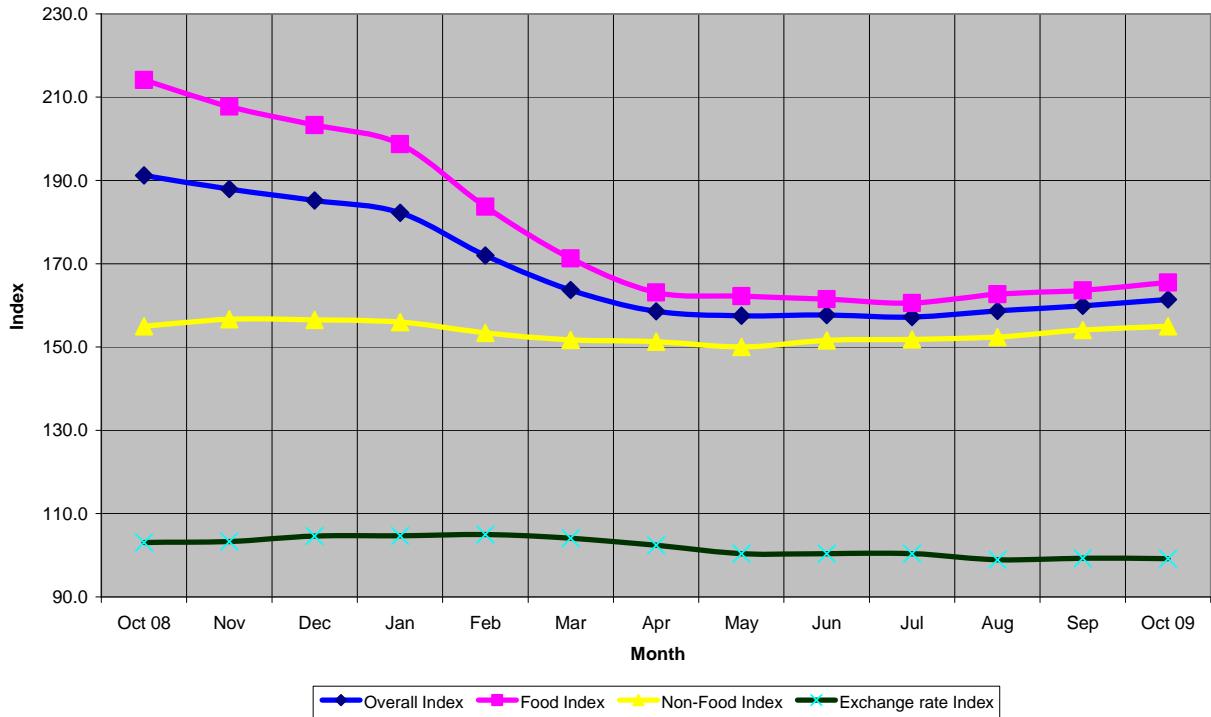
Source: Central Statistics Organization (CSO)

There was 48.6% fall in the price index of food items in October 09 compared to October 08. Annual changes in the food indexes were as follows: Bread and cereals (-102.3 percent points); Oil and fats (-37.8); vegetables including tubers (-16.4); Milk, cheese and eggs (-1.9); Spices (+6.0 percent points); Non-alcoholic beverages (+7.2); Meat (+8.3); Fresh and dry fruits (+8.8); Cigarettes and tobacco (+15.4) and Sugar and sweets (+17.6). (Table 1)

Overall CPI increased by 1.5 percent point from September to October 2009, with increases in the food and non-food indexes by 1.9 and 0.9 percent points. “Bread and cereal” index showed 5.1% increase in that period. (Table 1/Annex II)

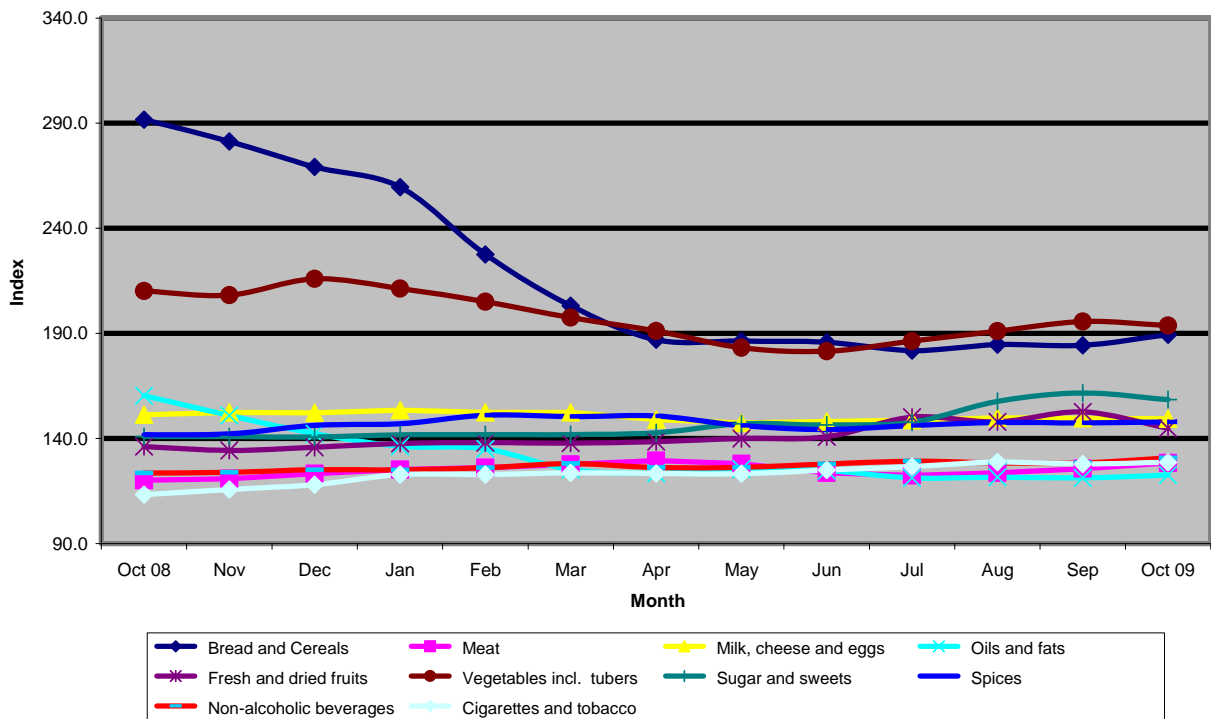
¹ Consumer Price Index (CPI) is an index of the price of consumer goods and services. It can be used to measure the rate of inflation or the cost of living.

National Consumer Price Index, October 2008 to October 2009
 [March 2004=100]



Source: Central Statistics Office

National Food Price Indexes, October 2008 to October 2009
 (March 2004 = 100)



Source: Central Statistics Office

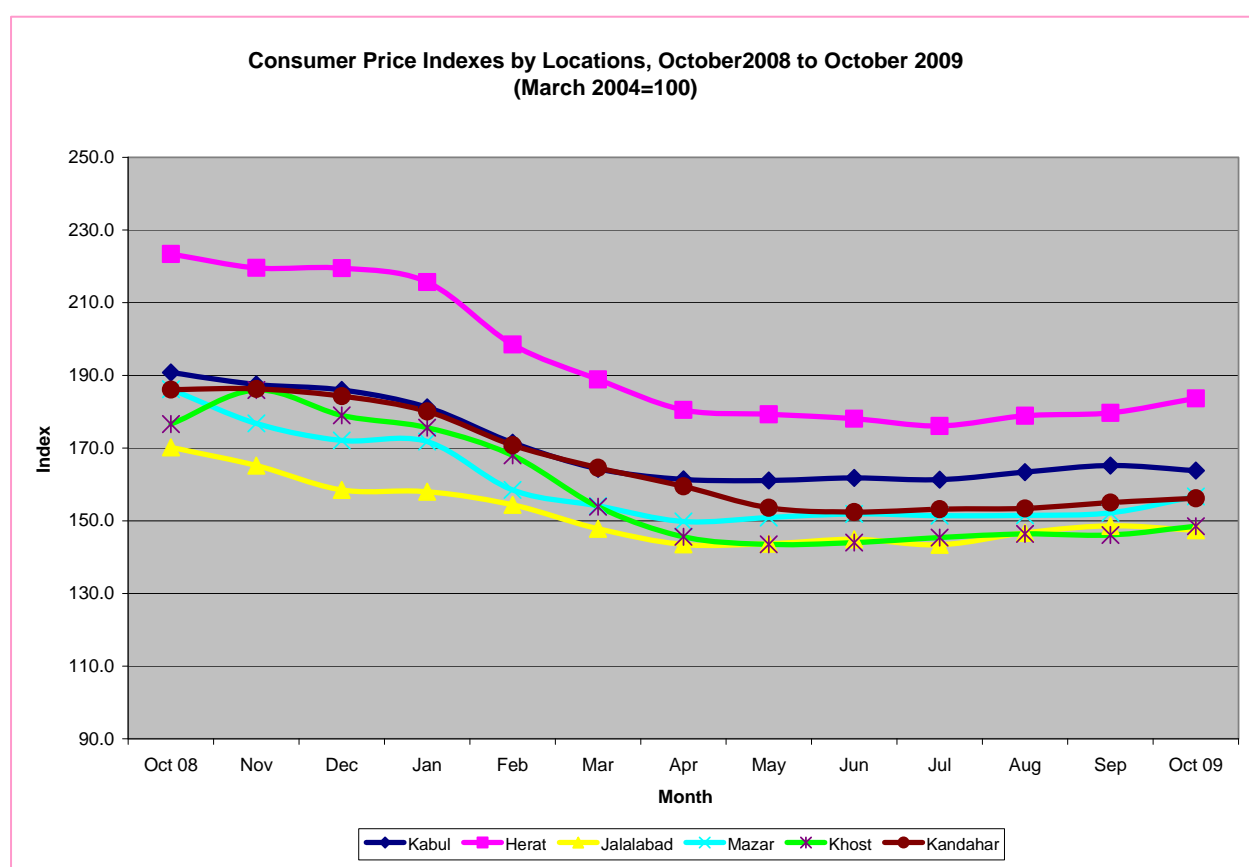
Of the six locations with CPI data, the highest four annual drops in CPI in October 09 were observed in Herat (39.7 percent points), Kandahar (29.9), Mazar (29.5) and Khost (28.1). These decreases were

mainly due to drop in wheat prices. The highest annual falls in the food indexes were reported from Herat (63.7), Mazar (48.1) and Kandahar (47.6). There was not much monthly/annual changes in CPI of non-food items in the reporting month, except in the case of Jalalabad (annual +10.1%) and Khost (annual -6.1%). (Table 2/Annex I/II)

Table 2: CPI in October 2009 compared to CPIs in October 2008 and September 2009

Location	% points change					
	Overall Index		Food Index		Non-Food Index	
	On Oct 08	On Sep 09	On Oct 08	On Sep 09	On Oct 08	On Sep 09
National	-29.8	1.5	-48.6	1.9	0.0	0.9
Kabul	-27.0	-1.4	-44.3	-2.8	0.5	0.8
Herat	-39.7	4.0	-63.7	5.7	-1.5	1.4
Jalalabad	-22.8	-1.2	-43.6	-2.2	10.1	0.2
Mazar	-29.5	4.5	-48.1	7.7	-0.2	-0.5
Khost	-28.1	2.4	-41.9	2.9	-6.1	1.8
Kandahar	-29.9	1.2	-47.6	0.4	-2.0	2.3

Source: Central Statistics Office



Source: Central Statistics Office

2. Price of agricultural commodities

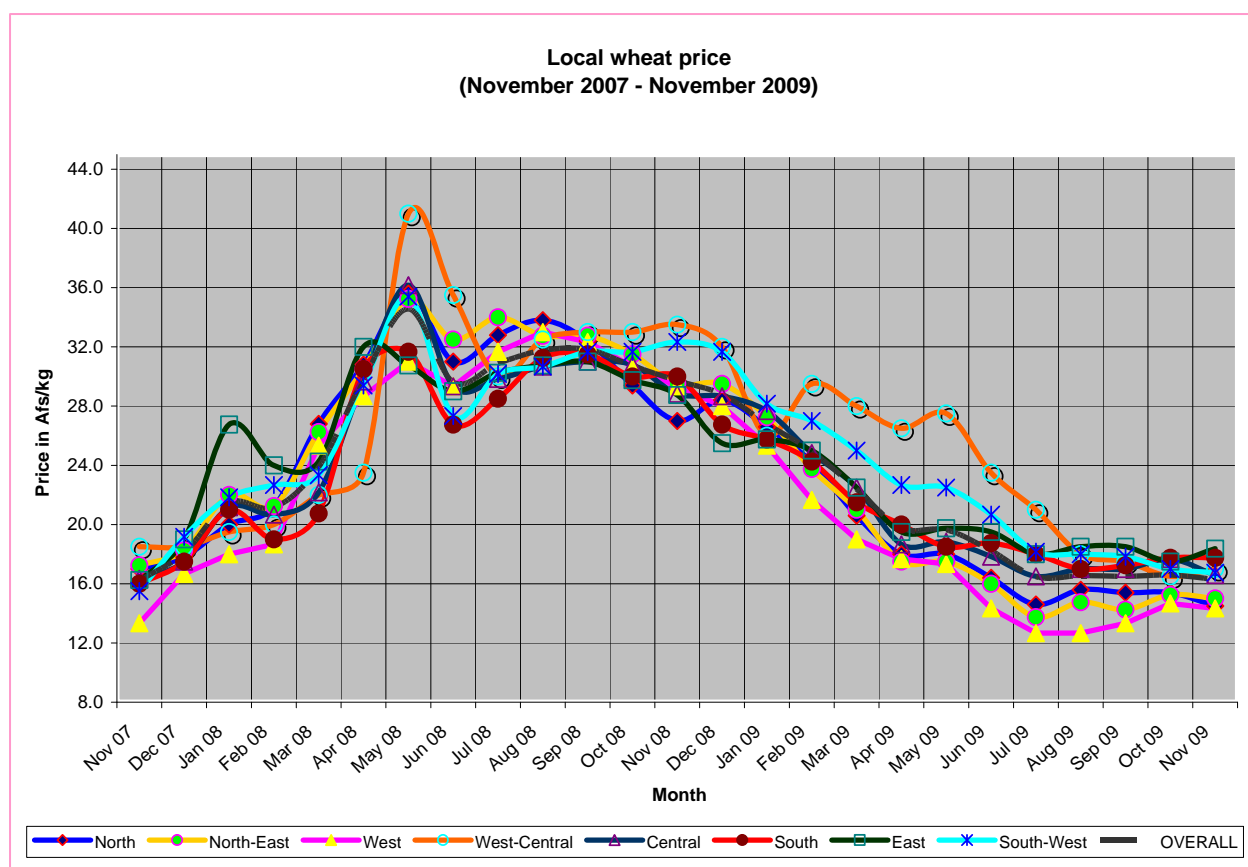
2.1. Price of wheat

The national average price of wheat in October is Afs 16.6 Afs/kg with a monthly increase of 0.5% and annual decrease of 46% in its price. The price of local wheat has stabilized since early July 2009, although there was some sign of increase in its price in early October. The average price of wheat in July was Afs 16.5/kg, which was 9.3% lower than its price in June. Its price in August 09 (Afs 16.6/kg) was

almost equal to its price in July 09. Weekly market prices of wheat in nine markets reported by WFP for the past three months are shown on Annex: Page 10.

Table 3: Price of local wheat (Afs/Kg) (Source: FAAHM)

Region	Oct 2008	Sep 2009	Oct 2009	Nov 2009	% Change in price in Oct 09	
	(Afs)	(Afs)	(Afs)	(Afs)	On Sep 09 (Last month)	On Oct 08 (Last year same month)
North	29.4	15.4	15.4	14.5	--	-47.6
North-East	31.5	14.3	15.3	15.0	7.0	-51.6
West	30.7	13.3	14.7	14.3	10.0	-52.2
West-Central	33.0	17.5	16.5	17.0	-5.7	-50.0
Central	30.8	17.0	17.7	16.6	3.9	-42.6
South	30.0	17.3	17.8	17.8	2.9	-40.8
East	29.8	18.5	17.5	18.4	-5.4	-41.2
South-West	31.7	17.8	17.0	16.8	-4.7	-46.3
Overall	30.7	16.5	16.6	16.3	0.5	-46.0

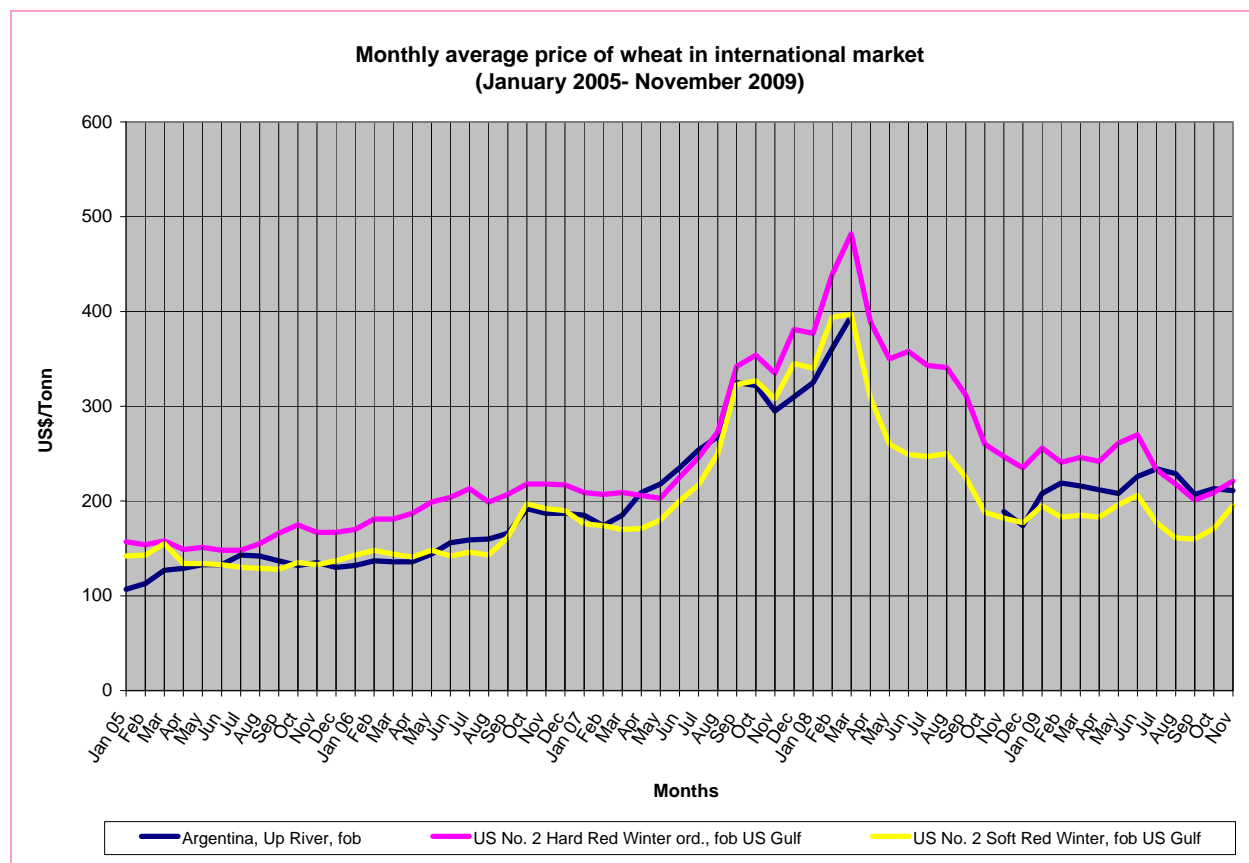


In Peshawar (Pakistan) the wholesale price of wheat flour in September was 5.3% higher than in August.

Table 4: Wholesale wheat and wheat flour prices (Rs.) in Peshawar in July-September 09²

Commodity	Quantity	Price	Jul	Aug	Sep	% change in Jul-Aug 09	% change in Aug-Sep 09
Wheat	40 kg	Rs.	947	871	917	-8%	+5.3%
Wheat flour	40 kg	Rs.	1027	1106	1,111	7.7%	--

The international wheat price trend shows an increasing tendency in November 09. A downward trend in the price of local wheat from October 08 to August 09 mirrored its negative trend in the global markets. The price of wheat (US No. 2 Hard Red Winter and US No. 2 Soft Red Winter) in the global market showed a generally downward trend from March 2008, with drops by 8.5% to 10% in September; 12% to 17% in October; 3% to 8% in November/December. This was followed by a slight rise in its price in January. The price virtually stabilized February through May. In June there was some increase in the price, but it slumped again in July. (Graph below; Annex IX)



Annual trend of wheat price on global markets showed a consistently increasing movement from 2005-2008. The highest annual increase in its price was seen in 2007. Compared to its price in 2005, the price in 2008 was almost double, on average. However, the price of wheat in 2009 in the international market is lower by about 22 to 32% than in 2008. (Table 5)

²Source: Government of Pakistan, Department of Agricultural and Livestock Products Marketing and Grading

Table 5: Price of wheat on global markets, 2005-2009

Year	Description	Wheat fob prices (US\$/tonne)		
		Argentina up river	US Hard Red Winter	US Soft Red Winter
2004	Average price	138.12	161.31	145.27
2005	Average price	130.44	157.81	135.93
2006	Average price	157.67	199.65	158.15
	% change on 2005	20.9	26.5	16.3
2007	Average price	246.59	263.8	234.76
	% change on 2006	56.4	32.1	48.4
2008	Average price	281.21	344.58	268.59
	% change on 2007	14.0	30.6	14.4
2009	Average price up to November 2009	216.64	236.18	182.91
	% change on 2008	-23.0	-31.5	-31.9

Source: International Grain Council and USDA

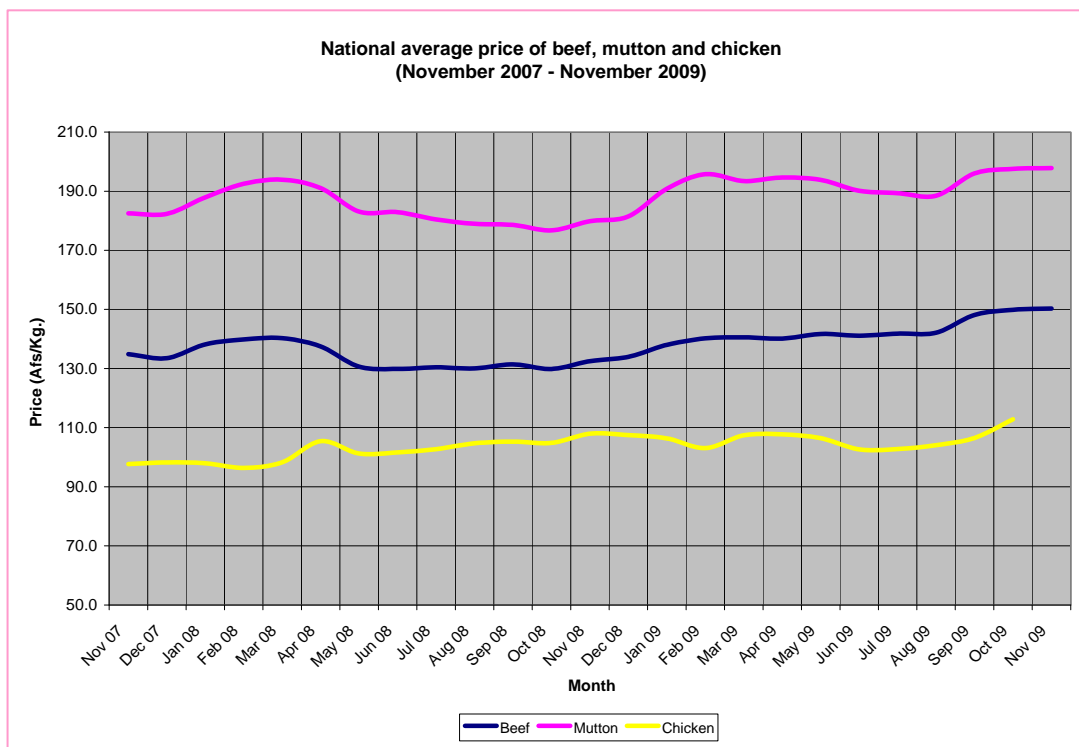
Market prices of various commodities for the following border markets in October 2009 are shown in Annex VI: Herat, Islam Qala and Torghondi; Kunduz: Shirkhan; Balkh: Hairatan; Nangarhar: Torkhan.

2.2. Price of fruits and vegetables

Prices of various types of fruits and vegetables in Kabul, Kunduz, Herat, Kandahar and Jalalabad markets in October and November 09 are presented in Annex VII.

2.3. Price of livestock and livestock products

Meat prices show an increasing trend in the past month. The national average prices of meat were: beef Afs 150/kg (15.4% up compared to last year), mutton/lamb 198/kg (8.5% up), and chicken Afs 113/kg (7.6% up). (Summary Table 1/2)



2.4. Cost of agricultural labour, casual labour and fertilizer³

The average cost of agricultural labor in October 09 was Afs 229/day, which is about 3% higher than in September 09. Nominal increase in price of inputs was seen. The average prices of the best quality, imported urea and DAP were Afs 18.7 (up 10%) and Afs 33.6/kg (up .5%) in October 09. (Summary Table 1 and Annex IV)

³ Price per bag expressed in Afs/kg

Annex I: Consumer Price Index (CPI) for October 2008 - October 2009 by location

(March 2004 = 100)

	Oct 2008	Nov 2008	Dec 2008	Jan 2009	Feb 2009	Mar 2009	Apr 2009	May 2009	Jun 2009	Jul 2009	Aug 2009	Sep 2009	Oct 2009
National													
Overall Index	191.2	187.9	185.2	182.2	172.0	163.7	158.6	157.5	157.7	157.2	158.7	159.9	161.4
- Food	214.1	207.7	203.3	198.7	183.7	171.3	163.1	162.2	161.5	160.6	162.7	163.6	165.5
- Non-Food	155.0	156.7	156.5	156.0	153.4	151.7	151.3	150.0	151.6	151.8	152.4	154.1	155.0
Kabul													
Overall Index	190.8	187.5	186.0	181.2	171.5	164.3	161.4	161.1	161.8	161.3	163.4	165.2	163.8
- Food	207.0	200.0	197.9	190.6	177.2	165.9	161.9	162.0	161.7	161.2	163.7	165.5	162.7
- Non-Food	165.0	167.7	157.2	166.4	162.3	161.7	160.6	159.6	162.0	161.4	162.9	164.7	65.5
Herat													
Overall Index	223.4	219.6	219.5	215.7	198.5	188.9	180.5	179.3	178.1	176.1	178.9	179.7	183.7
- Food	261.5	255.0	251.5	245.7	221.2	207.4	193.8	192.1	189.9	186.9	191.0	192.1	197.8
- Non-Food	162.9	163.4	169.0	168.1	162.4	159.5	159.4	159.1	159.2	158.6	159.8	160.0	161.4
Jalalabad													
Overall Index	170.2	165.2	158.5	158.0	154.4	147.8	143.5	143.7	144.9	143.4	146.7	148.6	147.4
- Food	190.0	179.9	157.8	166.0	160.4	150.1	144.1	145.5	146.6	144.4	149.3	148.6	146.4
- Non-Food	138.9	141.8	143.7	145.3	145.0	144.1	142.5	140.8	142.2	141.8	142.6	148.8	149.0
Mazar													
Overall Index	186.2	176.8	172.1	171.8	158.5	154.1	149.8	150.9	151.9	151.4	151.5	152.2	156.7
- Food	213.6	198.1	191.5	192.4	171.6	165.9	157.8	160.2	160.4	158.0	157.6	157.8	165.5
- Non-Food	142.9	143.0	141.1	139.0	137.7	135.4	137.1	136.1	138.3	141.1	141.7	143.2	142.7
Khost													
Overall Index	176.6	186.0	179.0	175.6	168.0	153.9	145.6	143.5	144.0	145.4	146.4	146.1	148.5
- Food	189.7	204.7	192.5	188.1	157.7	155.9	143.4	141.6	141.7	144.5	146.0	144.9	147.8
- Non-Food	155.8	156.2	157.6	155.9	155.9	150.7	149.2	146.6	147.5	146.8	147.0	147.9	149.7
Kadahar													
Overall Index	186.1	186.3	184.3	180.1	170.8	164.6	159.5	153.6	152.4	153.2	153.4	155.0	156.2
- Food	206.2	206.2	205.7	197.5	182.9	172.5	164.6	156.2	153.6	154.8	155.8	158.2	158.6
- Non-Food	154.4	154.7	150.4	152.5	151.6	152.1	151.6	149.4	150.5	150.5	149.8	150.1	152.4

Source: Central Statistics Office

Annex II: National Consumer Price Index (CPI) for October 2008 - October 2009 by item
(March 2004 = 100)

	Weight	Oct 2008	Nov 2008	Dec 2008	Jan 2009	Feb 2009	Mar 2009	Apr 2009	May 2009	Jun 2009	Jul 2009	Aug 2009	Sep 2009	Oct 2009
Overall Index	100.0	191.2	187.9	185.2	182.2	172.0	163.7	158.6	157.5	157.7	157.2	158.7	159.9	161.4
Food	61.3	214.1	207.7	203.3	198.7	183.7	171.3	163.1	162.2	161.5	160.6	162.7	163.6	165.5
Bread and Cereals	28.0	291.7	281.3	269.2	259.6	227.6	203.2	187.0	186.3	185.8	181.8	184.7	184.3	189.4
Meat	6.0	120.1	120.9	123.3	125.2	126.2	127.7	129.5	128.0	123.7	122.4	123.7	125.7	128.4
Milk, cheese and eggs	5.6	151.3	152.4	152.2	153.5	152.5	152.5	149.0	147.4	148.1	148.7	149.8	149.6	149.4
Oils and fats	5.3	160.4	151.0	142.3	136.3	135.1	125.2	123.5	125.5	124.7	121.3	121.6	121.3	122.6
Fresh and dried fruits	4.9	136.1	134.3	135.8	137.7	138.0	137.8	138.5	140.0	140.8	150.1	148.0	152.7	144.9
Vegetables incl. tubers	4.9	210.2	208.2	215.9	211.3	205.1	197.5	191.2	183.2	181.5	186.3	191.0	195.7	193.8
Sugar and sweets	1.8	140.9	140.9	140.7	141.8	141.9	141.9	142.7	147.0	146.5	147.7	157.7	161.7	158.5
Spices	1.1	141.8	142.2	146.3	147.0	151.1	150.5	150.7	146.2	144.3	146.2	147.6	147.4	147.8
Non-alcoholic beverages	2.0	123.6	123.9	125.1	125.0	126.1	128.1	126.2	126.3	127.9	129.2	128.4	128.4	130.8
Cigarettes and tobacco	1.7	113.3	115.7	118.0	122.8	122.8	123.7	123.4	123.3	125.0	126.6	128.8	127.9	128.7
Non-Food	38.7	155.0	156.7	156.5	156.0	153.4	151.7	151.3	150.0	151.6	151.8	152.4	154.1	155.0
Clothing	7.2	119.9	122.1	125.1	125.2	125.2	126.9	128.3	126.0	125.5	124.8	124.8	125.9	126.3
Housing	17.2	175.7	176.4	175.7	175.4	172.1	167.6	166.8	165.5	168.0	168.9	170.1	173.2	174.2
- Rent	7.1	160.5	160.0	160.5	161.1	162.1	158.9	159.9	158.7	159.0	162.3	163.8	168.0	169.3
-Construction material	3.2	136.5	133.2	134.2	133.5	132.0	132.1	131.7	131.6	131.5	129.9	130.2	129.3	127.8
-Electricity and fuels	6.8	210.1	214.0	211.4	210.1	201.6	193.5	190.7	188.7	194.7	194.3	195.7	199.4	201.3
Household goods	7.0	120.4	120.2	121.3	121.8	122.5	122.5	123.1	122.7	122.3	122.8	123.4	123.7	123.7
Health	2.0	155.8	158.0	160.4	165.1	162.6	167.0	166.7	166.8	164.6	162.9	163.4	162.5	163.7
Transportation	2.3	256.4	263.5	254.0	240.4	222.1	217.1	209.6	20.8	217.3	216.6	215.2	215.9	221.7
Communication	0.9	108.6	108.6	108.6	108.6	108.6	108.6	109.4	109.4	109.9	109.9	109.9	109.9	109.9
Education	1.2	161.1	107.4	108.3	108.9	109.1	109.2	109.2	108.4	110.2	109.7	109.6	109.7	109.6
Miscellaneous	0.9	162.0	162.3	168.7	171.5	171.8	172.5	176.4	176.4	175.3	175.0	174.9	179.9	180.0
Exchange rate Index		103.1	103.3	104.6	104.7	105.0	104.1	102.4	100.4	100.4	100.4	98.9	99.3	99.2

Source: Central Statistics Office

Annex III: Kabul Consumer Price Index for October 2008 - October 2009
(March 2004 = 100)

	Oct 2008	Nov 2008	Dec 2008	Jan 2009	Feb 2009	Mar 2009	Apr 2009	May 2009	Jun 2009	Jul 2009	Aug 2009	Sep 2009	Oct 2009
Overall Index	190.7	187.5	186.0	181.2	171.5	164.3	161.4	161.1	161.8	161.3	163.4	165.2	163.8
Monthly % Change													
Food	207.0	200.0	197.9	190.6	177.2	165.9	161.9	162.0	161.7	161.2	163.7	165.5	162.7
Bread and Cereals	269.6	256.7	252.6	235.5	207.1	184.2	178.5	179.0	177.8	176.3	177.5	177.1	174.2
Meat	130.3	130.3	131.6	131.2	131.1	130.3	130.2	130.6	129.4	127.3	126.5	128.0	128.0
Milk, cheese and eggs	154.9	158.6	156.7	157.5	157.6	161.0	156.3	151.8	150.8	150.5	154.1	156.5	157.4
Oils and fats	162.3	152.3	147.0	148.8	144.3	141.7	135.9	136.1	138.5	137.8	137.7	138.3	138.4
Fresh and dried fruits	155.3	153.5	153.6	155.0	156.9	157.6	156.5	156.8	159.7	160.1	169.3	175.0	162.8
Vegetables incl. tubers	201.6	197.1	198.8	201.7	198.5	189.0	183.0	184.8	183.9	187.1	193.3	204.2	198.7
Sugar and sweets	148.7	148.9	146.8	150.1	149.6	148.0	149.6	154.8	156.5	156.3	171.1	175.6	171.0
Spices	166.8	164.2	169.1	164.1	167.2	164.9	165.0	165.0	165.3	172.4	172.6	173.4	173.4
Non-alcoholic beverages	131.8	129.8	132.0	132.2	130.6	129.1	129.1	126.8	129.3	130.9	131.2	132.8	133.5
Cigarettes and tobacco	103.7	103.7	105.5	105.2	105.7	106.2	106.7	105.9	105.7	105.7	107.1	106.4	106.1
Non-Food	164.8	167.6	167.0	166.4	162.3	161.7	160.6	159.6	133.2	161.4	162.9	164.7	165.5
Clothing	133.0	132.8	133.9	134.0	134.5	134.3	133.5	133.4	186.3	133.0	134.2	137.4	136.2
Housing	189.3	195.0	195.2	194.2	187.2	185.4	184.1	182.8	178.2	185.1	187.1	188.9	190.4
- Rent	175.1	175.1	175.9	177.1	177.2	177.2	177.6	178.1	134.5	178.9	180.0	182.2	184.7
-Construction material	153.2	142.7	144.2	142.0	137.1	136.2	135.6	133.7	219.2	129.6	131.0	129.4	128.0
-Electricity and fuels	221.4	240.4	239.5	237.0	221.3	217.2	214.0	210.9	120.0	217.7	221.2	224.1	225.9
Household goods	119.1	119.0	118.5	119.7	120.2	119.7	119.6	119.8	193.2	120.2	120.8	121.4	121.8
Health	181.4	181.4	183.5	185.6	183.6	192.1	193.0	192.6	214.5	193.0	193.1	193.3	193.5
Transportation	255.5	260.0	244.3	232.6	216.5	212.9	206.1	200.1	100.0	212.7	217.7	220.3	225.2
Communication	100.0	100.0	100.0	100.0	100.0	100.0	100.0	100.0	100.4	100.0	100.0	100.0	100.0
Education	99.9	100.0	99.8	100.0	100.0	99.9	100.3	100.2	200.1	100.1	100.0	100.2	100.2
Miscellaneous	188.8	190.7	195.0	199.1	200.1	202.0	200.1	200.1	100.4	200.1	200.1	204.7	205.2

Source: Central Statistics Office

Annex IV: Retail market price of agricultural commodities in provincial centers in October 2009 (Source: FAAHM)

SN	Region	Province	Wheat Local (Afs/kg)	Wheat Flour imported (Afs/kg)	Rice local (Afs/kg)	Rice imported (Afs/kg)	Maize (Afs/kg)	Mungbeans (Afs/kg)	Pea (Afs/kg)	Potato (Afs/kg)
1	North	Faryab	17	21	38	50	13	25	35	18
2	North	Juzjan	15	20	47	55	13	35	50	15
3	North	Sar-i-Pul	15	21	35	60	9	25	40	15
4	North	Balkh	15	20	40	55	15	25	44	14
5	North	Samangan	15	20	32	50	12	40	45	16
6	North-East	Bughlan	16	22	32	50	11	25	55	13
7	North-East	Kunduz	14	21	33	54	11	19	50	14
8	North-East	Takhar	16	20	43	57	11	22	43	16
9	North-East	Badakhshan	15	21	38	60	22	17	46	16
10	West	Heart	12	21	50	50	25	25	50	14
11	West	Farah	15	23	45	68	25	20	45	18
12	West	Badghis	17	22	33	60	10	35	45	15
13	West-Central	Ghor	17	21		70		45	60	20
14	West-Central	Bamyan	16	22		79	25	27	35	15
15	Central	Kabul	16	21	49	59	13	29	52	13
16	Central	Parwan	20	22	31	55	14	35	50	16
17	Central	Panjsheer	18	23	42	60	12	20	55	15
18	Central	Kapisa	18	25	57	57	11	25	54	11
19	Central	Logar	17	22	38	65	13	32	50	15
20	Central	Wardak	17	23	43	65	17	35	60	14
21	South	Paktya	17	19	32	65	15	33	48	14
22	South	Paktika	18	16	56	70	15	31	60	10
23	South	Khost	17	22	30	60	9	27	30	16
24	South	Ghazni	19	22	42	60	15	30	40	14
25	East	Nangarhar	15	20	21	51	12	31	61	13
26	East	Laghman	17	20	20	44	11	29	47	12
27	East	Kunarha	17	22	23	48	12	30	42	13
28	East	Nooristan	21	36	34	85	10	26	57	12
29	South-West	Kandahar	17	24	33	52	13	33	50	11
30	South-West	Helmand	15	21	28	64	11	31	42	11
31	South-West	Zabul	17	22	65	32	14	35	55	9
32	South-West	Nimroz	14	22		65	13	35	60	20
33	South-West	Uruzgan	17	19	32	95	11	42	46	15
34	South-West	Daikunde	22	22		100	17	34	39	12

Annex IV: Retail market price of agricultural commodities in provincial centers in October 2009 (Source: FAAHM)

SN	Region	Province	Vegetable oil (Afs/litre)	Milk (Afs/litre)	Beef (Afs/kg)	Mutton (Afs/kg)	Veal (Afs/kg)	Chicken Imported (Afs/kg)	Imported Urea best quality (Afs/kg)	DAP best quality (Afs/kg)
1	North	Faryab	60	30	170	220	190	100	20	28
2	North	Juzjan	58	25	170	220	200	100		
3	North	Sar-i-Pul	50	15	160	200	180	95	15	36
4	North	Balkh	55	20	170	210	180	110	17	37
5	North	Samangan	55	20	170	200	180	140	18	38
6	North-East	Bughlan	60	30	160	200	180	120	17	32
7	North-East	Kunduz	54	20	150	200	170	100	14	30
8	North-East	Takhar	95	24	130	170	150	95	19	17
9	North-East	Badakhshan	90	30	130	180	150	120	22	27
10	West	Heart	55	30	160	240	200	95	15	32
11	West	Farah	70	25	160	200	160	110	20	29
12	West	Badghis	55	20	140	200	170		25	25
13	West-Central	Ghor	60		150	180	160	100	15	
14	West-Central	Bamyan	70	35	150	170	150	140	19	35
15	Central	Kabul	50	30	135	200	170	110	13	30
16	Central	Parwan	55	20	150	200	170	110	15	26
17	Central	Panjshेर	52		150	200	180	140	28	40
18	Central	Kapisa	60	27	150	200	180	110	17	47
19	Central	Logar	65	25	180	200	190	130	15	31
20	Central	Wardak	60	22	140	200	160	110	14	35
21	South	Paktya	60	20	135	185		140	17	32
22	South	Paktika	48		125	200	150	135	16	35
23	South	Khost	30	60	126	162		111	13	27
24	South	Ghazni	60	20	140	200	170		17	28
25	East	Nangarhar	53	24	131	208	140	107	21	26
26	East	Laghman	55	24	131	177	140	130	13	27
27	East	Kunarha	51	35	136	150	137	120	16	36
28	East	Nooristan	65		157	180	170	125	30	40
29	South-West	Kandahar	62	30	165	225		110	13	27
30	South-West	Helmand	65	27	150	200	170	95	13	34
31	South-West	Zabul	58	26	135	200		90	26	36
32	South-West	Nimroz	60	45	150	220	180	100	19	38
33	South-West	Uruzgan	55		180	220	180	100	38	56
34	South-West	Daikunde	65		160	200	160		27	59

Annex IV: Retail market price of agricultural commodities in provincial centers in October 2009 (Source: FAAHM)

SN	Region	Province	Agriculture labour (Afs/day)	Pair of oxen hiring (Afs/day)	Water pump charge (Afs/hour)	Tractor hiring charge (Afs/hour)	Diesel (Afs/Litre)	Liquid Gas (Afs/kg)	Kerosene (Afs/litre)	Petrol (Afs/litre)
1	North	Faryab	350	500	150	800	40	45	33	36
2	North	Juzjan	200	600	200	700	35	60		36
3	North	Sar-i-Pul	280	700		800	39	55		38
4	North	Balkh	200	750	270	700	30	50		33
5	North	Samangan	180	500		600	36	55		37
6	North-East	Bughlan	200	600	300	600	34	60		35
7	North-East	Kunduz	230	350		800	38	55		37
8	North-East	Takhar	200	600		800	40	60		38
9	North-East	Badakhshan	250	900			40	60		40
10	West	Heart	200	1,000	150		37	40		35
11	West	Farah	200		160	800	30	50		35
12	West	Badghis	500	300		800	36	45		40
13	West-Central	Ghor	250			1,000	45	60		45
14	West-Central	Bamyan	250	1,000		700	38	60		38
15	Central	Kabul	200	650	130	400	35	44	50	34
16	Central	Parwan	200	600	200	700	40	55		42
17	Central	Panjsheer	250	600		1000	37	55	37	40
18	Central	Kapisa	200	600	280	600	39	55	50	42
19	Central	Logar	250	1,300		500	38	50		38
20	Central	Wardak	250	500	150	500	36	50		37
21	South	Paktya	200		260	470	41	51		39
22	South	Paktika	200		130	300	52	42	42	42
23	South	Khost	200		280	490	40	51		39
24	South	Ghazni	250	600	250	400	36	45		40
25	East	Nangarhar	190	750	100	400	35	57		36
26	East	Laghman	150	250	150	412	39	47		36
27	East	Kunarha	150			350	43	54		40
28	East	Nooristan	250	400			51	55		50
29	South-West	Kandahar	200			450	35	45		40
30	South-West	Helmand	200		180	900	40	45		45
31	South-West	Zabul	200		380	420	40	45		42
32	South-West	Nimroz	250			550	46	55		50
33	South-West	Uruzgan	300			600	42	56		50
34	South-West	Daikunde	200	1200	500	1,000	48	70		65

وزارت زراعت، مالداري و مواد غذائي

قيمت هاي محصولات زراعتي در مارکيت هاي ولايات

Annex V: Retail market prices of selected agricultural commodities

به افغانی فی کيلو گرام (Kg/Afg)

هفته سوم ماه عقرب سال 1388

(Nov 07 - 13 Nov 2009)

شماره	منطقه Region	ولایات Province	گندم محلی (LocalW)	آرد وارداتی (ImpWF)	گوشت گاو (Beef)	گوشت گوساله (Veal)	گوشت گوسفند (Mutton)
1	شمال North	فاریاب Faryab	17	20.5	170	190	220
2	شمال North	جوزجان Juzjan	14	21	180	200	220
3	شمال North	سرپل Sar-i-pul	13	20	150	170	190
4	شمال North	بلخ Balkh	15.5	18.5	170	180	210
5	شمال North	سمنگان Samangan	13	20	170	180	200
6	شمال شرق North East	بغلان Bughlan	16	22	180	200	200
7	شمال شرق North East	کندز Kunduz	13	20.5	150	200	200
8	شمال شرق North East	تخار Takhar	16	22	140	160	200
9	شمال شرق North East	بدخشان Badakhshan	15	22	140	160	180
10	غرب West	هرات Heart	12	20	160	220	260
11	غرب West	فراه Farah	14	22	160	160	200
12	غرب West	بادغیس Badghis	17	24	160	180	210
13	غرب مرکزی West central	غور Ghor	18	22	150	160	180
14	غرب مرکزی West central	بامیان Bamyān	16	21	150	150	170
15	مرکزی Central	کابل Kabul	16.5	19.5	130	160	200
16	مرکزی Central	پروان Parwan	17	21	150	170	200
17	مرکزی Central	پنجشیر Panjsher	18	23.25	150	170	200
18	مرکزی Central	کاپیسا Kapisa	15	21	150	160	200
19	مرکزی Central	لوگر Logar	16	21.5	130	170	200
20	مرکزی Central	وردک Wordak	17	23	150	160	200
21	جنوب South	پکتیا Paktiya	16	19	130		180
22	جنوب South	پکتیکا Paktika	18	20	130	150	200
23	جنوب South	خوست Khost	18	23	130		166
24	جنوب South	غزنی Ghani	19	22	140	180	200
25	شرق East	ننگرهار Nangarhar	15	20.5	130	141	205
26	شرق East	لغمان Laghman	17	20	136	153	177
27	شرق East	کنرہا Kunarha	16.5	21.5	130	136	148
28	شرق East	نورستان Nooristan	25	35	160	170	180
29	جنوب غرب South west	کندهار Kandahar	17	24	175	188	230
30	جنوب غرب South west	هلمند Helmand	15	21	150	170	200
31	جنوب غرب South west	زابل Zabul	16	21	130		200
32	جنوب غرب South west	نیمروز Nimroz	13.5	20	150	170	200
33	جنوب غرب South west	ارزگان Uruzgan	17	20	170	170	200
34	جنوب غرب South west	دایکندی Daikundy	22	28	160	160	200

Annex VI: Agricultural commodity Prices in border towns

Year: 2009

Month: October

Sn	Commodity	Unit	(Herat) Islam Qala Price (Afs)	(Herat) Torghondi Price (Afs)	(Kunduz) Shir Khan Price (Afs)	(Balkh) Hairatan Price (Afs)	(Kandahar) Spin Boldak Price (Afs)	(Nimroz) Zaranj Price (Afs)	(Jalalabad) Torkham Price (Afs)
1	Imported wheat	Kg				13	14		
2	Local wheat	Kg	12	11.5	13	15	15	15	
3	Imported flour	Kg	21	20	21	19	20	22	21
4	Local Flour	Kg	13	12.5	15.7	20			
5	Local Rice	Kg	50	50	31.5	45			28
6	Imported Rice	Kg	55	60	55	50	42	45	60
7	Beef	Kg	150	160	150	170	132	140	130
8	Chicken	Kg	95	100	110	140	90	100	120
9	Mutton	Kg	200	220	190	220	200	210	210
10	Buffalo meat	Kg							120
11	DAP	Kg		32	31	56	27	28	
12	Imported urea	Kg	16	17	15	17	13	14	
13	Other Fertilizers	Kg	20		17	17			
14	Vegetable oil	Liter	60	60	57	53	44	45	60
15	Potato	Kg	15	15	14	14	8	15	13
16	Onion	Kg	10	10	10	12	6	10	12
17	Grape	Kg	35	40	50	40	21	26	30
18	Pomegranate	Kg	40	45	50	30			
19	Apricot	Kg							
20	Apple	Kg	40	45	35	50	30		27
21	Chickpea	Kg	45	50	60	45	51	55	43
22	Sesame	Kg			41	70	36		
23	Mung bean	Kg	27	30	15	30	33	38	27
24	Liquid Gas	Kg	42	35	60	45	35	30	58
25	Kerosene	Liter	37	35			38	37	36
26	Diesel	Liter	37	37	39	37	37	38	34.5
27	Petrol	Liter	40	37	38	35	38	38	35
28	Imported Saffron	Kg	157,500	158,000					
29	Local Saffron	Kg							
30	LPG								

Annex VII: Weekly retail market prices of fruits and vegetables in Kabul, Kunduz, Herat, Kandahar and Jalalabad in October/November 2009
(Afs/Kg.)

Fruits/ Vegetables	Kabul					Kunduz					Herat					Kandahar					Jalalabad									
	Oct WK1	Oct WK2	Oct WK3	Oct WK4	Oct Mean	Nov WK1	Oct WK1	Oct WK2	Oct WK3	Oct WK4	Oct Mean	Nov WK1	Oct WK1	Oct WK2	Oct WK3	Oct WK4	Oct Mean	Nov WK1	Sep WK1	Sep WK2	Sep WK3	Sep WK4	Sep Mean	Nov WK1	Oct WK1	Oct WK2	Oct WK3	Oct WK4	Oct Mean	Nov WK1
Apple	23	22	21	20	22	20	30	35	35	40	35	35	40	45	40	50	44	35	25	13	12	12	16	12	21	27	28	24	25	22
Apricot	50				50																				41	40	40	39	40	38
Pear	58	59	58	57	58	56	40	50	55	50	49	40	80	70	65	75	73	57												
Peach	35	40			38														34											
Plum	24	30	35		30																									
Cherry																														
Sweet Cherry																														
Pomegranate	33	30	30	28.5	30	25	50	40	40	40	43	40	40	40	35		38	41	12	11	11	18	13	11	19	18	19	17	18	20
Mango	65	70	75		70																			51	50					
Fig	80	83	86	90	85	92							70	75			73													
Banana	40	41	40	39	40	38	40	30	35	30	34	25	55	52	50	90	62	45	33	24	25	24	27	25	30	29	29	30	30	30
Citrus							80	90	100	85	89	80				45	45								55	50	45	40	48	50
Grape	19	20	19	18	19	17	50	50	45	45	48	40	40	36	40		39	50	15	23	27	27	23	28	17	18	25	27	22	28
Water Melon	14	14	12	11	13	13	6	6	6	6	6	7	9	8	10		9	12	13	12	10	13	12	14	10	11	9	10	10	11
Melon	14	18	13	14	15	16	7	7	8	7	7	8	10	13	15		13	18	19	25			22	10	12	12	14	12	14	
Potato	12.5	13	13	12.5	13	13	14	14	14	14	14	14	15	17	15	10	14	16	11	10	11	11	11	11	13	12	12	12	12	12
Tomato	12	13	15	18	15	17	18	20	30	35	26	25	15	15	20	38	22	27	21	19	14	18	18	14	9	8	17	17	13	14
Eggplant	13	14	14	14	14	16	10	12	15	17	14	20	10	15	10	25	15	20	17	18	18	20	18	18	7	7	7	7	7	10
Okra	21	24	28	30	26	33	25	25	45	45	35	45	25	35	40		33	18	26	18	35	24	34		18	27	29	25	25	27
Onion	12.5	13	12	11	12	10	10	10	9	9	10	9	10	10	40	35	24	11	10	9	10	8	9	9	9	9	8	9	9	8
Cauliflower	24	20	18	17	20	15	20	20	24	20	21	20	25	25	20		23	32	20	21	24	25	23	23	18	15	15	13	15	12
Cucumber	30	35	16	37	30	40							25	25	35	32	29	42	29	29	27	32	29	32	15			15	59	
Pepper	19	20	19	20	20	21	30	35	40	45	38	40	40	45	60	100	61	100	42	45	45	45	44	56	27	25	26	26	26	25
Squash	16	17	16	17	17	18	10	8	10	10	10	15	20	20	15	25	20	19	10	13	18	12	13	9	7	7	7	7	7	7
Leek	18	18	17	18	18	19	13	9	10	11	11	12	15	20	20	20	19	28	13	15	15	16	15	15	9	8	10	8	9	8
Spinach	19	20	16	17	18	16	12	12	10	14	12	12	8	10	10	10	10	11	31	30	22	28	28	22	9	8	9	7	8	6
Coriander	17.5	18	17	18	18	17	20	20	22	20	21	20						25	30	31	28	32	30	28	12	15	15	14	14	15
Carrot	18.5	17	16	15	17	13	40	29	20	10	25	8						9												24
Cabbage	21	20	18	20	20	21	30	30	30	30	30	40						17												20
Turnip	12	19	10	10	13	9	9	10	8	8	9	7						10					9	9	7	7	8	7	7	7
Garlic	29	32	34	35	33	38	57	70	70	75	68	75						75	83	70	72	70	74	69	68	65	65	63	65	80

Annex VIII: Weekly market price of agricultural commodities/services

Location (Province)	Commodity/Services	Aug 09				Sep 09				Oct 09				Nov 09
		Week 1	Week 2	Week 3	Week 4	Week 1	Week 2	Week 3	Week 4	Week 1	Week 2	Week 3	Week 4	Week1
Kabul (Kabul)	Wheat (kg)	20.5	22.0	21.0	21.0	21.0	18.0	18.0	19.0	19.0	19.5	19.5	18.5	18.0
Kandahar (Kandahar)	Wheat (kg)	18.3	18.3	18.3	19.0	19.0	19.0	19.0	19.0	19.0	19.0	19.0	19.0	19.0
Jalalabad (Nagarhar)	Wheat (kg)	18.0	15.8	16.0	18.0	18.0	18.7	18.7	18.7	16.0	16.3	17.0	17.0	17.7
Herat (Herat)	Wheat (kg)	13.0	12.5	12.1	12.8	11.7	12.5	12.5	12.5	12.3	12.3	12.3	12.1	12.3
Mazar (Balkh)	Wheat (kg)	14.0	14.0	13.0	13.0	14.0	14.0	14.0	14.0	13.0	14.0	14.0	14.0	13.5
Faizabad (Badakhshan)	Wheat (kg)	17.1	17.1	17.1	17.1	17.4	17.1	17.1	17.1	17.1	17.1	17.1	17.1	17.1
Maimana (Faryab)	Wheat (kg)	15.7	17.5	17.0	16.5	15.5	17.0	17.0	16.5	16.5	16.5	17.3	16.0	17.1
Nili (Daikundy)	Wheat (kg)	22.0	21.0	21.0	22.0	22.0	22.0	22.0	22.0	22.0	22.0	22.0	22.0	22.0
Ghor (Ghor)	Wheat (kg)	14.0	12.0	12.0	12.0	10.0	10.0	10.0	10.0	12.0	10.0	10.0	10.0	10.0
Kabul (Kabul)	Wheat flour (kg)	22.5	23.0	22.0	22.0	22.0	21.0	21.0	21.0	21.0	21.5	21.5	20.5	21.6
Kandahar (Kandahar)	Wheat flour (kg)	21.0	21.0	21.0	22.0	22.0	22.0	22.0	22.0	22.0	22.0	22.0	23.0	23.0
Jalalabad (Nagarhar)	Wheat flour (kg)	22.0	21.3	22.0	22.0	22.0	22.3	22.3	22.3	22.2	22.0	22.3	22.8	23.5
Herat (Herat)	Wheat flour (kg)	20.0	20.8	20.5	20.6	20.2	20.4	20.3	20.5	21.9	21.3	21.3	19.4	22.5
Mazar (Balkh)	Wheat flour (kg)	17.0	17.0	17.0	16.0	18.0	17.0	17.0	17.0	17.0	17.0	17.0	17.0	18.0
Faizabad (Badakhshan)	Wheat flour (kg)	22.8	22.8	22.8	22.8	22.8	22.8	22.8	22.8	22.8	22.8	21.4	21.4	21.4
Maimana (Faryab)	Wheat flour (kg)	20.0	20.0	21.0	20.5	20.0	20.0	20.0	19.0	18.0	18.0	20.0	19.5	19.7
Nili (Daikundy)	Wheat flour (kg)	27.0	27.0	27.0	26.0	27.0	27.0	27.0	28.0	27.0	28.0	28.0	28.0	27.0
Ghor (Ghor)	Wheat flour (kg)	25.0	24.0	24.0	24.0	24.0	24.0	24.5	25.0	25.0	25.0	24.0	24.0	24.0
Kabul (Kabul)	Bread (kg)	32.5	32.5	32.5	32.5	32.5	32.5	32.5	32.5	32.5	32.5	32.5	32.5	32.5
Kandahar (Kandahar)	Bread (kg)	40.0	40.0	40.0	40.0	40.0	40.0	40.0	40.0	40.0	40.0	40.0	40.0	40.0
Jalalabad (Nagarhar)	Bread (kg)	53.3	66.7	66.7	66.7	66.7	66.7	66.7	66.7	53.3	53.3	53.3	53.3	53.3
Herat (Herat)	Bread (kg)	29.4	29.4	29.4	29.4	29.4	29.4	29.4	29.4	29.4	29.4	30.0	29.4	30.0
Mazar (Balkh)	Bread (kg)	25.0	25.0	25.0	25.0	25.0	25.0	25.0	25.0	25.0	25.0	25.0	25.0	25.0
Faizabad (Badakhshan)	Bread (kg)	55.6	55.6	55.6	55.6	55.6	55.6	55.6	55.6	55.6	55.6	55.6	55.6	55.6
Maimana (Faryab)	Bread (kg)	33.5	36.0	34.0	33.0	33.0	34.0	34.0	33.0	33.0	33.0	33.0	32.0	33.0
Nili (Daikundy)	Bread (kg)	45.0	45.0	45.0	45.0	45.0	45.0	45.0	45.0	45.0	45.0	45.0	45.0	45.0
Ghor (Ghor)	Bread (kg)	35.0	35.0	35.0	35.0	35.0	35.0	35.0	35.0	35.0	35.0	35.0	35.0	35.0

Annex VIII: Weekly market price of agricultural commodities/services

Location (Province)	Commodity/Services	Aug 09				Sep 09				Oct 09				Nov 09
		Week 1	Week 2	Week 3	Week 4	Week 1	Week 2	Week 3	Week 4	Week 1	Week 2	Week 3	Week 4	Week 1
Kabul (Kabul)	Diesel/litre	32.0	35.0	36.0	37.0	36.0	35.0	36.0	36.0	38.0	40.0	39.0	36.0	36.0
Kandahar (Kandahar)	Diesel/litre	36.0	34.0	34.0	34.0	35.0	36.0	36.0	35.0	35.0	37.0	41.0	47.0	44.0
Jalalabad (Nagarhar)	Diesel/litre	36.0	37.0	37.0	37.0	37.0	37.0	37.0	37.0	36.8	36.8	37.0	38.0	38.0
Herat (Herat)	Diesel/litre	34.0	32.0	33.0	33.0	33.0	33.0	33.0	33.0	33.0	32.0	42.0	44.0	42.0
Mazar (Balkh)	Diesel/litre	33.0	34.0	34.0	33.0	35.0	35.0	35.0	34.0	34.0	34.0	37.0	36.0	42.0
Faizabad (Badakhshan)	Diesel/litre	38.0	38.0	38.0	38.0	40.0	40.0	40.0	40.0	40.0	40.0	43.0	45.0	45.0
Maimana (Faryab)	Diesel/litre	35.0	35.0	35.0	36.0	36.0	36.0	37.0	37.0	39.0	39.0	40.0	43.0	42.0
Nili (Daikundy)	Diesel/litre	42.0	42.0	42.0	42.0	42.0	42.0	42.0	42.0	42.0	42.0	42.0	42.0	50.0
Ghor (Ghor)	Diesel/litre	40.0	40.0	38.0	38.0	38.0	38.0	38.0	37.0	37.0	38.0	45.0	45.0	50.0
Kabul (Kabul)	One-year female sheep, live	5,250	5,250	5,250	5,250	5,250	5,250	5,250	5,250	5,300	5,350	5,350	5,350	5,350
Kandahar (Kandahar)	One-year female sheep, live	5,000	5,000	5,000	5,000	5,000	5,000	5,000	5,000	5,000	5,000	5,000	5,000	5,000
Jalalabad (Nagarhar)	One-year female sheep, live	5,000	5,066	5,400	5,400	5,400	5,067	5,067	5,067	4,000	4,000	4,000	4,000	4,000
Herat (Herat)	One-year female sheep, live	3,400	3,400	3,400	3,400	3,400	3,500	3,550	3,550	3,550	3,550	3,550	3,580	3,600
Mazar (Balkh)	One-year female sheep, live	4,300	4,250	4,250	4,250	4,300	4,400	4,350	4,200	4,200	4,300	4,200	4,300	4,300
Faizabad (Badakhshan)	One-year female sheep, live	2,800	2,800	2,800	2,800	2,800	2,800	2,800	2,800	2,800	2,800	2,800	2,800	2,800
Maimana (Faryab)	One-year female sheep, live	3,500	5,200	3,500	3,600	3,700	3,800	4,500	5,000	5,000	5,000	5,100	5,200	5,200
Nili (Daikundy)	One-year female sheep, live	4,200	4,200	4,000	4,000	4,100	4,100	3,800	3,800	3,800	3,800	3,800	3,800	3,800
Ghor (Ghor)	One-year female sheep, live	4,000	4,000	4,000	4,000	4,000	4,000	4,000	4,000	5,000	5,200	5,000	5,000	5,000
Kabul (Kabul)	Casual labour/day (unskilled)	250	250	240	240	240	240	240	240	250	250	250	250	250
Kandahar (Kandahar)	Casual labour/day (unskilled)	250	250	250	250	250	250	250	250	250	250	250	250	250
Jalalabad (Nagarhar)	Casual labour/day (unskilled)	150	160	170	170	170	160	160	160	230	230	230	230	230
Herat (Herat)	Casual labour/day (unskilled)	200	200	250	250	250	250	250	250	250	250	250	250	250
Mazar (Balkh)	Casual labour/day (unskilled)	180	170	170	170	160	160	170	160	160	160	150	150	150
Faizabad (Badakhshan)	Casual labour/day (unskilled)	250	250	250	250	250	250	250	250	250	250	250	250	300
Maimana (Faryab)	Casual labour/day (unskilled)	320	350	340	330	320	340	320	300	350	350	290	300	320
Nili (Daikundy)	Casual labour/day (unskilled)	200	200	200	200	200	200	200	200	200	200	200	200	200
Ghor (Ghor)	Casual labour/day (unskilled)	250	250	250	250	250	250	250	250	250	300	250	250	250

**Annex IX: Monthly average price of wheat in international market
(US\$/tonne)**

Wheat type	Year	Jan	Feb	Mar	Apr	May	Jun	Jul	Aug	Sep	Oct	Nov	Dec
Argentina, Up River, fob (1)	2004	161	151	151	160	157	145	139	126	126	121	116	111
	2005	107	113	127	129	133	133	143	142	137	132	135	130
	2006	132	137	136	136	144	156	158	160	166	192	187	184
	2007	185	174	185	209	218	235	254	268	325	322	295	310
	2008	325	361	395								189	174
	2009	208	219	216	212	208	226	234	229	207	213	211	
US No. 2 Hard Red Winter ord., US fob Gulf (1)	2004	170	165	168	173	167	160	154	146	154	155	163	160
	2005	157	154	158	149	151	148	148	155	166	175	167	167
	2006	170	181	181	187	199	204	213	199	207	218	218	218
	2007	209	207	209	206	203	225	246	273	342	354	335	381
	2008	377	439	482	389	350	358	343	341	312	260	247	235
	2009	256	241	246	242	261	270	233	218	201	209	221	
US No. 2 Soft Red Winter, fob US Gulf (2)	2004	155	157	156	160	150	140	135	130	137	140	141	138
	2005	142	143	155	134	134	133	131	129	128	135	133	137
	2006	143	148	144	141	148	142	146	143	162	197	192	190
	2007	176	174	170	171	180	200	217	250	323	327	308	345
	2008	340	394	397	309	260	249	247	250	225	188	182	177
	2009	195	183	185	183	196	206	177	161	160	171	195	

Sources:

(1) International Grain Council

(2) USDA

