



دکرهڼی ، اوبولنگولو او مالدارۍ وزارت  
وزارت زراعت ، آبیاری و مالدارۍ

دافغانستان اسلامي جمهوریت  
جمهوری اسلامی افغانستان

**Islamic Republic of Afghanistan**  
**Ministry of Agriculture, Irrigation and Livestock**



## **AGRICULTURE PROSPECTS REPORT**



**Ministry of Agriculture, Irrigation and Livestock**  
**General Department of Policy and Planning**  
**Statistics and Marketing Information Office**

**Kabul, 26 December 2010**

## **Abbreviations**

APR	Agriculture Prospects Report
DAP	Diammonium Phosphate
EU	European Union
FAO	Food and Agriculture Organization of the United Nations
MAIL	Ministry of Agriculture, Irrigation and Livestock
USDA	United States Department of Agriculture
USGS	United States Geological Survey
WFP	World Food Program

## **Acknowledgement**

Main sources of updated data in this report are farmers and provincial agricultural offices of 34 provinces, and the technical departments of MAIL. Many thanks are due to farmers, projects, offices, agencies and individuals for their help. MAIL appreciates contributions made by them in providing real time information and data. Thanks are also due to many others who contributed towards field work and/or helped with the writing of this report.

***Cover Photo: Paddy at the harvesting stage in one field in Behsud Khas village of Behsud district in Nangarhar province***

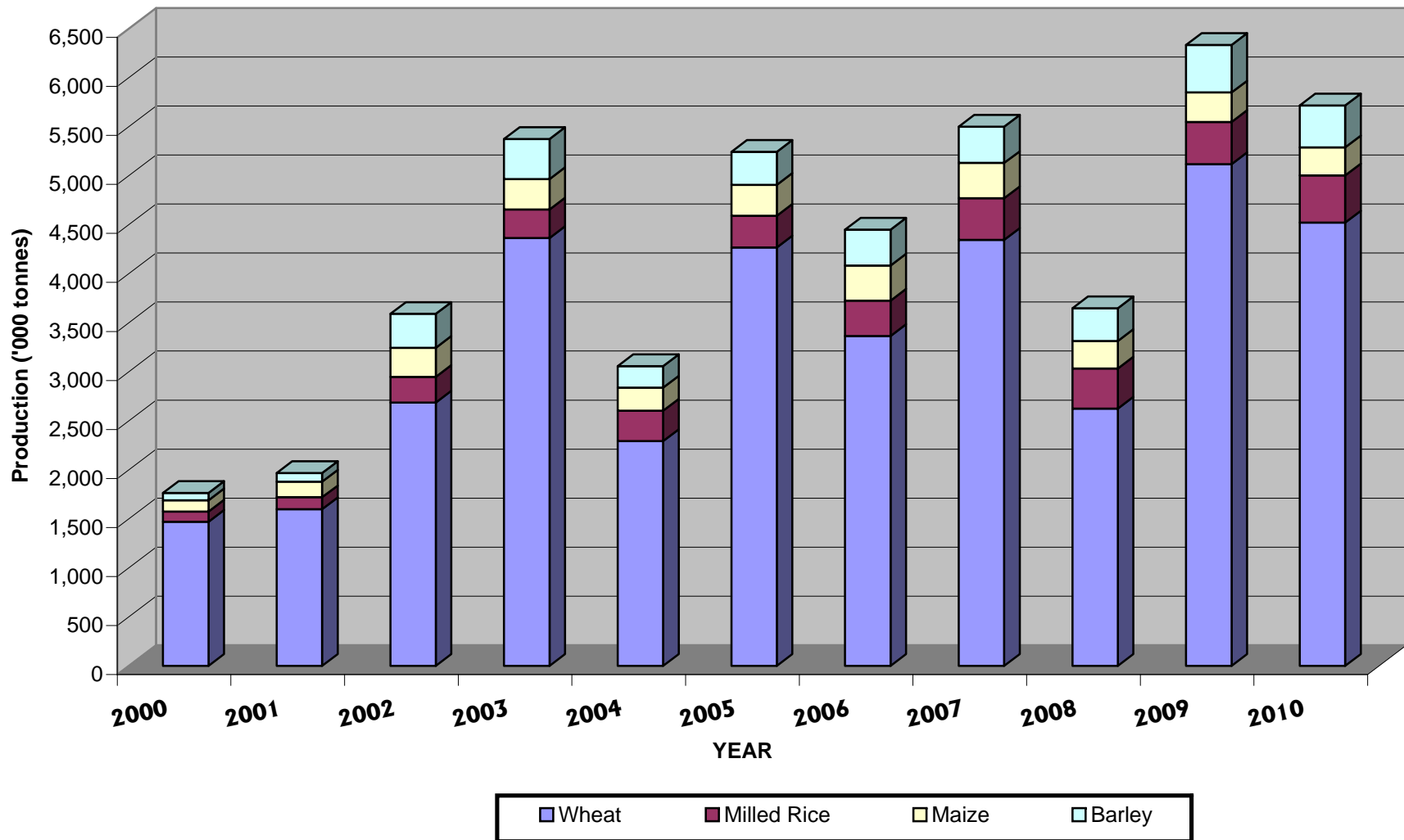


**"Strengthening Agricultural Economics, Market Information and Statistics Services" (GCP/AFG/063/EC)**

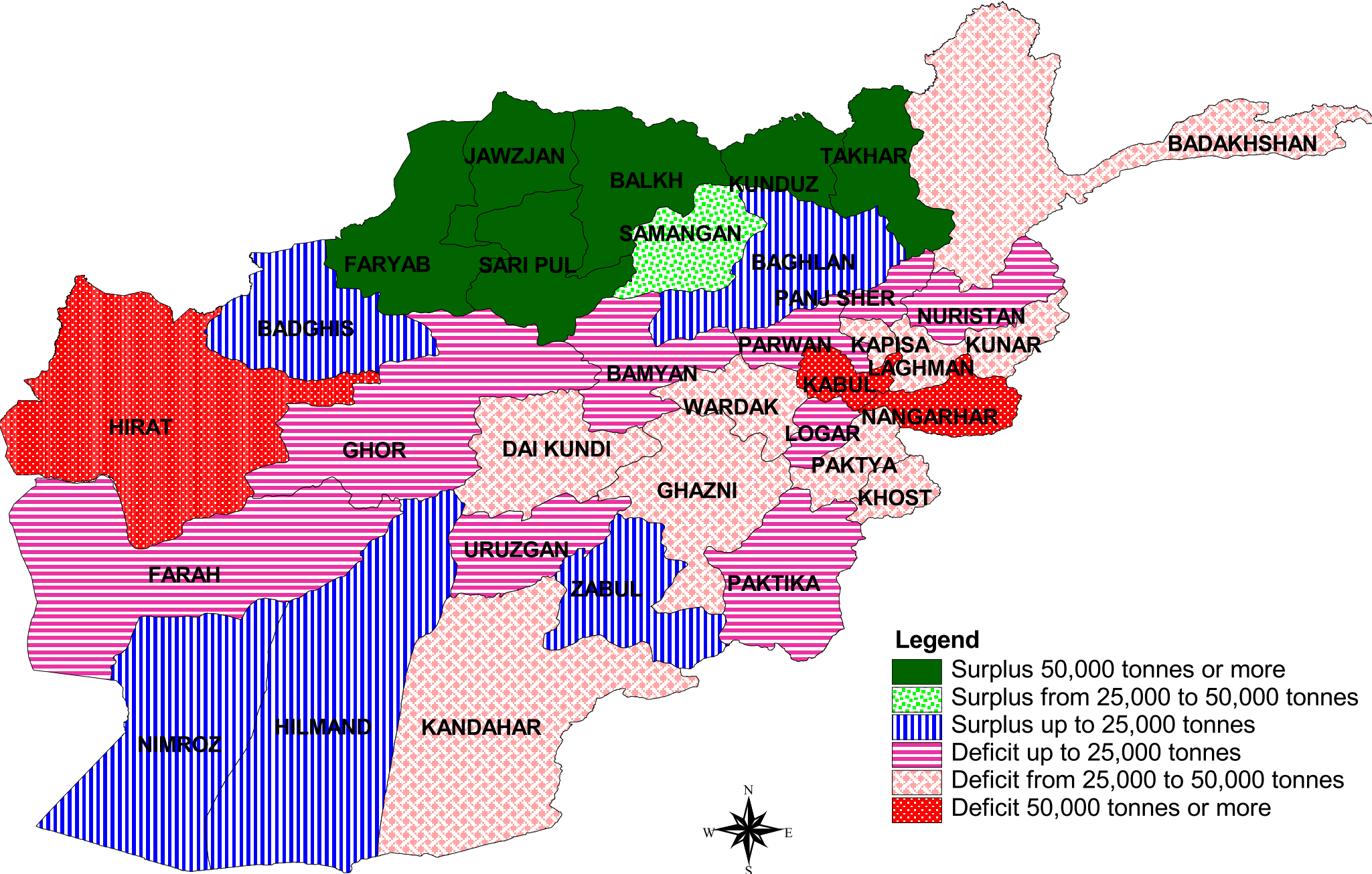
***The EU-funded project mentioned above provided technical guidance and financial support for the production of this report.***

***Price bulletins and other reports produced by the project are available at:***  
***<http://www.mail.gov.af/m/english/English.htm>***  
***[http://www.fao.org/world/afghanistan/aqteo\\_en.htm](http://www.fao.org/world/afghanistan/aqteo_en.htm)***

# Afghanistan Cereal Production (2000-2010)



# Wheat Balance in 2010



# ***CONTENT***

## ***Afghanistan Cereal Production (2000-2010)***

### ***Wheat Balance in Marketing Year 2010 (July 2010 to June 2011) by province (for settled population only)***

<b>1. SUMMARY .....</b>	<b>1</b>
<b>2. CEREAL AREA, PRODUCTION, REQUIREMENT AND DEFICIT IN 2010.....</b>	<b>2</b>
<b>3. PROSPECTS OF THE 2011 CEREAL PRODUCTION.....</b>	<b>3</b>
<b>4. PRICE OF AGRICULTURAL COMMODITIES .....</b>	<b>4</b>
<b>4.1. CONSUMER PRICE INDEX.....</b>	<b>4</b>
<b>4.2. DOMESTIC AND INTERNATIONAL PRICE OF WHEAT.....</b>	<b>4</b>
<b>4.3. PRICES OF OTHER AGRICULTURAL COMMODITIES.....</b>	<b>4</b>

### **Tables**

- 1: Area and Production of different Cereals, 2010
- 2: Changes in wheat area, yield and production in 2010 compared to 2009
- 3: Cereal production in Afghanistan (2002-2010)
- 4: Cereal Balance Sheet, 2010
- 5: May and August 2010 Production Forecasts, and the Final Estimates

### **Annexes**

- Annex 1: Rainfall amount in November 2009 to November 2010 at various locations in Afghanistan
- Annex 2: Wheat seed produced by the FAO seed project (2003-2009)
- Annex 3: Area and production of wheat in 2010 by province (Final Estimates)
- Annex 4: Wheat Balance in 2010 by province (Final estimates)
- Annex 5: Production and requirements of cereals in 2010 (Final estimates)
- Annex 6: Normalized Difference Vegetation Index (NDVI) in 21-30 September
- Annex 7: Normalized Difference Vegetation Index (NDVI) in 11-20 December
- Annex 8: Domestic and International Prices of Agricultural Commodities

**Ministry of Agriculture, Irrigation and Livestock**  
**General Department of Policy and Planning**  
**Statistics and Marketing Information Office**

**Agriculture Prospects Report (APR)**

**1. Summary**

Agriculture Prospects Report (APR) issued by the Ministry of Agriculture, Irrigation and Livestock (MAIL) on the 26<sup>th</sup> May 2010 provided preliminary estimates of the 2010/11 marketing year's cereal crop outputs and deficit. The data presented in that APR was updated on August 19<sup>th</sup>. This report provides the final estimates of cereal production in Afghanistan in 2010 on the basis of the following:

- Updated data on crop area and yield from provinces
- Results of the farmers' interviews in provinces
- Results of the wheat crop cuts surveys conducted in May-August in 7 provinces<sup>1</sup>
- Results of the paddy crop cuts surveys conducted in October/November in 8 provinces<sup>2</sup>

The APR is mainly produced for the use of MAIL. For updating APRs, two staff from MAIL (25 provinces) or DAIL (9 provinces) undertook provincial crop assessments. The assessment missions held discussions with the respective provincial and district staff. They collected provincial level information and data on crop area/production, livestock condition and adverse factors (e.g. floods, rust, avalanche, frost, pests, diseases, poor quality of seed, etc.). They also interviewed farmers for the purposes of validating data provided by DAILs. Collected information and data were swiftly processed at MAIL for analysis, interpretation and report writing.

APRs are primarily based upon: (i) the provincial crop assessment reports, (ii) results of the farmers' survey and (iii) results of the crop cuts survey. However, secondary sources of data are also used. For example, for validation and consistency checks, crop data provided by DAIL are compared with the historical data sets, as well as with the rainfall amount/distribution and the vegetation profile in the crop season.

In each DAIL, 3 staff members collect, maintain and provide information on cereal and livestock production prospects and adverse conditions on a regular basis. Technical departments of MAIL provide wealth of information on current crop and livestock situation. Information and data provided by FAO projects, FAO area offices and units, USGS Agro-met project, FEWS NET, WFP, and FAO missions are also very important sources of information for APR.

---

<sup>1</sup> Badghis, Balkh, Herat, Kunar, Kunduz, Laghman and Nangarhar

<sup>2</sup> Badghis, Baghlan, Herat, Kunar, Kunduz, Laghman, Nangarhar and Takhar

## 2. Cereal Area, Production, Requirement and Deficit in 2010

Total area under cereal cultivation in 2010 is estimated at 3.0 million hectares, of which over 80% was shown with wheat. The forecast for cereal production in 2010 is 5.72 million MT, which includes wheat 4.52 million MT (79%), rice 481,000 MT (8%), maize 285,000 MT (5%) and barley 428,000 MT (8%).

**Table 1: Area and Production of different Cereals in 2010 (Final estimates)**

Crop	Area (‘000 ha)	Yield (MT/ha)	Production (‘000 MT)
Irrigated wheat (Winter & Spring)	1,303	2.60	3,394
Rainfed wheat (Winter & Spring)	1,051	1.07	1,127
<b>All wheat</b>	<b>2,354</b>	<b>1.92</b>	<b>4,521</b>
Milled rice (paddy yield)	208	3.45	481
Maize	183	1.56	285
Barley	212	2.02	428
<b>Overall</b>	<b>2,957</b>		<b>5,715</b>

Wheat production in 2010 is 11% lower than in 2009, with reduction in area by 8.6% and yield by 2.5%.

**Table 2: Changes in the 2010 wheat area, yield and production compared to 2009**

Crop	2009			2010			% change in		
	Area	Yield	Prod	Area	Yield	Prod	Area	Yield	Prod
All wheat	2,575	1.97	5,064	2,354	1.92	4,521	-8.6	-2.5	-10.7

Production of cereals in 2010 (5.72 million MT) is below 10% compared to 2009 (6.33 million MT), but still 11% above the average level (5.15 million MT).

**Table 3: Cereal production<sup>3</sup> in Afghanistan (2002-2010) (‘000 MT)**

Crop	2002	2003	2004	2005	2006	2007	2008	2009	2010
Irrigated wheat	2,110	3,017	1,867	2,728	2,604	2,878	2,406	3,433	3,394
Rainfed wheat	576	1,345	426	1,538	759	1,465	217	1,682	1,127
<b>All wheat</b>	<b>2,686</b>	<b>4,362</b>	<b>2,293</b>	<b>4,266</b>	<b>3,363</b>	<b>4,343</b>	<b>2,623</b>	<b>5,115</b>	<b>4,521</b>
Milled rice	260	291	310	325	361	425	410	432	481
Maize	298	310	234	315	359	360	280	300	285
Barley	345	410	220	337	364	370	333	486	428
<b>Total cereals</b>	<b>3,589</b>	<b>5,373</b>	<b>3,057</b>	<b>5,243</b>	<b>4,447</b>	<b>5,498</b>	<b>3,646</b>	<b>6,333</b>	<b>5,715</b>

Total cereal requirement in MY 2010 is estimated at 6.45 million MT, out of which 5.23 million MT (80%) is wheat. Assuming no difference between “year-end-stocks” in MY 2010 and MY 2011, net import-requirement of cereals in MY 2010 is estimated at 735,000 MT. This deficit consists of 710,000 MT of wheat and 25,000 MT of milled rice. (Table 4; next page)

<sup>3</sup> Sources: FAO/WFP Food and Crop Assessment Mission for 2002-2004; MAIL 2005-2010

**Table 4: The 2010 Cereal Balance Sheet ('000 MT)**

Crop	Requirements					Domestic production	Surplus/ Deficit
	Food	Seed	Feed	Loss	Total		
Irrigated wheat		228		509		3,394	
Rainfed wheat		85		169		1,127	
<b>All wheat</b>	<b>4,240</b>	<b>313</b>		<b>678</b>	<b>5,231</b>	<b>4,521</b>	<b>-710</b>
Milled rice	450	22		34	506	481	-25
Maize	53	11	178	43	285	285	
Barley	26	23	315	64	428	428	
<b>Total</b>	<b>4,769</b>	<b>369</b>	<b>493</b>	<b>819</b>	<b>6,450</b>	<b>5,715</b>	<b>-735</b>

Final estimates of cereals and wheat production at the national level are virtually equal to the preliminary estimates of May, although slight differences were noticed in the case of some provinces. Compared with the preliminary estimates of May, overall production of maize and barley is estimated at 5% and 2% lower.

Compared with the forecast made in May, production of paddy is estimated at 7% higher. The amount and distribution of rainfall in February to July indicate that the period was highly favorable for growth and development of paddy. Field reports and crop cuts results also consistently indicated favorable conditions for paddy. Vegetation was above normal in the critical growing period of paddy. (Annex 6)

**Table 5: May and August 2010 Production Forecasts, and the Final Estimates**

Crop	Estimated Domestic Production ('000 MT)			Change in December estimate on May estimate
	May (First forecast)	August (Second)	December (Final)	
All wheat	4,532	4,532	4,521	-0.2 %
Milled rice	450	440	481	6.9 %
Maize	301	281	285	-5.3 %
Barley	437	437	428	-2.1 %
<b>Total</b>	<b>5,720</b>	<b>5,690</b>	<b>5,715</b>	<b>-0.1 %</b>

### 3. Prospects of the 2011 Cereal Production

Although it is fairly early to predict cereal production level in 2011 quantitatively, the production prospects are bleak with certainty. Matters of concern are:

- Unfavorable rainfall conditions for normal farming operations in November (Annex 1 and field reports) and December (field reports)
- Delay in planting of rainfed wheat and barley, in particular (field reports)
- A lack of adequate water supply in irrigated fields (field reports)
- Well below normal vegetation, especially in areas where rainfed wheat areas are predominant (Annex 7)
- No indications of any improvement in the weather conditions (field reports)
- Cereal deficit in 2011 is likely to be higher than 1.2 million MT. (given the historical data sets)

Cereal production in 2009 was at 35-years' record level. Latest odd years (2009, 2007, 2005 and 2003) were years with good cereal harvest mainly due to favorable weather conditions, whilst production in even years (2008, 2006, 2004 and 2002) dipped down considerably due to drought. The production in 2010 followed odd year pattern, which was abnormal but desirable. Year 2011 is not going to follow normal and highly desirable odd year pattern. That is bad news.

#### **4. Price of Agricultural Commodities<sup>4</sup>**

##### **4.1. Consumer Price Index**

National Consumer Price Index (CPI)<sup>5</sup> in November 2010 was 12 percent points higher than in November 2009. This is a reasonable increase. Annual increase in the national food index was 12.3 percent points. The "Non-Food Index" increased by 11.8 percent points, whilst the Exchange-rate Index decreased by 7.6 percent points in the said period. The changes in the case of food indexes were substantially higher in the case of "Sugar and sweets", "Vegetables", "Oils and fats" and "Meat".

##### **4.2. Domestic and International Price of wheat<sup>6</sup>**

There was an upward movement in the price of local wheat in October, November and December. The price developments in October/November/December 2010 compares very well with its price in 2009. The price in December 2010 is 2% higher than December 2009 price. In mid-September the price of imported wheat flour was Afs 23.4/kg. Its price was 23.6 Afs/Kg in the first week of October. There was no increase in the price of imported wheat flour in November/December. The price is 23.64 Afs/kg in December.

In Pesahwar the wholesale price of wheat (Source: Government of Pakistan) in October/November was PKR 1,000. It was PKR 1,080 in December. It is a very reasonable increase. The price of wheat in international markets in September was 32-48% higher than its price in July (prior to the surge in its price). There was 10% decrease in its price in October. The price in December is 41-53% higher than in July.

Given above and the bleak prospects of 2011 cereal harvest, the prices of wheat and wheat flour are quite likely to rise in the coming months.

##### **4.3. Prices of other Agricultural Commodities<sup>7</sup>**

National average prices of beef and mutton in the 2<sup>nd</sup> week of December were Afs 180/kg and 255/kg. The price of chicken was Afs 106/kg in November 2010, which was 3.6% higher than its price in October. The average cost of agricultural labor in November (Afs 272/person/day) is 0.5% higher than in October. The cost is 27% higher than the last year. In November the price of best quality, imported urea was Afs 17.6/kg (up 1.3% compared to October) and DAP Afs 43.6/kg (up 16% compared to October). Among agricultural inputs, DAP became substantially dearer in the reporting period. Compared to November last year, it was costlier by 38%.

---

<sup>4</sup> Details are available in Agricultural Commodity Price Bulleting released by MAIL on December, 20<sup>th</sup>.

<sup>5</sup> Consumer Price Index (CPI) is an index of the price of consumer goods and services.

<sup>6</sup> See Annex 8 also

<sup>7</sup> See Annex 8 also

Annex 1: Rainfall amount in November 1009 to November 2010 and Long-Term Average (LTA) at various locations in Afghanistan

Region	Province	Station	Nov LTA	Dec LTA	Jan LTA	Feb LTA	Mar LTA	Apr LTA	May LTA	Jun LTA	Jul LTA	Nov 09 Actual	Dec 09 Actual	Jan 10 Actual	Feb 10 Actual	Mar 10 Actual	Apr 10 Actual	May 10 Actual	Jun 10 Actual	Jul 10 Actual	Aug 10 Actual	Sep 10 Actual	Oct 10 Actual	Nov 10 Actual	% LTA Nov 09	% LTA Dec 09	% LTA Jan 10	% LTA Feb 10	% LTA Mar 10	% LTA Apr 10	% LTA May 10	% LTA Jun 10	% LTA Jul 10
North	Faryab	Maimana	28.0	35.0	47.9	55.8	83.9	65.0	29.8	1.3	0.7	78.0	56.0	14.0	39.0	81.0	31.0	0.0	0.0	0.0	0.0	0.0	0.0	3.0	279	160	29	70	97	48	0	0	0
North	Juzjan	Sheberghan	15.0	29.0	34.8	26.5	41.3	37.1	10.0	0.0	0.0	33.2	36.3	17.2	84.7	32.9	18.5	26.5	3.0	0.0	0.0	0.4	0.0	4.0	221	125	49	320	80	50	265	>100	100
North	Sari Pul	Sari Pul	0.0	0.0	89.0	18.3	10.9	6.1	15.2	0.0	0.0	34.5	13.5	15.0	62.0	36.0	19.0	29.0	0.0	0.0	0.0	0.0	3.5	>100	>100	17	339	330	311	191	100	100	
North	Balkh	Mazar	11.0	21.0	28.9	37.9	46.8	37.6	12.7	0.0	0.0	40.0	69.0	6.0	107.0	45.0	36.0	53.0	10.0	5.0	0.0	0.0	0.0	0.0	364	329	21	282	96	96	417	>100	>100
North East	Baghlan	Baghlan	24.0	23.0	41.3	41.8	84.1	75.2	23.3	0.3	0.0	54.6	39.3	5.0	40.0	38.0	44.2	56.0	10.6	0.0	0.0	0.0	0.0	0.0	228	171	12	96	45	59	240	3533	100
North East	Kunduz	Kunduz	26.0	36.0	50.5	56.9	69.2	40.7	13.6	0.4	0.0	25.5	51.9	6.2	66.9	41.7	31.3	59.5	34.8	5.0	0.0	0.0	3.5	0.0	98	144	12	118	60	77	438	8700	>100
North East	Takhar	Taluqan	0.0	0.0	77.8	78.1	131.1	119.3	65.1	6.5	0.1	76.0	40.0	8.0	99.5	46.5	55.5	109.0	50.0	0.0	0.0	0.0	3.0	0.0	>100	>100	10	127	35	47	167	769	0
North East	Badakshan	Faiz Abad	29.0	32.0	45.5	63.0	98.2	99.2	81.4	73.0	6.0	67.5	51.5	34.0	138.0	105.5	52.0	71.7	61.0	0.0	0.0	15.0	0.0	0.0	233	161	75	219	107	52	88	84	0
West	Herat	Herat	9.0	9.0	49.6	39.0	49.9	33.6	6.5	0.0	0.0	3.0	35.6	10.0	30.0	53.0	5.0	0.0	0.0	0.0	0.0	0.0	5.0	0.0	33	396	20	77	106	15	0	100	100
West	Farah	Farah	3.0	3.0	22.2	24.8	25.3	10.1	2.3	0.0	0.0	1.5	23.5	6.0	27.5	3.0	7.0	1.5	0.0	0.0	0.0	0.0	0.0	0.0	50	783	27	111	12	69	65	100	100
Central	Kabul	Darul Aman	1.4	0.0	40.5	71.5	64.3	56.2	17.1	1.8	1.4	25.2	11.5	34.4	86.6	27.8	15.7	52.3	7.0	13.8	23.5	9.4	0.0	0.0	1800	>100	85	121	43	28	306	389	986
Central	Kabul	Kabul	11.0	25.0	33.1	58.6	63.9	83.2	24.3	1.2	5.2	31.2	12.0	28.8	76.0	27.6	33.5	53.1	7.5	4.4	20.0	6.2	0.0	0.0	284	48	87	130	43	40	219	625	85
Central	Kabul	Kariz Mir	27.0	30.0	46.9	68.8	91.7	96.8	29.4	3.2	5.7	22.0	25.0	14.0	93.0	21.0	71.0	38.0	10.0	15.0	17.0	7.0	0.0	0.0	81	83	30	135	23	73	129	313	263
Central	Kabul	Paghman	43.0	52.0	62.1	68.5	80.9	83.1	27.6	2.4	8.3	55.0	23.0	80.0	138.0	26.0	65.0	56.0	30.0	11.0	36.0	27.0	0.0	0.0	128	44	129	201	32	78	203	1250	133
Central	Kabul	Sarobi	15.0	29.0	44.4	54.9	46.5	55.1	14.4	0.9	0.5	16.0	5.0	11.0	71.5	24.5	8.2	56.9	2.5	17.5	10.5	4.6	0.0	23.0	107	17	25	130	53	15	395	278	3500
Central	Parwan	Jabul Seraj	22.0	36.0	65.3	88.2	98.3	113.6	32.2	1.8	1.9	47.5	86.0	46.0	97.0	50.0	16.0	0.0	0.0	8.0	0.0	6.0	0.0	0.0	216	239	70	110	51	14	0	0	421
South	Paktya	Gardiz	11.0	11.0	40.4	70.8	65.9	74.2	17.9	4.3	14.6	16.0	15.0	26.0	143.0	51.0	19.5	73.7	14.7	55.1	112.2	0.0	8.7	0.0	145	136	64	202	77	26	412	342	377
South	Ghazni	Ghazni	11.0	11.0	37.9	36.4	42.4	47.4	17.8	2.2	15.7	16.0	6.5	32.0	38.0	20.0	0.0	43.0	0.0	35.0	28.0	0.0	5.0	0.0	145	59	84	104	47	0	242	0	223
East	Nangharhar	Ghazniabad	0.0	4.6	12.9	25.1	37.7	56.3	12.1	0.0	2.0	3.0	0.0	27.0	28.0	0.0	43.0	56.0	17.0	66.0	17.0	51.0	0.0	0.0	>100	0	209	112	0	76	463	>100	3300
East	Nangharhar	Jalalabad	8.0	16.0	17.3	24.8	63.2	33.0	21.7	0.9	6.9	0.0	0.0	15.5	27.5	4.0	14.5	29.0	3.0	81.0	20.0	16.0	0.0	13.0	0	0	90	111	6	44	134	333	1174
South West	Kandahar	Kandahar	6.0	6.0	49.1	35.1	26.3	13.6	1.8	0.0	3.2	0.0	73.5	15.0	63.0	5.5	1.5	7.5	0.0	0.0	0.0	0.0	0.0	0.0	0	1225	31	179	21	11	417	100	0

Sources:  
USGS Project  
Consolidated table prepared at MAIL

**Annex 2: Wheat seed produced by the FAO seed project (2003-2009)**

SN	Variety	Breeder Seed (kg)								Foundation Seed (tonnes)								Certified Seed (tonnes)							
		2003	2004	2005	2006	2007	2008	2009	Total	2003	2004	2005	2006	2007	2008	2009	Total	2003	2004	2005	2006	2007	2008	2009	Total
1	MH-96	0.100	2.440	0.341	0.404	--	--	--	<b>3.285</b>	2.00	44.00	8.46	--	10.88	--	--	<b>65.34</b>	35	800	328	--	--	173	80	<b>1,416</b>
2	Herat-99	0.775	3.409	1.500	1.775	3.525	6.607	8.301	<b>25.892</b>	18.00	64.00	35.50	14.65	14.76	54.33	210.05	<b>411.291</b>	322	1,175	978	450	358	445	570	<b>4,298</b>
3	Balkh-66	0.200	--	--	0.315	--	--	--	<b>0.515</b>	4.50	--	--	2.40	9.07	--	--	<b>15.974</b>	81	3	--	60	9	12	0	<b>165</b>
4	Mazar 99	1.850	--	0.748	1.200	1.514	3.492	7.278	<b>16.082</b>	44.00	--	17.00	31.05	26.03	33.71	156.01	<b>307.799</b>	790	5	533	942	815	1,321	984	<b>5,390</b>
5	Gul 96	1.825	0.118	0.783	0.590	0.430	6.452	5.395	<b>15.593</b>	42.50	4.00	19.00	17.56	14.14	2.91	171.74	<b>271.853</b>	782	83	575	1,150	193	348	300	<b>3,431</b>
6	Ghori-96	0.800	--	0.850	0.540	0.554	11.743	8.205	<b>22.692</b>	18.50	--	18.99	39.06	6.59	9.02	122.35	<b>214.503</b>	330	3	580	733	1,017	1,033	1,167	<b>4,863</b>
7	Lalmi-1	2.000	--	0.950	0.340	1.700	--	--	<b>4.990</b>	4.50	--	20.00	6.40	2.68	10.43	--	<b>44.007</b>	81	5	605	620	128	235	200	<b>1,874</b>
8	Lalmi-2	0.900	0.378	0.753	0.797	1.035	4.631	5.900	<b>14.394</b>	47.00	11.00	18.50	48.64	21.20	23.39	111.79	<b>281.524</b>	847	238	569	1,279	767	881	955	<b>5,536</b>
9	Lalmi-3	1.500	0.370	0.450	1.114	3.500	6.160	4.718	<b>17.812</b>	20.00	11.00	8.40	20.25	33.67	40.62	100.15	<b>234.090</b>	358	235	326	504	242	460	882	<b>3,007</b>
10	Diyma-96	0.200	2.193	0.318	0.646	1.958	0.350	0.890	<b>6.555</b>	35.00	--	8.80	20.88	12.70	29.25	2.56	<b>109.190</b>	629	8	336	521	236	154	100	<b>1,984</b>
11	Sn'b	--	--	0.308	0.348	0.730	1.405	1.521	<b>4.312</b>	4.50	--	7.00	8.05	5.38	9.18	33.41	<b>67.513</b>	81	--	293	503	13	42	160	<b>1,092</b>
12	Cham-6	--	0.050	0.371	0.221	0.880	0.485	--	<b>2.007</b>	4.00	--	8.00	27.05	6.61	4.80	--	<b>50.451</b>	119	--	317	--	210	99	123	<b>868</b>
13	Rona-96	--	--	0.200	0.857	2.721	0.536	--	<b>4.314</b>	--	--	4.80	5.40	14.73	33.64	--	<b>58.565</b>	--	--	240	--	85	423	453	<b>1,201</b>
14	Pamir-94	0.800	--	0.900	0.747	0.733	2.645	0.691	<b>6.516</b>	18.50	--	18.20	7.05	19.31	11.45	31.76	<b>106.273</b>	318	3	617	194	145	490	640	<b>2,407</b>
15	Roshan-96	1.950	1.832	0.600	0.389	0.260	3.340	3.109	<b>11.480</b>	44.00	39.00	14.50	13.30	7.75	0.69	--	<b>119.238</b>	736	880	473	178	309	1,505	881	<b>4,962</b>
16	Amu-99	1.350	1.413	0.428	0.848	0.587	3.635	3.764	<b>12.025</b>	30.50	29.00	9.50	26.95	12.30	10.82	106.70	<b>225.770</b>	514	666	357	689	1,474	1,429	402	<b>5,531</b>
17	Parva-2	0.400	--	0.200	0.950	2.782	1.618	2.240	<b>8.190</b>	9.50	--	34.00	32.87	15.82	26.39	18.80	<b>137.380</b>	159	3	245	851	289	311	376	<b>2,234</b>
18	Solh-2	0.600	0.315	0.983	0.569	0.202	2.915	4.961	<b>10.545</b>	14.00	9.00	24.00	15.97	14.41	27.49	43.30	<b>148.167</b>	236	200	701	--	285	584	470	<b>2,476</b>
19	PBW-154	0.800	0.180	0.988	1.692	11.470	10.000	8.657	<b>33.787</b>	18.00	5.00	23.00	38.53	35.50	134.00	234.48	<b>488.510</b>	303	100	677	--	534	1,017	2,734	<b>5,365</b>
20	HUW-234	--	--	0.368	0.348	--	--	--	<b>0.716</b>	--	--	8.00	1.00	11.70	--	--	<b>20.700</b>	--	--	317	--	16	105	--	<b>438</b>
21	HD-2285	--	--	0.130	0.320	4.500	0.648	1.579	<b>7.177</b>	--	--	3.50	1.00	6.78	65.84	34.40	<b>111.515</b>	--	--	119	27	42	411	1,432	<b>2,031</b>
22	Bakhtawar-92	0.550	3.002	1.263	1.799	0.790	3.940	4.424	<b>15.768</b>	12.00	65.00	22.85	16.61	33.00	--	42.50	<b>191.960</b>	200	1,428	668	426	339	455	19	<b>3,535</b>
23	Mayson	--	--	--	0.242	--	--	--	<b>0.242</b>	--	--	--	--	--	--	--	<b>0.000</b>	--	--	--	--	--	--	--	<b>0</b>
24	Kouz/AA/Kouz	--	--	--	0.350	--	--	--	<b>0.350</b>	--	--	--	--	--	--	--	<b>0.000</b>	--	--	--	--	--	--	--	<b>0</b>
25	FDLu/NG8695	--	--	--	0.225	--	--	--	<b>0.225</b>	--	--	--	--	--	--	--	<b>0.000</b>	--	--	--	--	--	--	--	<b>0</b>
26	Pastor	--	--	0.728	0.600	0.160	--	--	<b>1.488</b>	--	--	--	--	6.00	--	--	<b>6.000</b>	--	--	--	--	--	65	--	<b>65</b>
27	Ghazna-97	0.250	--	--	--	0.170	--	--	<b>0.420</b>	--	--	--	5.33	--	3.10	--	<b>8.430</b>	--	--	--	145	10	11	20	<b>186</b>
28	/4/Clif	--	--	--	0.150	--	--	--	<b>0.150</b>	--	--	--	--	--	--	--	<b>0.000</b>	--	--	--	--	--	--	--	<b>0</b>
29	UREs/PRC	--	--	0.130	0.224	--	--	--	<b>0.354</b>	--	--	--	--	--	--	--	<b>0.000</b>	--	--	--	--	--	--	--	<b>0</b>
30	IRENA/Weaver	--	--	0.230	--	--	--	1.900	<b>2.130</b>	--	--	--	--	3.01	--	--	<b>3.010</b>	--	--	--	--	--	25	--	<b>25</b>
31	WEBBLL-1	--	--	0.130	0.200	--	--	--	<b>0.330</b>	--	--	--	--	--	--	--	<b>0.000</b>	--	--	--	--	--	--	--	<b>0</b>
32	Takhar-96	0.150	--	--	--	--	--	--	<b>0.150</b>	--	--	--	--	--	--	--	<b>0.000</b>	4	--	--	111	--	--	--	<b>115</b>
33	Dorkhshan-08	--	--	--	--	--	--	8.487	<b>8.487</b>	--	--	--	--	--	--	--	<b>0.000</b>	--	--	--	--	--	--	--	<b>0</b>
34	Shesham Bagh-	--	--	--	--	--	--	4.980	<b>4.980</b>	--	--	--	--	--	--	--	<b>0.000</b>	4	--	--	111	--	--	--	<b>115</b>
<b>Total</b>		<b>17.000</b>	<b>15.700</b>	<b>14.650</b>	<b>18.800</b>	<b>40.201</b>	<b>70.602</b>	<b>87.000</b>	<b>263.953</b>	<b>391.00</b>	<b>281.00</b>	<b>332.00</b>	<b>400.00</b>	<b>344.00</b>	<b>531.05</b>	<b>1420.00</b>	<b>2279.07</b>	<b>6,929</b>	<b>5,835</b>	<b>9,854</b>	<b>9,494</b>	<b>7,516</b>	<b>12,034</b>	<b>12,948</b>	<b>64,610</b>

Source: FAO Seed Project (GCP/AFG/018/045/EC)

**Annex 3: Area and Production of Wheat in 2010 by province (Final Estimates)**

REGION/ Province	Irrigated Wheat			Rainfed Wheat			Total Wheat		
	Area	Yield	Production	Area	Yield	Production	Area	Yield	Production
	('000 ha)	(t/ha)	('000 tons)	('000 ha)	(t/ha)	('000 tons)	('000 ha)	(t/ha)	('000 tons)
<b>NORTH</b>	<b>276</b>	<b>2.50</b>	<b>690</b>	<b>540</b>	<b>1.11</b>	<b>599</b>	<b>816</b>	<b>1.58</b>	<b>1,289</b>
Faryab	77	2.40	185	175	1.23	215	252	1.59	400
Juzjan	50	2.38	119	76	1.33	101	126	1.75	220
Sar-i-Pul	39	2.53	99	90	1.00	90	129	1.47	189
Balkh*	95	2.67	254	99	1.00	99	194	1.82	353
Samangan	15	2.20	33	100	0.94	94	115	1.10	127
<b>NORTH-EAST</b>	<b>283</b>	<b>2.48</b>	<b>701</b>	<b>251</b>	<b>1.13</b>	<b>284</b>	<b>534</b>	<b>1.84</b>	<b>985</b>
Bughlan	58	2.20	128	49	1.01	49	107	1.65	177
Kunduz*	135	2.51	339	35	1.20	42	170	2.24	381
Takhar	52	2.99	155	98	1.30	127	150	1.88	282
Badakhshan	38	2.07	79	69	0.96	66	107	1.36	145
<b>WEST</b>	<b>133</b>	<b>2.37</b>	<b>315</b>	<b>161</b>	<b>0.91</b>	<b>147</b>	<b>294</b>	<b>1.57</b>	<b>462</b>
Herat*	83	2.51	208	67	1.11	74	150	1.88	282
Farah	25	2.54	64				25	2.56	64
Badghis*	25	1.73	43	94	0.78	73	119	0.97	116
<b>WEST-CENTRAL</b>	<b>51</b>	<b>2.57</b>	<b>131</b>	<b>54</b>	<b>1.04</b>	<b>56</b>	<b>105</b>	<b>1.78</b>	<b>187</b>
Ghor	26	2.70	70	45	1.04	47	71	1.65	117
Bamyan	25	2.45	61	9	1.05	9	34	2.06	70
<b>CENTRAL</b>	<b>124</b>	<b>3.15</b>	<b>391</b>	<b>17</b>	<b>1.12</b>	<b>19</b>	<b>141</b>	<b>2.91</b>	<b>410</b>
Kabul	33	3.12	103	2	0.74	1	35	2.97	104
Parwan	33	3.49	115	4	1.19	5	37	3.24	120
Panjsher	7	3.02	21	1	1.04	1	8	2.75	22
Kapisa	16	2.87	46	1	0.71	1	17	2.76	47
Logar	21	2.66	56	8	1.28	10	29	2.28	66
Wardak	14	3.58	50	1	1.20	1	15	3.40	51
<b>SOUTH</b>	<b>117</b>	<b>2.97</b>	<b>348</b>	<b>4</b>	<b>1.00</b>	<b>4</b>	<b>121</b>	<b>2.91</b>	<b>352</b>
Paktya	21	2.50	53	1	0.74	1	22	2.45	54
Paktika	23	3.00	69	1	0.74	1	24	2.92	70
Khost	14	3.10	43	1	0.54	1	15	2.93	44
Ghazni	59	3.11	183	1	0.62	1	60	3.07	184
<b>EAST</b>	<b>113</b>	<b>2.53</b>	<b>286</b>	<b>7</b>	<b>0.43</b>	<b>3</b>	<b>120</b>	<b>2.41</b>	<b>289</b>
Nangarhar*	79	2.55	201				79	2.54	201
Laghman*	13	2.61	34				13	2.62	34
Kunarha*	15	2.50	38	6	0.52	3	21	1.95	41
Nooristan	6	2.14	13	1	0.44		7	1.86	13
<b>SOUTH-WEST</b>	<b>206</b>	<b>2.58</b>	<b>532</b>	<b>17</b>	<b>0.88</b>	<b>15</b>	<b>223</b>	<b>2.45</b>	<b>547</b>
Kandahar	58	2.96	172	1	0.36		59	2.92	172
Helmand	72	2.61	188				72	2.61	188
Zabul	20	2.43	49	11	1.07	12	31	1.97	61
Nimroz	18	1.90	34	1	0.35		19	1.79	34
Uruzgan	21	2.42	51	1	0.53	1	22	2.36	52
Daikunde	17	2.25	38	3	0.75	2	20	2.00	40
<b>TOTAL</b>	<b>1,303</b>	<b>2.60</b>	<b>3,394</b>	<b>1,051</b>	<b>1.07</b>	<b>1,127</b>	<b>2,354</b>	<b>1.92</b>	<b>4,521</b>

Annex 4: Wheat Balance in 2010 by Province (Final estimates)

REGION/ Province	Settled population in 2010 ( <sup>'000 no.</sup> )	Irrigated wheat area forecast 2011 harvest ( <sup>'000 ha.</sup> )	Rainfed wheat area forecast 2011 harvest ( <sup>'000 ha.</sup> )	Production 2010 ( <sup>'000 tons</sup> )	Requirement 2010			Surplus or Deficit 2010 ( <sup>'000 tons</sup> )
					Human	Seed	Post harvest	
					consumption ( <sup>'000 tons</sup> )	( <sup>'000 tons</sup> )	Losses ( <sup>'000 tons</sup> )	
<b>NORTH</b>	<b>3,474.4</b>	<b>276</b>	<b>540</b>	<b>1,289</b>	<b>555.9</b>	<b>93.1</b>	<b>193.5</b>	<b>446.5</b>
Faryab	915.8	77	175	400	146.5	28.0	60.0	165.5
Juzjan	494.2	50	76	220	79.1	15.1	33.0	92.8
Sar-i-Pul	514.1	39	90	189	82.3	14.3	28.4	64.0
Balkh	1,194.0	95	99	353	191.0	24.8	53.0	84.2
Samangan	356.3	15	100	127	57.0	10.9	19.1	40.0
<b>NORTH-EAST</b>	<b>3,527.9</b>	<b>283</b>	<b>251</b>	<b>985</b>	<b>564.5</b>	<b>70.3</b>	<b>147.9</b>	<b>202.3</b>
Bughlan	833.3	58	49	177	133.3	14.2	26.6	2.9
Kunduz	917.9	135	35	381	146.9	26.5	57.2	150.4
Takhar	901.9	52	98	282	144.3	17.2	42.3	78.2
Badakhshan	874.8	38	69	145	140.0	12.4	21.8	-29.2
<b>WEST</b>	<b>2,632.8</b>	<b>133</b>	<b>161</b>	<b>462</b>	<b>421.2</b>	<b>36.7</b>	<b>69.3</b>	<b>-65.2</b>
Herat	1,710.1	83	67	282	273.6	20.1	42.3	-54.0
Farah	466.3	25	0	64	74.6	4.4	9.6	-24.6
Badghis	456.4	25	94	116	73.0	12.2	17.4	13.4
<b>WEST-CENTRAL</b>	<b>1,047.4</b>	<b>51</b>	<b>54</b>	<b>187</b>	<b>167.6</b>	<b>13.4</b>	<b>28.1</b>	<b>-22.1</b>
Ghor	635.7	26	45	117	101.7	8.3	17.6	-10.6
Bamyan	411.7	25	9	70	65.9	5.1	10.5	-11.5
<b>CENTRAL</b>	<b>5,759.4</b>	<b>124</b>	<b>17</b>	<b>410</b>	<b>921.4</b>	<b>23.0</b>	<b>61.6</b>	<b>-596.0</b>
Kabul	3,691.4	33	2	104	590.6	5.9	15.6	-508.1
Parwan	610.3	33	4	120	97.6	6.1	18.0	-1.7
Panjsher	141.4	7	1	22	22.6	1.3	3.3	-5.2
Kapisa	406.2	16	1	47	65.0	2.9	7.1	-28.0
Logar	360.9	21	8	66	57.7	4.3	9.9	-5.9
Wardak	549.2	14	1	51	87.9	2.5	7.7	-47.1
<b>SOUTH</b>	<b>2,567.3</b>	<b>117</b>	<b>4</b>	<b>352</b>	<b>410.7</b>	<b>20.8</b>	<b>52.8</b>	<b>-132.3</b>
Paktya	507.8	21	1	54	81.2	3.8	8.1	-39.1
Paktika	400.5	23	1	70	64.1	4.1	10.5	-8.7
Khost	528.9	14	1	44	84.6	2.5	6.6	-49.7
Ghazni	1,130.1	59	1	184	180.8	10.4	27.6	-34.8
<b>EAST</b>	<b>2,345.2</b>	<b>113</b>	<b>7</b>	<b>289</b>	<b>375.2</b>	<b>18.4</b>	<b>43.5</b>	<b>-148.1</b>
Nangarhar	1,383.9	68	0	201	221.4	11.9	30.2	-62.5
Laghman	410.3	13	0	34	65.6	2.3	5.1	-39.0
Kunarha	414.7	15	6	41	66.4	3.1	6.2	-34.7
Nooristan	136.3	6	1	13	21.8	1.1	2.0	-11.9
<b>SOUTH-WEST</b>	<b>3,131.2</b>	<b>206</b>	<b>17</b>	<b>547</b>	<b>501.0</b>	<b>37.4</b>	<b>82.1</b>	<b>-73.5</b>
Kandahar	1,103.4	58	1	172	176.5	10.2	25.8	-40.5
Helmand	850.2	72	0	188	136.0	12.6	28.2	11.2
Zabul	279.8	20	11	61	44.8	4.4	9.2	2.6
Nimroz	151.1	18	1	34	24.2	3.2	5.1	1.5
Uruzgan	322.6	21	1	52	51.6	3.8	7.8	-11.2
Daikunde	424.1	17	3	40	67.9	3.2	6.0	-37.1
<b>Sub-total for settled</b>	<b>24,485.6</b>	<b>1303</b>	<b>1,051</b>	<b>4521</b>	<b>3,917.5</b>	<b>313.1</b>	<b>678.8</b>	<b>-388.4</b>
<b>Sub-total Nomads</b>	<b>1,735.0</b>	<b>0</b>	<b>0</b>	<b>0</b>	<b>277.6</b>	<b>--</b>	<b>--</b>	<b>-277.6</b>
<b>Sub-total returnees</b>	<b>278.5</b>	<b>0</b>	<b>0</b>	<b>0</b>	<b>44.6</b>	<b>--</b>	<b>--</b>	<b>-44.6</b>
<b>Total all consumers</b>	<b>26,499.1</b>	<b>1303</b>	<b>1,051.0</b>	<b>4,521.0</b>	<b>4,239.7</b>	<b>313.1</b>	<b>678.8</b>	<b>-710.6</b>

**Sources:**

Settled population in 2010: Central Statistics Organization

Nomads in 2010: Calculated from the May 09 APR figure, using CSO's annual population growth-rate of 2.03%

Returnees: UNHCR/CSO

All other data: MAIL

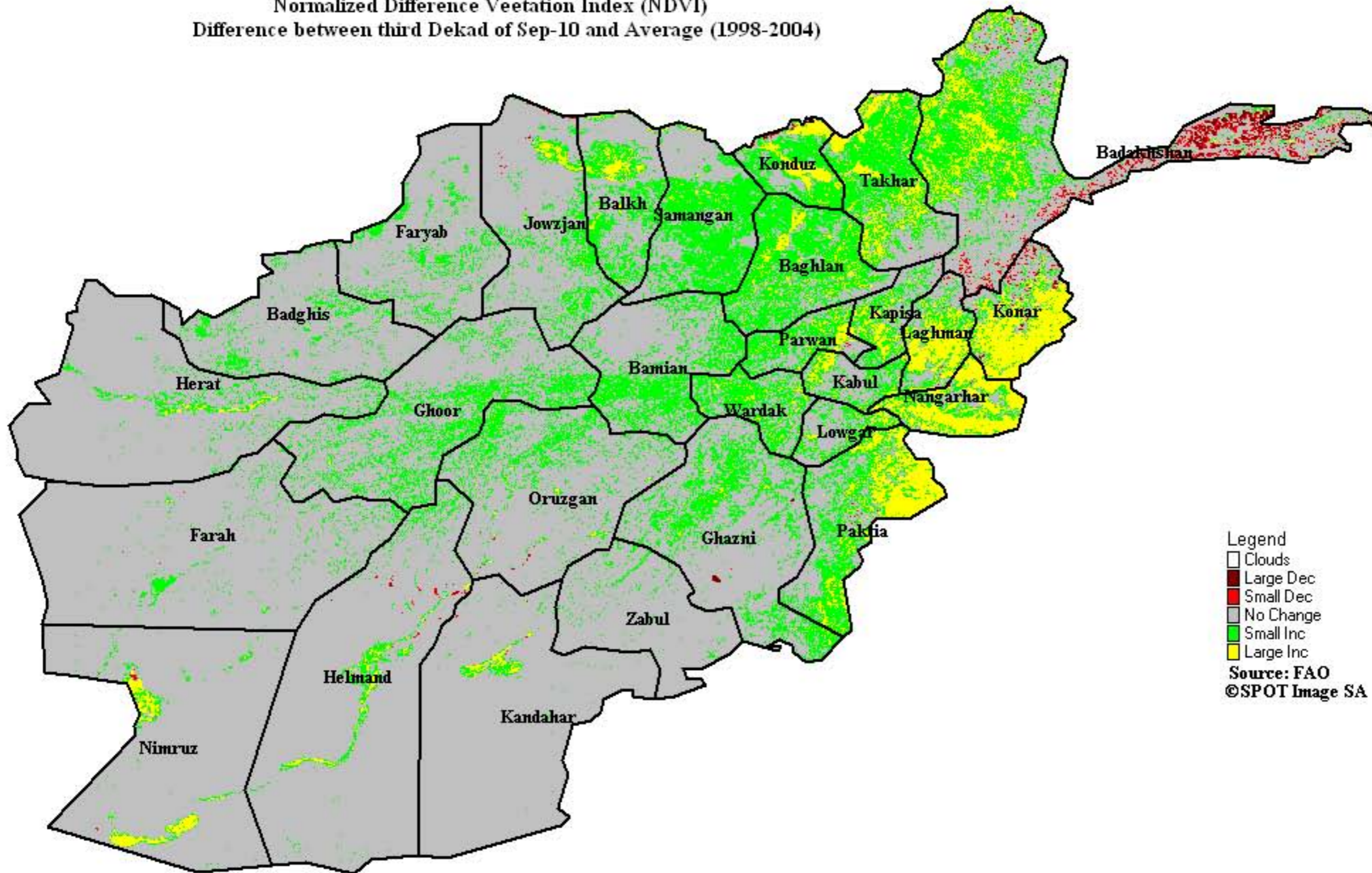
**Annex 5: Production and Requirements of cereals in 2010  
(Final Estimates)**

Crop	Consumption units (‘000 no.)	Area (‘000 ha)	Seed-rate (kg/ha)	Required for human consumption (kg/person)	Required for				Total required (‘000 MT)	Total production (‘000 MT)	Surplus/ Deficit (‘000 MT)	
					Food (‘000 MT)	Seed (‘000 MT)	Feed (‘000 MT)	Loss (‘000 MT)				
					(5)=(1)x(4)	(6)=(2)x(3)	(7)	(8)				(9)=(5)+(6)+(7)+(8)
(1)	(2)	(3)	(4)	(5)	(6)	(7)	(8)	(9)	(10)	(11)		
Irrigated wheat	26,499.1 (See Annex 3)	1,303	175			228	--	509		3,394		
Rainfed wheat		1,051	83			85	--	169		1,127		
<b>All wheat</b>		<b>2,354</b>	<b>126</b>	<b>160</b>		<b>4,240</b>	<b>313</b>	<b>0</b>	<b>678</b>	<b>5,231</b>	<b>4,521</b>	<b>-710</b>
Milled rice		208	105	17		450	22	0	34	506	481	-25
Maize		183	60	2		53	11	178	43	285	285	0
Barley	212	110	1		26	23	315	64	428	428	0	
<b>All cereals</b>		<b>2,957</b>		<b>180</b>	<b>4,769</b>	<b>369</b>	<b>493</b>	<b>819</b>	<b>6,450</b>	<b>5,715</b>	<b>-735</b>	

Extraction-rate from paddy to rice: 67%

Losses: 15% of production for wheat, maize and barley; 7% for milled rice

Normalized Difference Vegetation Index (NDVI)  
Difference between third Dekad of Sep-10 and Average (1998-2004)



Legend  
☐ Clouds  
■ Large Dec  
■ Small Dec  
■ No Change  
■ Small Inc  
■ Large Inc  
Source: FAO  
©SPOT Image SA



## Annex 8: Domestic and International Prices of Agricultural Commodities

### a) Retail market prices of agricultural commodity (Afs/Kg.) in November 2010

Commodity	Region	Reporting month	Previous Month	Last year same month	% change on	
					Last month	Last year
		(i.e. Nov 10)	(Oct 10)	(Nov 09)	(Oct 10)	(Nov 09)
Wheat	North	13.0	12.5	14.2	4.0	-8.5
Wheat	North-East	14.5	14.5	15.5	0.0	-6.5
Wheat	West	12.7	12.0	14.3	5.8	-11.6
Wheat	West-Central	13.5	13.0	17.0	3.8	-20.6
Wheat	Central	17.1	16.8	17.2	1.5	-0.5
Wheat	South	17.5	17.3	17.8	1.3	-1.4
Wheat	East	17.4	17.4	18.5	0.0	-6.1
Wheat	South-West	17.8	17.6	16.8	1.6	5.9
<b>Wheat</b>	<b>Overall</b>	<b>15.8</b>	<b>15.5</b>	<b>16.4</b>	<b>1.8</b>	<b>-3.9</b>
<b>Beef</b>	<b>Overall</b>	<b>176.5</b>	<b>176.2</b>	<b>150.9</b>	<b>0.2</b>	<b>16.9</b>
<b>Mutton</b>	<b>Overall</b>	<b>257.4</b>	<b>252.7</b>	<b>200.7</b>	<b>1.8</b>	<b>28.2</b>
<b>Chicken</b>	<b>Overall</b>	<b>106.0</b>	<b>102.4</b>	<b>111.1</b>	<b>3.6</b>	<b>-4.5</b>
<b>Agri. Labor</b>	<b>Overall (per day)</b>	<b>272.3</b>	<b>271.0</b>	<b>215.2</b>	<b>0.5</b>	<b>26.5</b>
<b>Urea</b>	<b>Overall</b>	<b>17.6</b>	<b>17.4</b>	<b>16.9</b>	<b>1.3</b>	<b>4.2</b>
<b>DAP</b>	<b>Overall</b>	<b>43.6</b>	<b>37.6</b>	<b>31.6</b>	<b>15.9</b>	<b>37.8</b>

### b) Price (Afs/kg) of wheat, beef and mutton in 2<sup>nd</sup> week of December 2010

Region	Wheat	Beef	Mutton
North	15.2	198.0	250.0
North-East	15.5	180.0	247.5
West	15.0	186.7	283.3
West-Central	14.5	180.0	220.0
Central	17.1	188.3	265.0
South	17.4	162.8	263.3
East	17.9	168.3	233.8
South-West	18.2	174.8	260.0
<b>Overall</b>	<b>16.6</b>	<b>180.4</b>	<b>254.9</b>

### c) Wholesale (W) and Retail (R) Price of wheat in Pakistan in December (Rs.)

COMMODITY	Type	Qty	Karachi	H.Abad	Sukkur	Multan	Fsl.Abad	Lahore	R.Pindi	Peshawar	Quetta
Wheat	(W)	40 Kg	1,060	1,040		1,040	1,050	1,100	1,100	1,000	.
	(R)	1 Kg		27		31	28	30			
Wheat Flour	(W)	40 Kg	1,200	1,205	1,159	1,120	1,100	1,140	1,180	1,180	1,260
	(R)	1 Kg	33	31	31	33	29	31	32	33	34

### d) Price of wheat in the international market, 2008-2010

Description	Wheat fob prices (US\$/tonne)		
	Argentina up river	US Hard Red Winter	US Soft Red Winter
Average price in 2008	288.80	344.42	268.17
Average price in 2009	218.75	235.58	185.67
Average price in 2010	251.58	239.92	226.92
<b>% change in price in 2010 on 2009</b>	15.0	1.8	22.2